

The following information is based on 70mm Stud at 600mm centres with 72mm track. The track legs may vary in length depending on deflection allowance and partition height. Install deep track for heights over 4200mm. Extra deep track for partitions exceeding 8000mm.



Libra Ref	Type	Board	Width/mm	EN520 Type	Insulation	Fire Resistance	Acoustics RwdB	Max height	Duty Rating
LS70-001	1	1 x 12.5mm	97	A	None	30	35	3600	Medium
LS70-002	2	1 x 12.5mm	97	A	25mm	30	42	3600	Medium
LS70-003	3	1 x 12.5mm	97	A	50mm	30	44	3600	Medium
LS70-004	4	2 x 12.5mm	122	A	None	60	45	4600	Severe
LS70-005	5	2 x 12.5mm	122	A	25mm	60	50	4600	Severe
LS70-006	6	2 x 12.5mm	122	A	50mm	60	51	4600	Severe
LS70-007	1	1 x 15mm	102	A	None	30	35	3800	Heavy
LS70-008	2	1 x 15mm	102	A	25mm	30	42	3800	Heavy
LS70-009	3	1 x 15mm	102	A	50mm	30	44	3800	Heavy
LS70-010	4	2 x 15mm	132	A	None	60	45	4900	Severe
LS70-011	5	2 x 15mm	132	A	25mm	60	50	4900	Severe
LS70-012	6	2 x 15mm	132	A	50mm	60	52	4900	Severe
LS70-013	1	1 x 12.5mm	97	D	None	30	40	3600	Medium
LS70-014	2	1 x 12.5mm	97	D	25mm	30	43	3600	Medium
LS70-015	3	1 x 12.5mm	97	D	50mm	30	46	3600	Medium
LS70-016	4	2 x 12.5mm	122	D	None	60	48	4600	Severe
LS70-017	5	2 x 12.5mm	122	D	25mm	60	51	4600	Severe
LS70-018	6	2 x 12.5mm	122	D	50mm	60	52	4600	Severe
LS70-019	1	1 x 15mm	102	D	None	30	41	3800	Heavy
LS70-020	2	1 x 15mm	102	D	25mm	30	45	3800	Heavy
LS70-021	3	1 x 15mm	102	D	50mm	30	48	3800	Heavy
LS70-022	4	2 x 15mm	132	D	None	90	51	4900	Severe
LS70-023	5	2 x 15mm	132	D	25mm	90	52	4900	Severe
LS70-024	6	2 x 15mm	132	D	50mm	90	54	4900	Severe
LS70-025	1	1 x 12.5mm	97	F	None	30	37	3600	Medium
LS70-026	2	1 x 12.5mm	97	F	25mm	30	41	3600	Medium
LS70-027	3	1 x 12.5mm	97	F	50mm	30	43	3600	Medium
LS70-028	4	2 x 12.5mm	122	F	None	120	47	4600	Severe
LS70-029	5	2 x 12.5mm	122	F	25mm	120	51	4600	Severe
LS70-030	6	2 x 12.5mm	122	F	50mm	120	52	4600	Severe
LS70-031	1	1 x 15mm	102	F	None	60	39	3800	Heavy
LS70-032	2	1 x 15mm	102	F	25mm	60	41	3800	Heavy
LS70-033	3	1 x 15mm	102	F	50mm	60	45	3800	Heavy
LS70-034	4	2 x 15mm	132	F	None	120	48	4900	Severe
LS70-035	5	2 x 15mm	132	F	25mm	120	51	4900	Severe
LS70-036	6	2 x 15mm	132	F	50mm	120	53	4900	Severe

A - Standard Wallboard / D - Acoustic / F - Fire

Partition maximum heights based on a limiting deflection of L/240 at 200pa

We cannot take any responsibility for the overall design and we would advise that specialist advice is sought at an early stage of design. The following information is based on test data and some information may also be assessed from tests carried out on similar type EN 520 boards.

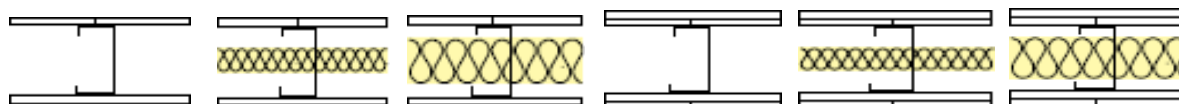
For further information on specialist boards, or if you require anymore information, please contact technical@librasystemsuk.com

Unit E, Halesfield 10, Telford, Shropshire TF7 4QP

T: 01952 581150 F: 01952 585147 E: sales@librasystemsuk.com

www.librasystemsuk.com

The following information is based on 92mm Stud at 600mm centres with 94mm track. The track legs may vary in length depending on deflection allowance and partition height. Install deep track for heights over 4200mm. Extra deep track for partitions exceeding 8000mm.



Libra Ref	Type	Board	Width/mm	EN520 Type	Insulation	Fire Resistance	Acoustics RwdB	Max height	Duty Rating
LS92-001	1	1 x 12.5mm	119	A	None	30	35	4500	Medium
LS92-002	2	1 x 12.5mm	119	A	25mm	30	42	4500	Medium
LS92-003	3	1 x 12.5mm	119	A	50mm	30	44	4500	Medium
LS92-004	4	2 x 12.5mm	144	A	None	60	45	5700	Severe
LS92-005	5	2 x 12.5mm	144	A	25mm	60	50	5700	Severe
LS92-006	6	2 x 12.5mm	144	A	50mm	60	51	5700	Severe
LS92-007	1	1 x 15mm	124	A	None	30	35	4700	Heavy
LS92-008	2	1 x 15mm	124	A	25mm	30	42	4700	Heavy
LS92-009	3	1 x 15mm	124	A	50mm	30	44	4700	Heavy
LS92-010	4	2 x 15mm	154	A	None	60	45	5900	Severe
LS92-011	5	2 x 15mm	154	A	25mm	60	50	5900	Severe
LS92-012	6	2 x 15mm	154	A	50mm	60	52	5900	Severe
LS92-013	1	1 x 12.5mm	119	D	None	30	40	4500	Medium
LS92-014	2	1 x 12.5mm	119	D	25mm	30	43	4500	Medium
LS92-015	3	1 x 12.5mm	119	D	50mm	30	46	4500	Medium
LS92-016	4	2 x 12.5mm	144	D	None	60	48	5700	Severe
LS92-017	5	2 x 12.5mm	144	D	25mm	60	51	5700	Severe
LS92-018	6	2 x 12.5mm	144	D	50mm	60	52	5700	Severe
LS92-019	1	1 x 15mm	124	D	None	30	41	4700	Heavy
LS92-020	2	1 x 15mm	124	D	25mm	30	45	4700	Heavy
LS92-021	3	1 x 15mm	124	D	50mm	30	48	4700	Heavy
LS92-022	4	2 x 15mm	154	D	None	90	51	5900	Severe
LS92-023	5	2 x 15mm	154	D	25mm	90	52	5900	Severe
LS92-024	6	2 x 15mm	154	D	50mm	90	54	5900	Severe
LS92-025	1	1 x 12.5mm	119	F	None	30	37	4500	Medium
LS92-026	2	1 x 12.5mm	119	F	25mm	30	41	4500	Medium
LS92-027	3	1 x 12.5mm	119	F	50mm	30	43	4500	Medium
LS92-028	4	2 x 12.5mm	144	F	None	120	47	5700	Severe
LS92-029	5	2 x 12.5mm	144	F	25mm	120	51	5700	Severe
LS92-030	6	2 x 12.5mm	144	F	50mm	120	52	5700	Severe
LS92-031	1	1 x 15mm	124	F	None	60	39	4700	Heavy
LS92-032	2	1 x 15mm	124	F	25mm	60	41	4700	Heavy
LS92-033	3	1 x 15mm	124	F	50mm	60	45	4700	Heavy
LS92-034	4	2 x 15mm	154	F	None	120	48	5900	Severe
LS92-035	5	2 x 15mm	154	F	25mm	120	51	5900	Severe
LS92-036	6	2 x 15mm	154	F	50mm	120	53	5900	Severe

A - Standard Wallboard / D - Acoustic / F - Fire

Partition maximum heights based on a limiting deflection of L/240 at 200pa

We cannot take any responsibility for the overall design and we would advise that specialist advice is sought at an early stage of design. The following information is based on test data and some information may also be assessed from tests carried out on similar type EN 520 boards.

For further information on specialist boards, or if you require anymore information, please contact technical@librasystemsuk.com

Unit E, Halesfield 10, Telford, Shropshire TF7 4QP

T: 01952 581150 F: 01952 585147 E: sales@librasystemsuk.com

www.librasystemsuk.com

The following information is based on 146mm Stud at 600mm centres with 148mm track. The track legs may vary in length depending on deflection allowance and partition height. Install deep track for heights over 4200mm. Extra deep track for partitions exceeding 8000mm.



Libra Ref	Type	Board	Width/mm	EN520 Type	Insulation	Fire Resistance	Acoustics RwdB	Max height	Duty Rating
LS146-001	1	1 x 12.5mm	173	A	None	30	35	6200	Medium
LS146-002	2	1 x 12.5mm	173	A	25mm	30	42	6200	Medium
LS146-003	3	1 x 12.5mm	173	A	50mm	30	44	6200	Medium
LS146-004	4	2 x 12.5mm	198	A	None	60	45	7600	Severe
LS146-005	5	2 x 12.5mm	198	A	25mm	60	50	7600	Severe
LS146-006	6	2 x 12.5mm	198	A	50mm	60	51	7600	Severe
LS146-007	1	1 x 15mm	178	A	None	30	35	6500	Heavy
LS146-008	2	1 x 15mm	178	A	25mm	30	42	6500	Heavy
LS146-009	3	1 x 15mm	178	A	50mm	30	44	6500	Heavy
LS146-010	4	2 x 15mm	208	A	None	60	45	7900	Severe
LS146-011	5	2 x 15mm	208	A	25mm	60	50	7900	Severe
LS146-012	6	2 x 15mm	208	A	50mm	60	52	7900	Severe
LS146-013	1	1 x 12.5mm	173	D	None	30	40	6200	Medium
LS146-014	2	1 x 12.5mm	173	D	25mm	30	43	6200	Medium
LS146-015	3	1 x 12.5mm	173	D	50mm	30	46	6200	Medium
LS146-016	4	2 x 12.5mm	198	D	None	60	48	7600	Severe
LS146-017	5	2 x 12.5mm	198	D	25mm	60	51	7600	Severe
LS146-018	6	2 x 12.5mm	198	D	50mm	60	52	7600	Severe
LS146-019	1	1 x 15mm	178	D	None	30	41	6500	Heavy
LS146-020	2	1 x 15mm	178	D	25mm	30	45	6500	Heavy
LS146-021	3	1 x 15mm	178	D	50mm	30	48	6500	Heavy
LS146-022	4	2 x 15mm	208	D	None	90	51	7900	Severe
LS146-023	5	2 x 15mm	208	D	25mm	90	52	7900	Severe
LS146-024	6	2 x 15mm	208	D	50mm	90	54	7900	Severe
LS146-025	1	1 x 12.5mm	173	F	None	30	37	6200	Medium
LS146-026	2	1 x 12.5mm	173	F	25mm	30	41	6200	Medium
LS146-027	3	1 x 12.5mm	173	F	50mm	30	43	6200	Medium
LS146-028	4	2 x 12.5mm	198	F	None	120	47	7600	Severe
LS146-029	5	2 x 12.5mm	198	F	25mm	120	51	7600	Severe
LS146-030	6	2 x 12.5mm	198	F	50mm	120	52	7600	Severe
LS146-031	1	1 x 15mm	178	F	None	60	39	6500	Heavy
LS146-032	2	1 x 15mm	178	F	25mm	60	41	6500	Heavy
LS146-033	3	1 x 15mm	178	F	50mm	60	45	6500	Heavy
LS146-034	4	2 x 15mm	208	F	None	120	48	7900	Severe
LS146-035	5	2 x 15mm	208	F	25mm	120	51	7900	Severe
LS146-036	6	2 x 15mm	208	F	50mm	120	53	7900	Severe

A - Standard Wallboard / D - Acoustic / F - Fire

Partition maximum heights based on a limiting deflection of L/240 at 200pa

We cannot take any responsibility for the overall design and we would advise that specialist advice is sought at an early stage of design. The following information is based on test data and some information may also be assessed from tests carried out on similar type EN 520 boards.

For further information on specialist boards, or if you require anymore information, please contact technical@librasystemsuk.com

Unit E, Halesfield 10, Telford, Shropshire TF7 4QP

T: 01952 581150 F: 01952 585147 E: sales@librasystemsuk.com

www.librasystemsuk.com