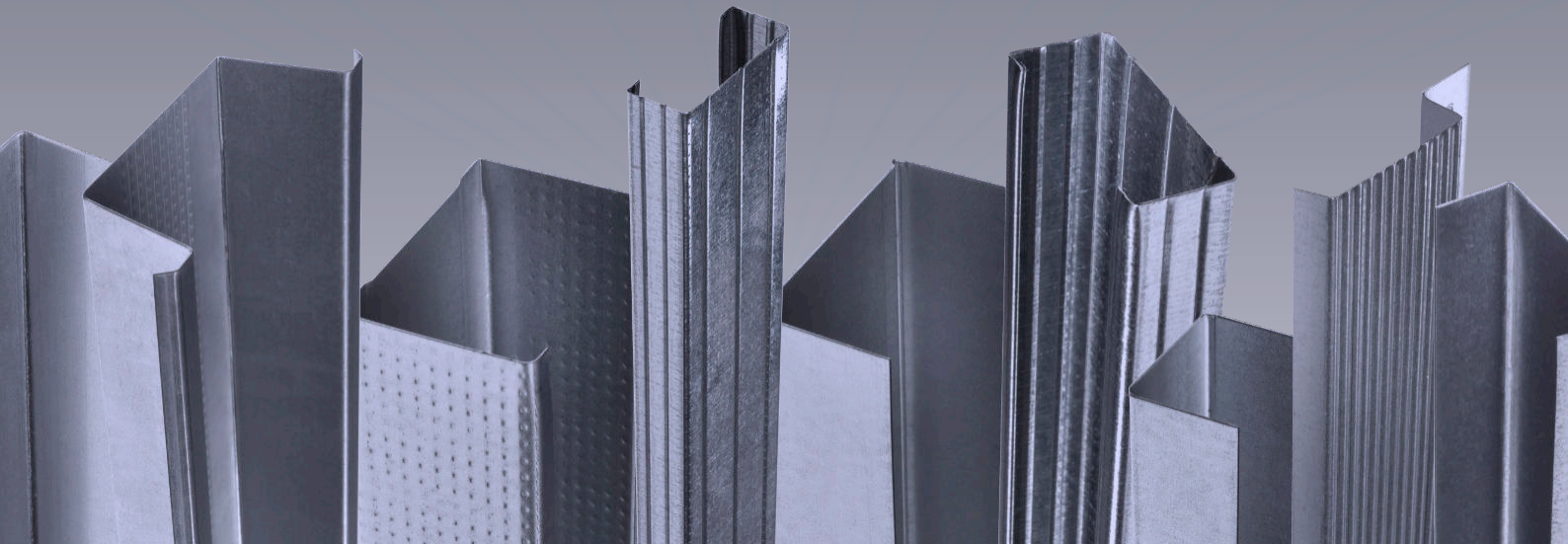




Internal Partitions - Unbraced Twin Wall

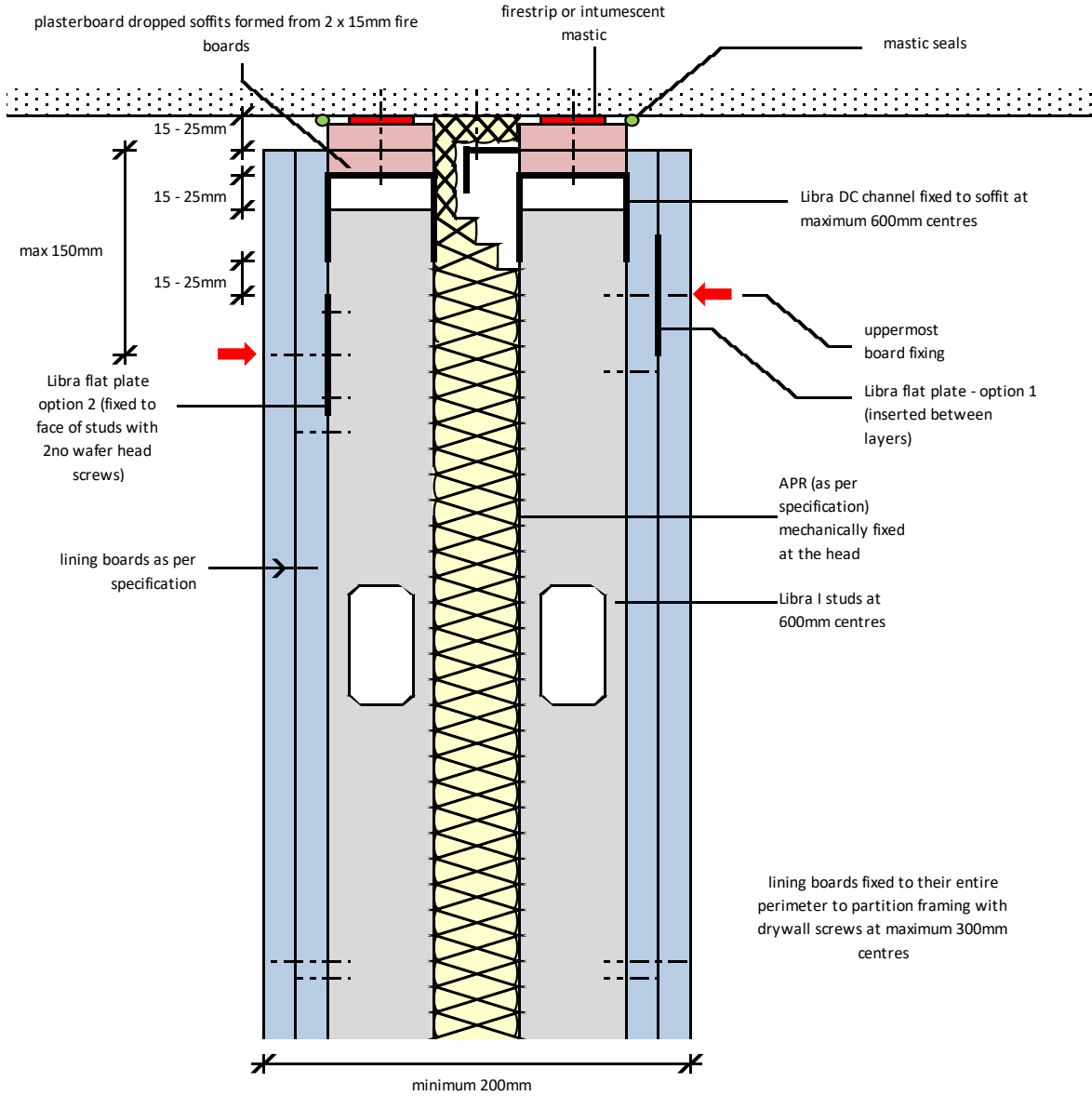


Contents

Metal Stud Partition System (Unbraced Twin Walls)

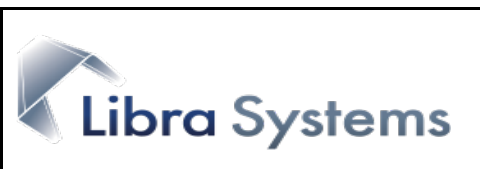
ML/TYP/080	30 / 60 minute 15 - 25mm deflection head
ML/TYP/081	90 / 120 minute 15 - 25mm deflection head
ML/TYP/082	base detail
ML/TYP/083	internal and external corner
ML/TYP/084	abutment detail
ML/TYP/085	T junction
ML/TYP/086	horizontal joint - options 1 & 2
ML/TYP/087	heavy / severe door opening - elevation
ML/TYP/088	heavy / severe door opening - section AA
ML/TYP/089	door head restraint
ML/TYP/090	letter box opening over door head

unbraced twinwall partition
30 / 60 minute 15 - 25mm deflection head



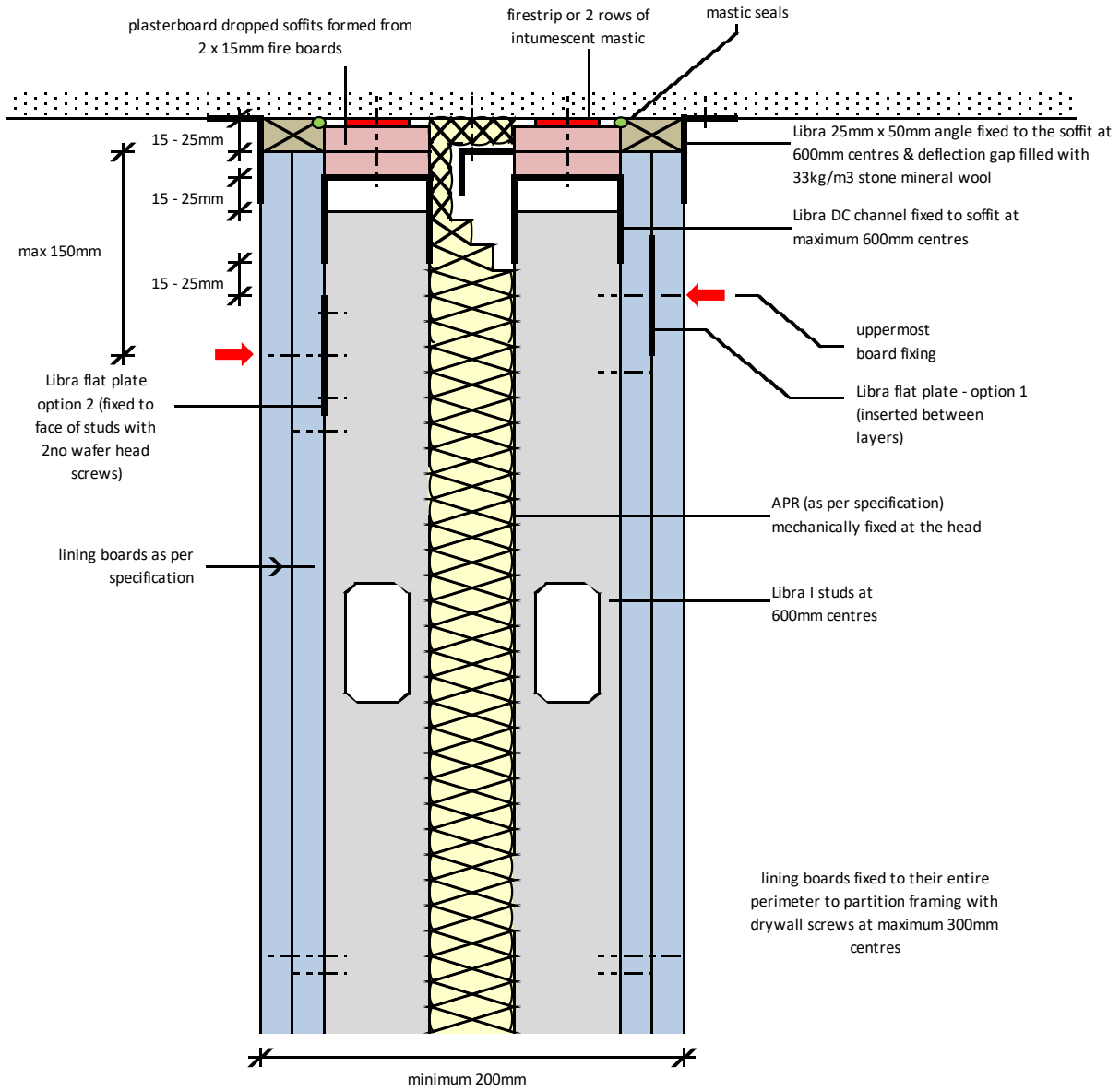
Notes: This drawing should be read in conjunction with the relevant sections of the manufacturer's current product literature. We would draw your attention to the Construction (Design and Management) Regulations 1994 and the Approved Code of Practice which detail the legal duties of clients, client's agents, designers and contractors involved in construction projects.

for discussion purposes only / do not scale



project:			Typical Detail		
initials:	date:	drg no:			
ML	01/03/2017	ML/TYP/080			

unbraced twinwall partition
90 / 120 minute 15 - 25mm deflection head



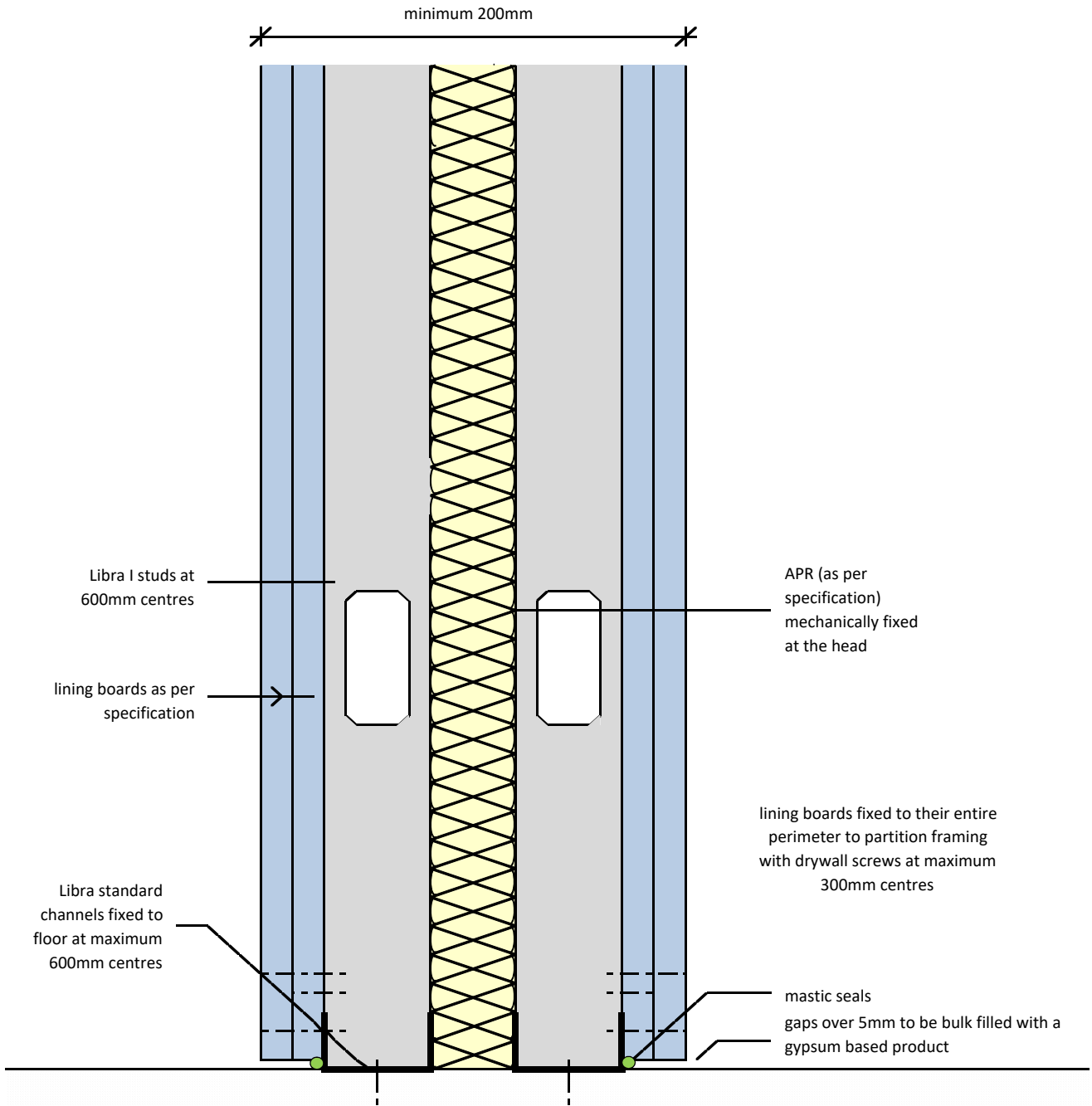
Notes: This drawing should be read in conjunction with the relevant sections of the manufacturers current product literature we would draw your attention to the Construction (Design and Management) Regulations 1994 and the Approved Code of Practice which detail the legal duties of clients, client's agents designers and contractors involved in construction projects.

for discussion purposes only / do not scale



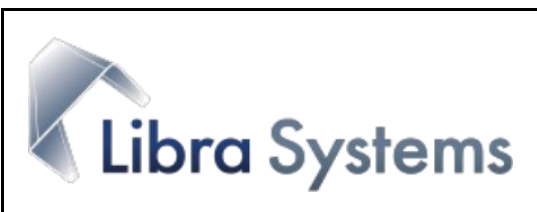
project:			Typical Detail		
initials:	date:	drg no:			
ML	01/03/2017	ML/TYP/081			

**unbraced twinwall partition
base detail**



Notes: This drawing should be read in conjunction with the relevant sections of the manufacturers current product literature we would draw your attention to the Construction (Design and Management) Regulations 1994 and the Approved Code of Practice which detail the legal duties of clients, client's agents designers and contractors involved in construction projects.

for discussion purposes only / do not scale



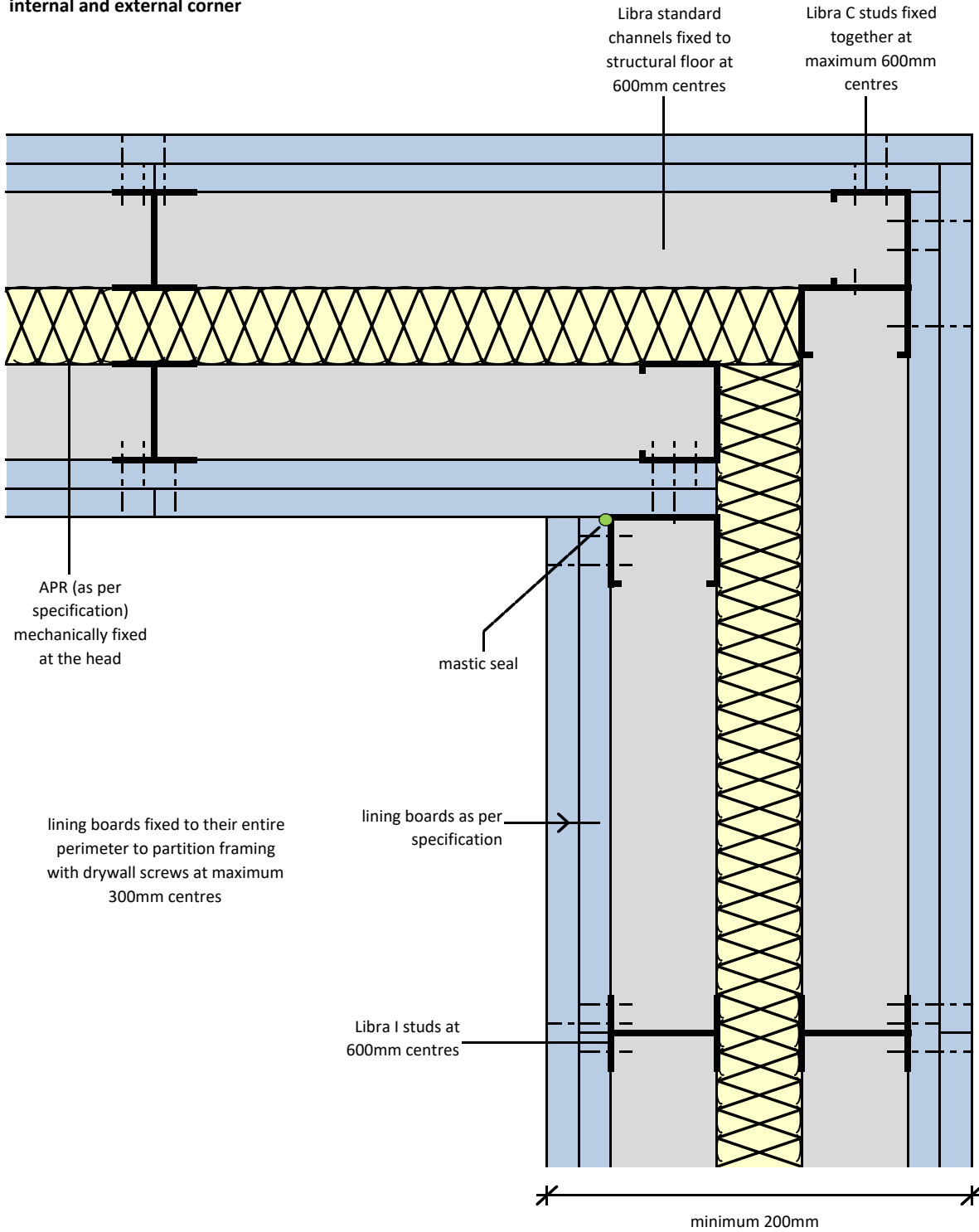
project:	Typical Detail	
----------	----------------	--

initials:	ML
-----------	----

date:	01/03/2017
-------	------------

drg no:	ML/TYP/082
---------	------------

**unbraced twinwall partition
internal and external corner**



Notes: This drawing should be read in conjunction with the relevant sections of the manufacturers current product literature we would draw your attention to the Construction (Design and Management) Regulations 1994 and the Approved Code of Practice which detail the legal duties of clients, client's agents designers and contractors involved in construction projects.

for discussion purposes only / do not scale



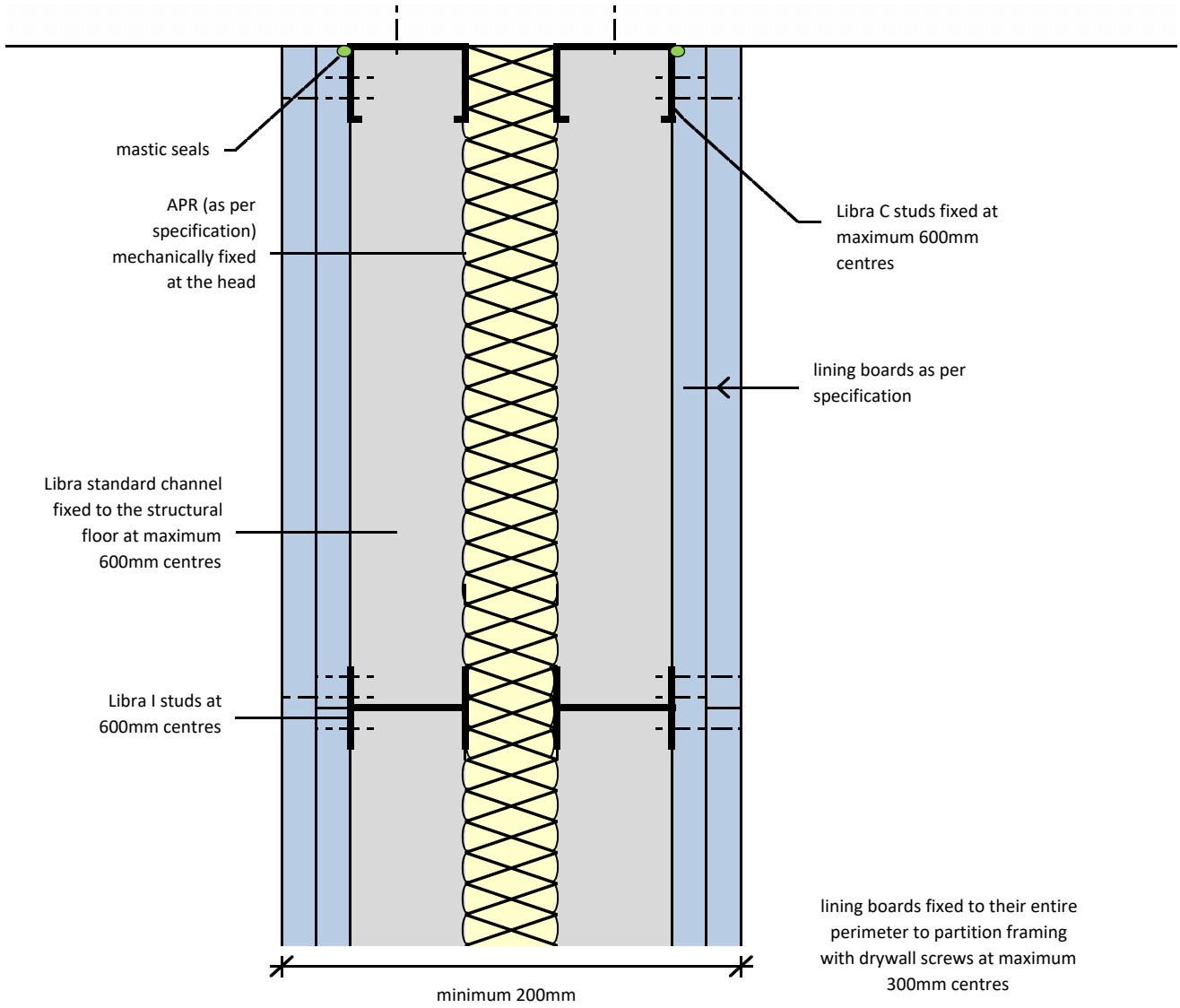
project: Typical Detail

initials:
ML

date:
01/03/2017

drg no:
ML/TYP/083

**unbraced twinwall partition
abutment detail**



Notes: This drawing should be read in conjunction with the relevant sections of the manufacturers current product literature we would draw your attention to the Construction (Design and Management) Regulations 1994 and the Approved Code of Practice which detail the legal duties of clients, client's agents designers and contractors involved in construction projects.

for discussion purposes only / do not scale



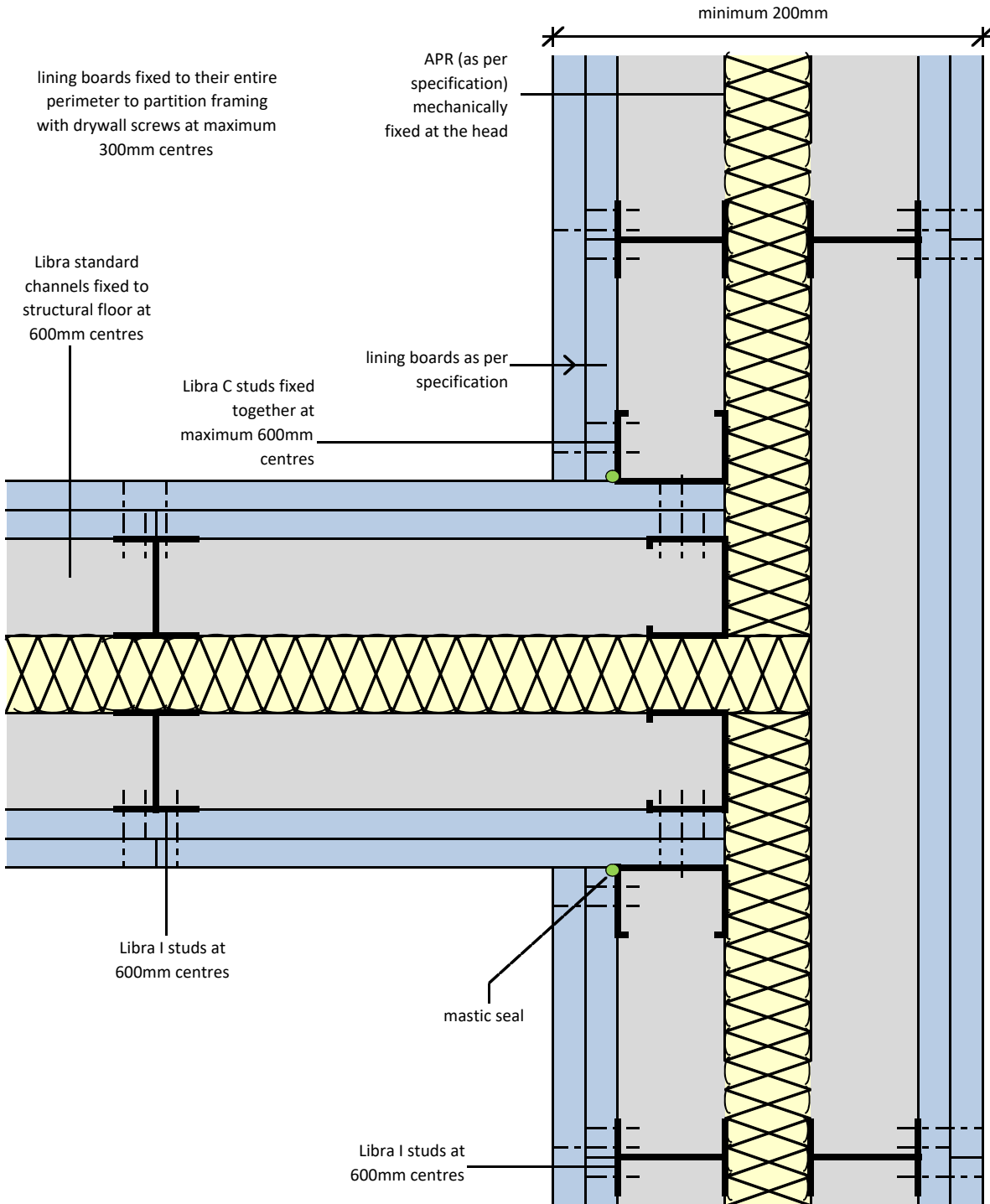
project:	Typical Detail
----------	----------------

initials: ML

date: 01/03/2017

drg no: ML/TYP/084

**unbraced twinwall partition
T junction**



Notes: This drawing should be read in conjunction with the relevant sections of the manufacturers current product literature we would draw your attention to the Construction (Design and Management) Regulations 1994 and the Approved Code of Practice which detail the legal duties of clients, client's agents designers and contractors involved in construction projects.

for discussion purposes only / do not scale



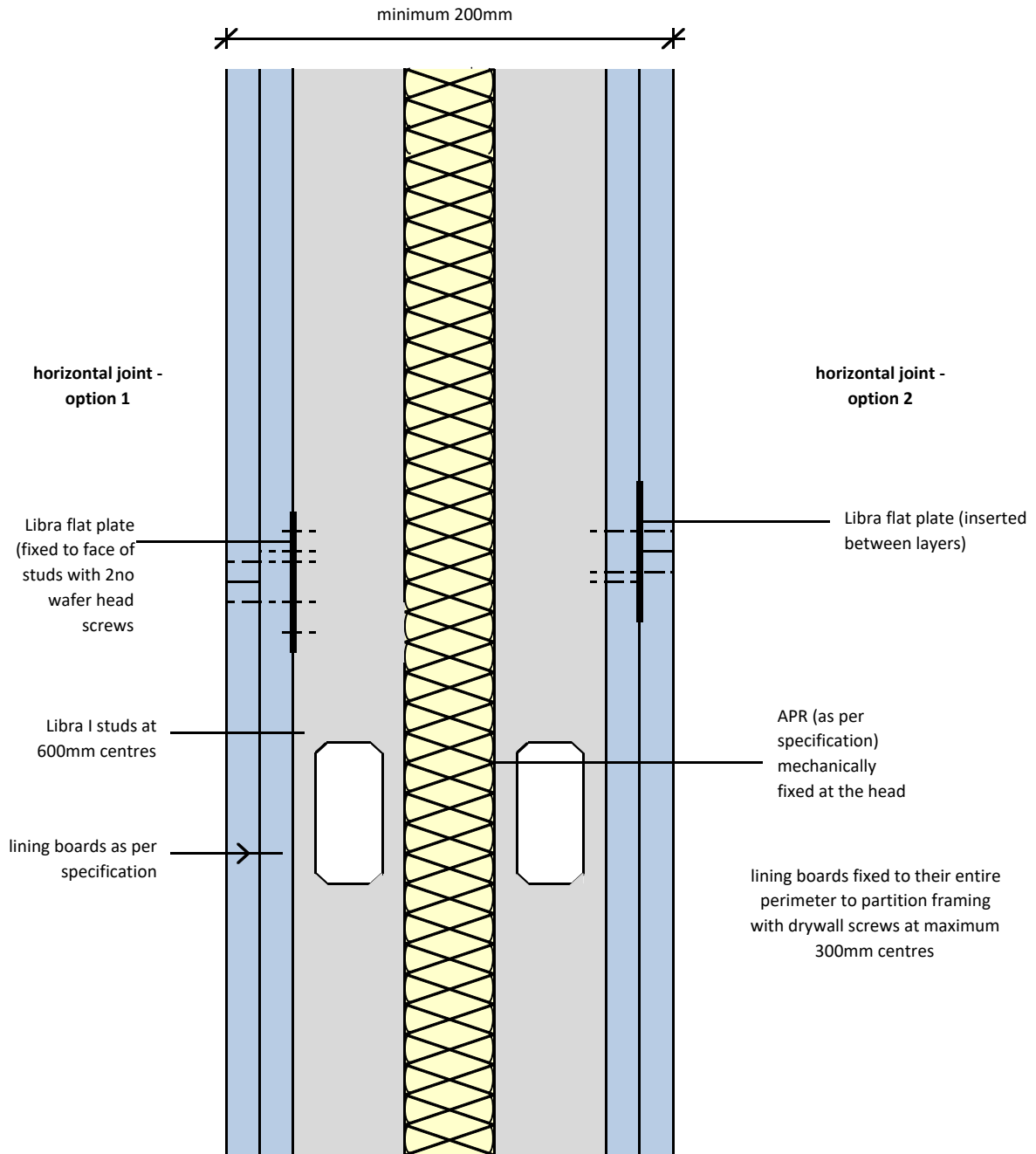
project: Typical Detail

initials: ML

date: 01/03/2017

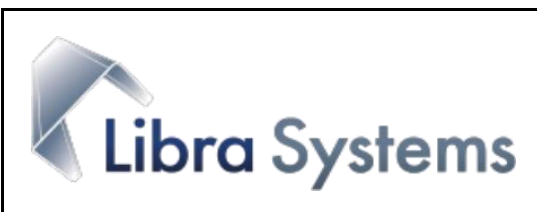
drg no: ML/TYP/085

**unbraced twinwall partition
horizontal joint - options 1 & 2**



Notes: This drawing should be read in conjunction with the relevant sections of the manufacturers current product literature we would draw your attention to the Construction (Design and Management) Regulations 1994 and the Approved Code of Practice which detail the legal duties of clients, client's agents designers and contractors involved in construction projects.

for discussion purposes only / do not scale



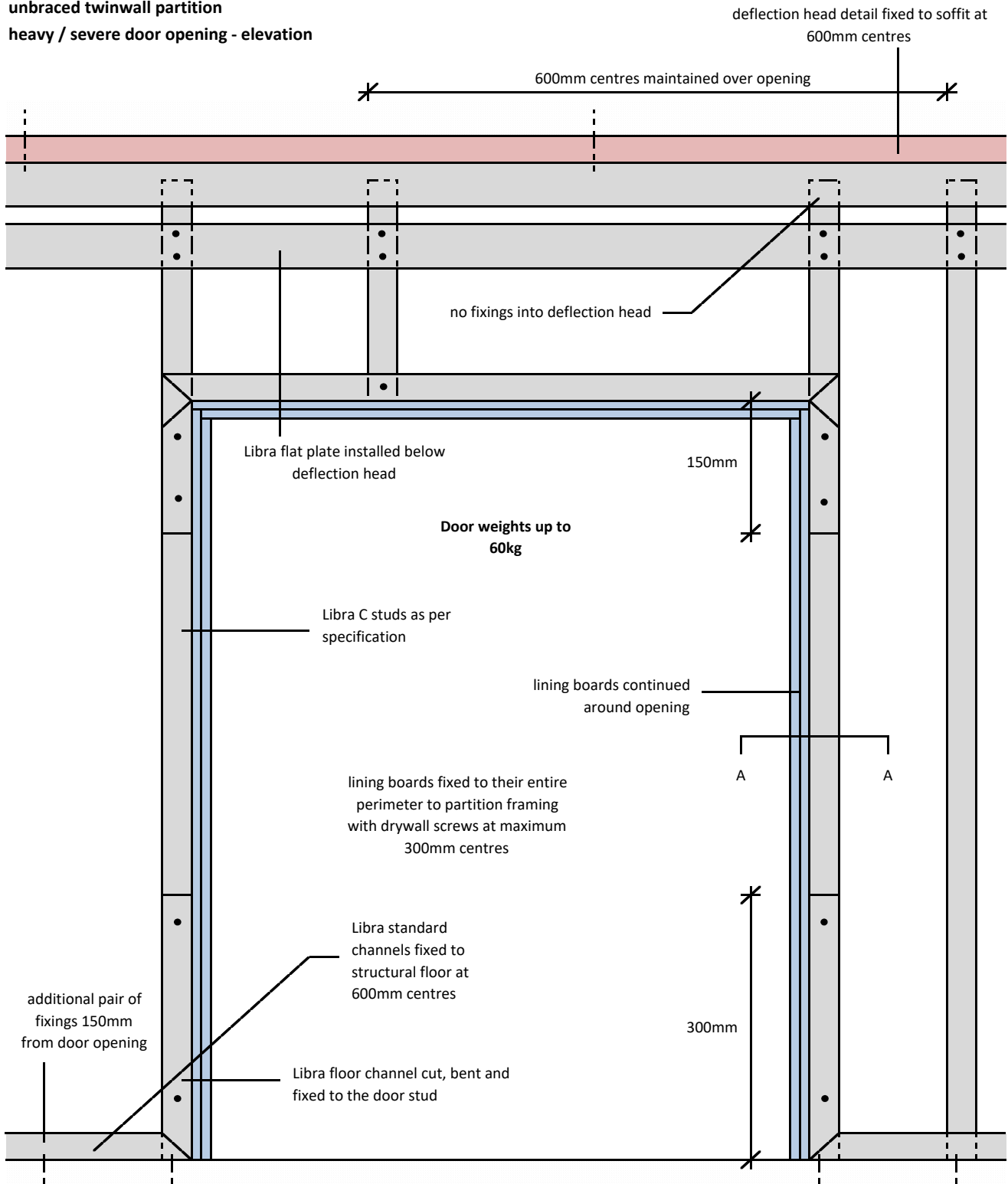
project: Typical Detail

initials: ML

date: 01/03/2017

drg no: ML/TYP/086

**unbraced twinwall partition
heavy / severe door opening - elevation**



Notes: This drawing should be read in conjunction with the relevant sections of the manufacturers current product literature we would draw your attention to the Construction (Design and Management) Regulations 1994 and the Approved Code of Practice which detail the legal duties of clients, client's agents designers and contractors involved in construction projects.

for discussion purposes only / do not scale



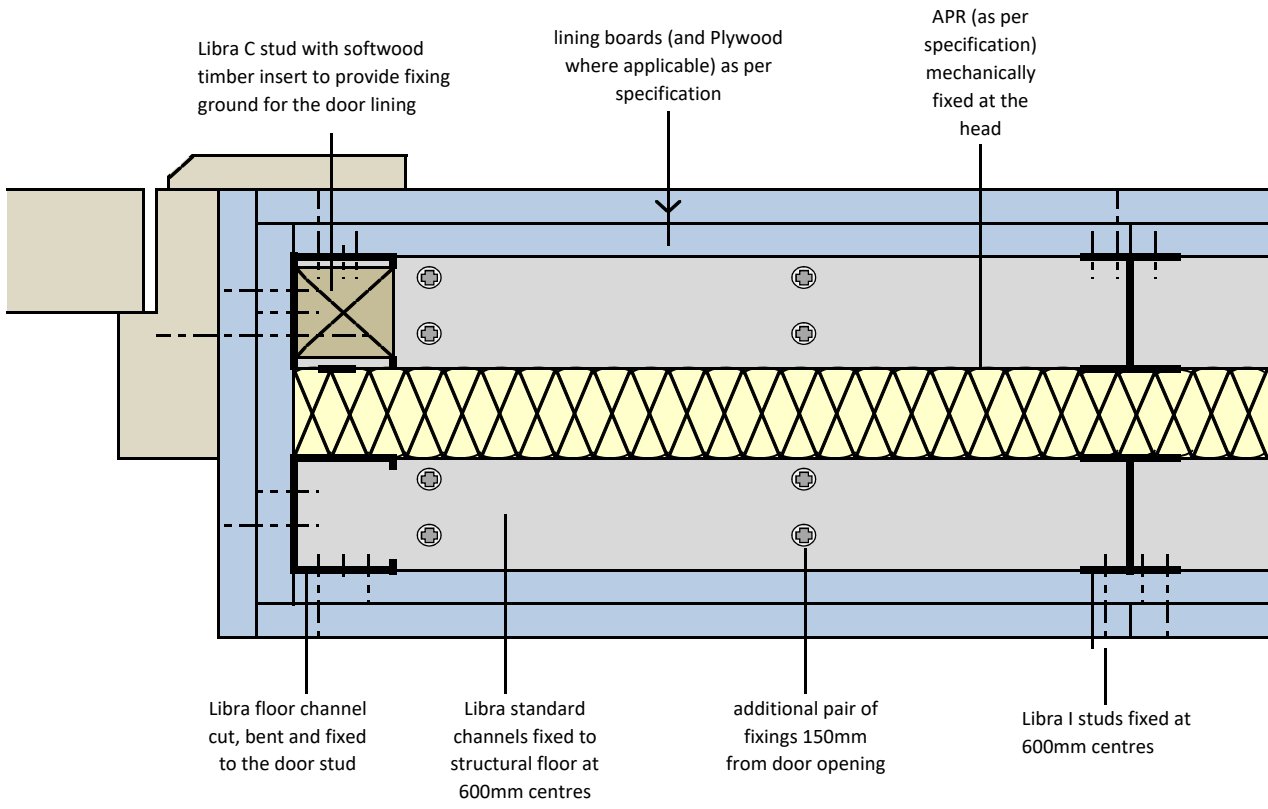
project: Typical Detail

initials: ML

date: 01/03/2017

drg no: ML/TYP/087

**unbraced twinwall partition
heavy / severe door opening - section AA**



lining boards fixed to their entire perimeter to partition framing with drywall screws at maximum 300mm centres

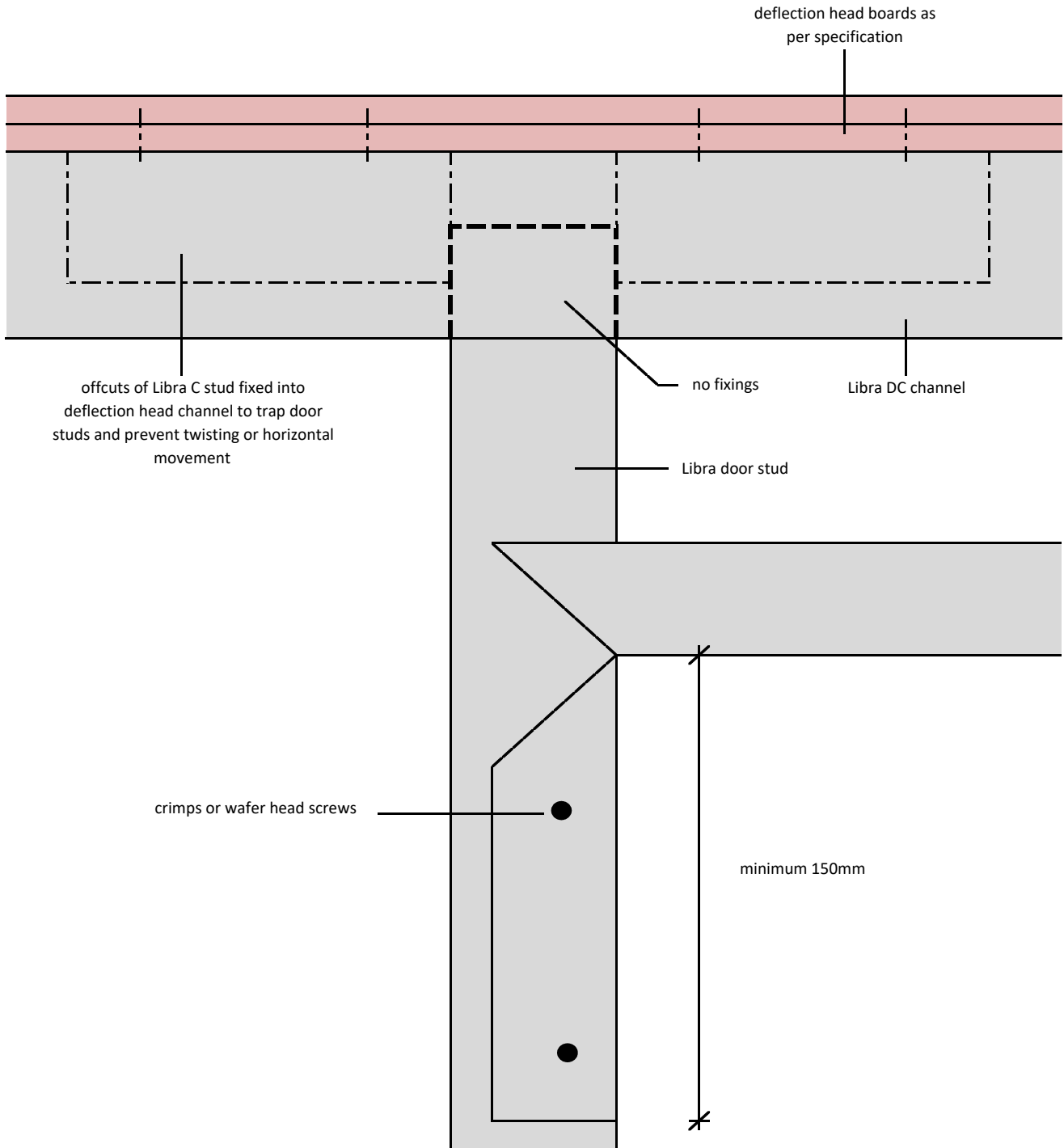
Notes: This drawing should be read in conjunction with the relevant sections of the manufacturers current product literature we would draw your attention to the Construction (Design and Management) Regulations 1994 and the Approved Code of Practice which detail the legal duties of clients, client's agents designers and contractors involved in construction projects.

for discussion purposes only / do not scale



project: Typical Detail		
initials: ML	date: 01/03/2017	drg no: ML/TYP/088

**unbraced twinwall partition
door head restraint (deflection heads)**



Notes: This drawing should be read in conjunction with the relevant sections of the manufacturers current product literature we would draw your attention to the Construction (Design and Management) Regulations 1994 and the Approved Code of Practice which detail the legal duties of clients, client's agents designers and contractors involved in construction projects.

for discussion purposes only / do not scale



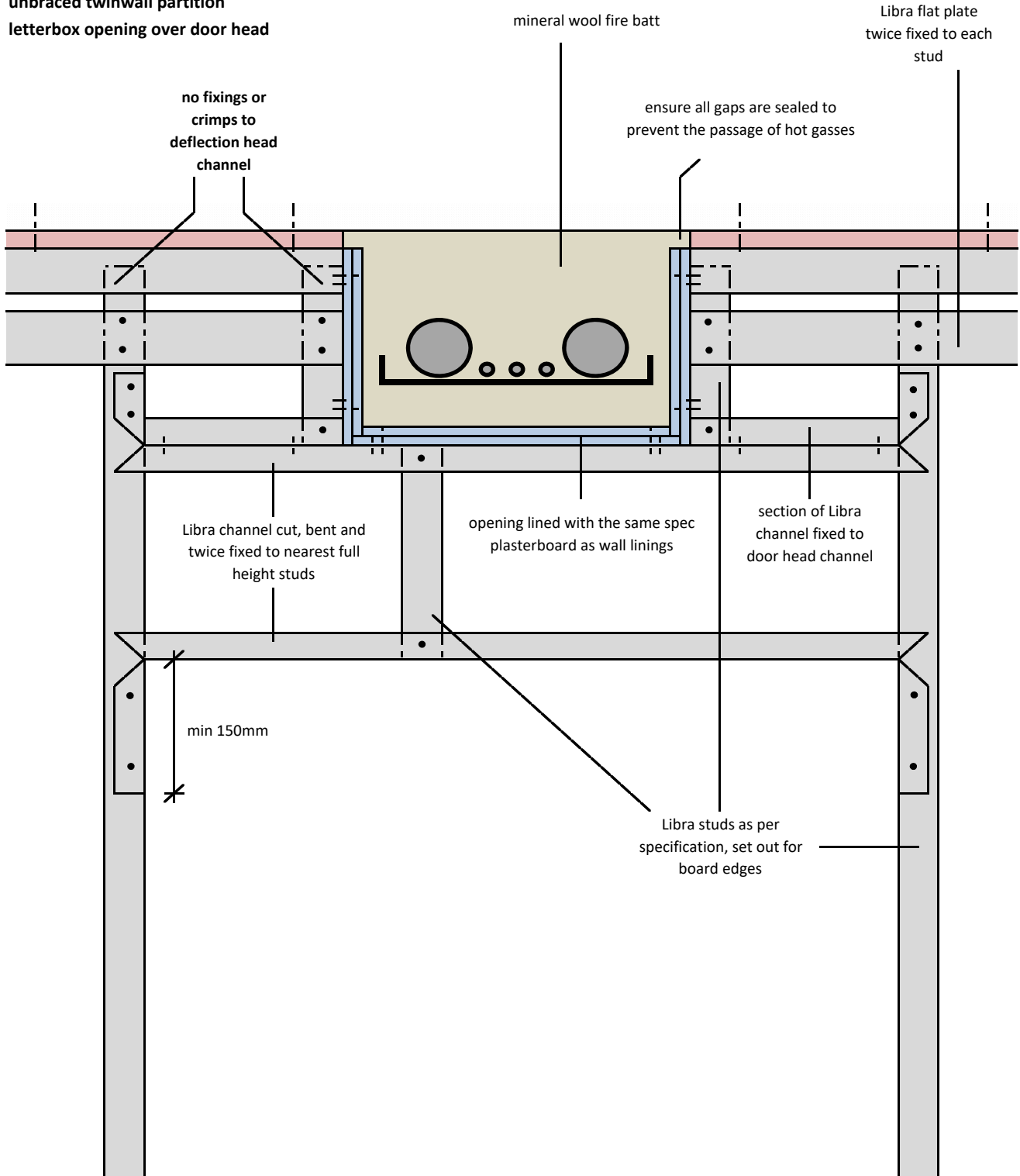
project: Typical Detail

initials: ML

date: 01/03/2017

drg no: ML/TYP/089

**unbraced twinwall partition
letterbox opening over door head**



Notes: This drawing should be read in conjunction with the relevant sections of the manufacturers current product literature we would draw your attention to the Construction (Design and Management) Regulations 1994 and the Approved Code of Practice which detail the legal duties of clients, client's agents designers and contractors involved in construction projects.

for discussion purposes only / do not scale



project: Typical Detail

initials:
ML

date:
01/03/2017

drg no:
ML/TYP/090