



# Libra Systems

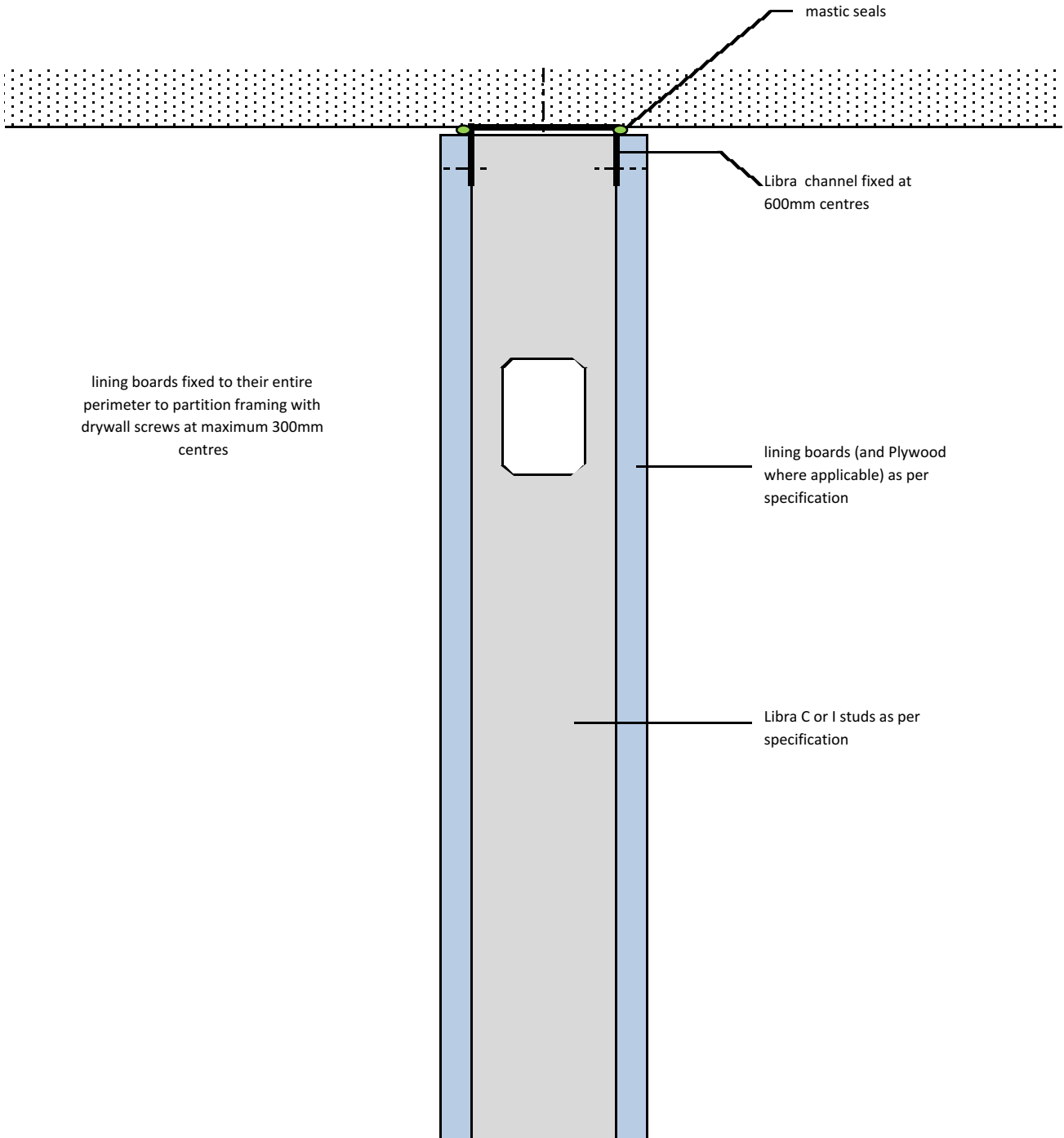
Internal Partitions Single Skin

Details





standard internal partition  
 standard head detail - fire rating as per system design  
 no deflection allowance



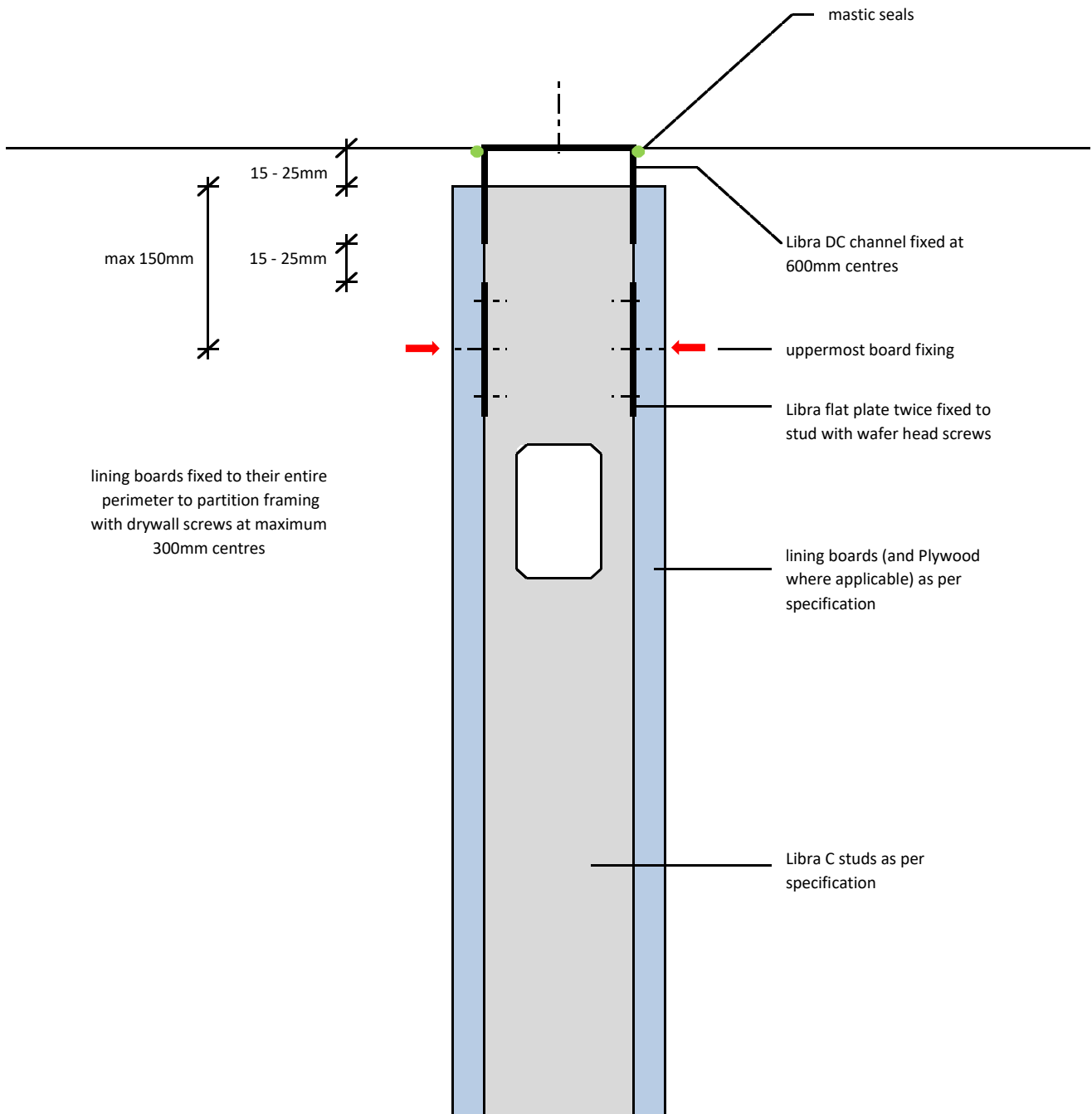
Notes: This drawing should be read in conjunction with the relevant sections of the manufacturers current product literature we would draw your attention to the Construction (Design and Management) Regulations 1994 and the Approved Code of Practice which detail the legal duties of clients, client's agents designers and contractors involved in construction projects.

for discussion purposes only / do not scale



project: Typical Detail		
initials: ML	date: 09/10/2017	drg no: ML/TYP/001

standard internal partition  
 15 - 25mm / non fire rated deflection head



Notes: This drawing should be read in conjunction with the relevant sections of the manufacturers current product literature we would draw your attention to the Construction (Design and Management) Regulations 1994 and the Approved Code of Practice which detail the legal duties of clients, client's agents designers and contractors involved in construction projects.

for discussion purposes only / do not scale



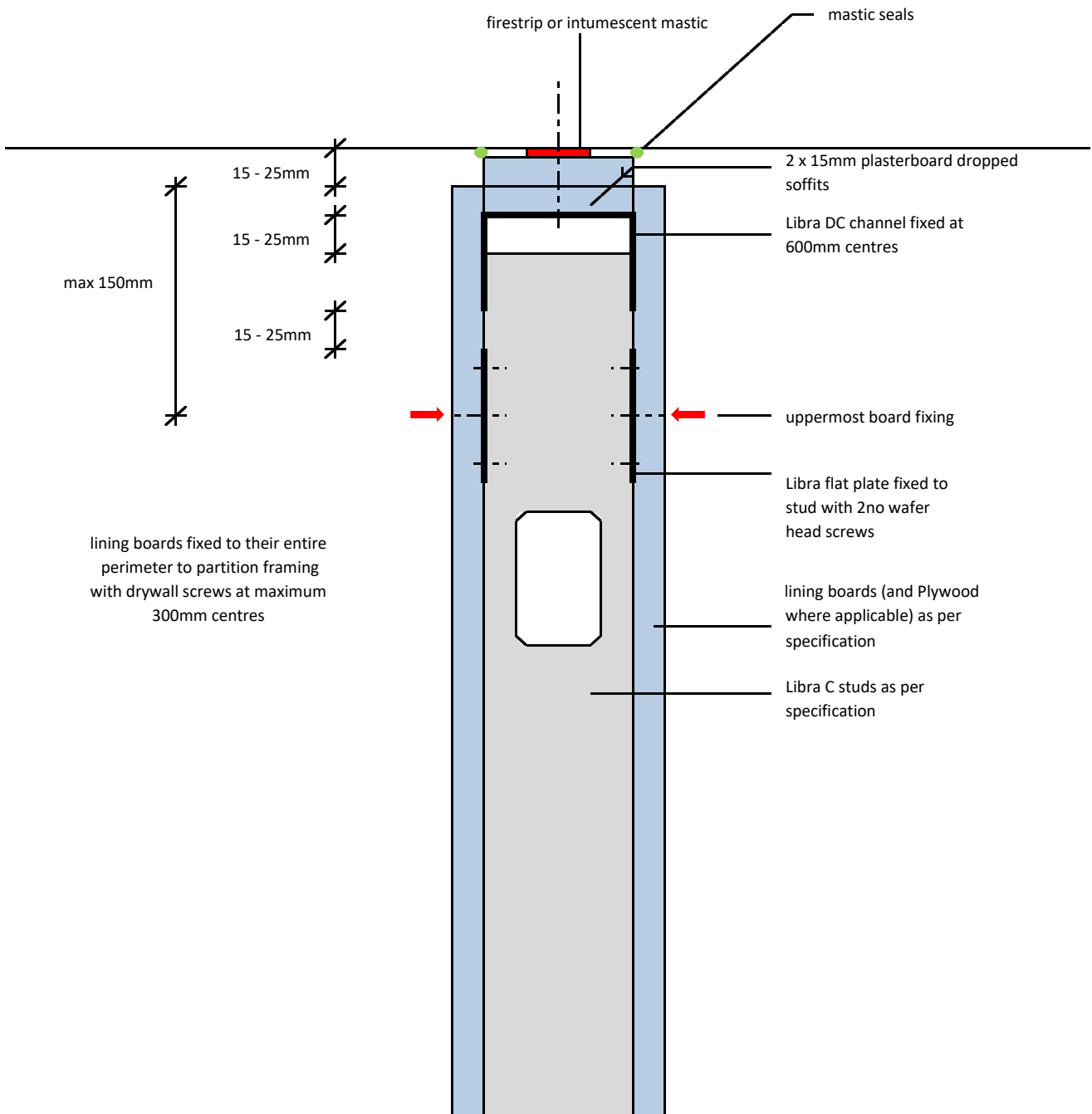
project:  
 Typical Detail

initials:  
 ML

date:  
 21/5/2017

drg no:  
 ML/TYP/002

standard internal partition  
 15 - 25mm / 30 or 60 minute deflection head



Notes: This drawing should be read in conjunction with the relevant sections of the manufacturers current product literature we would draw your attention to the Construction (Design and Management) Regulations 1994 and the Approved Code of Practice which detail the legal duties of clients, client's agents designers and contractors involved in construction projects.

for discussion purposes only / do not scale



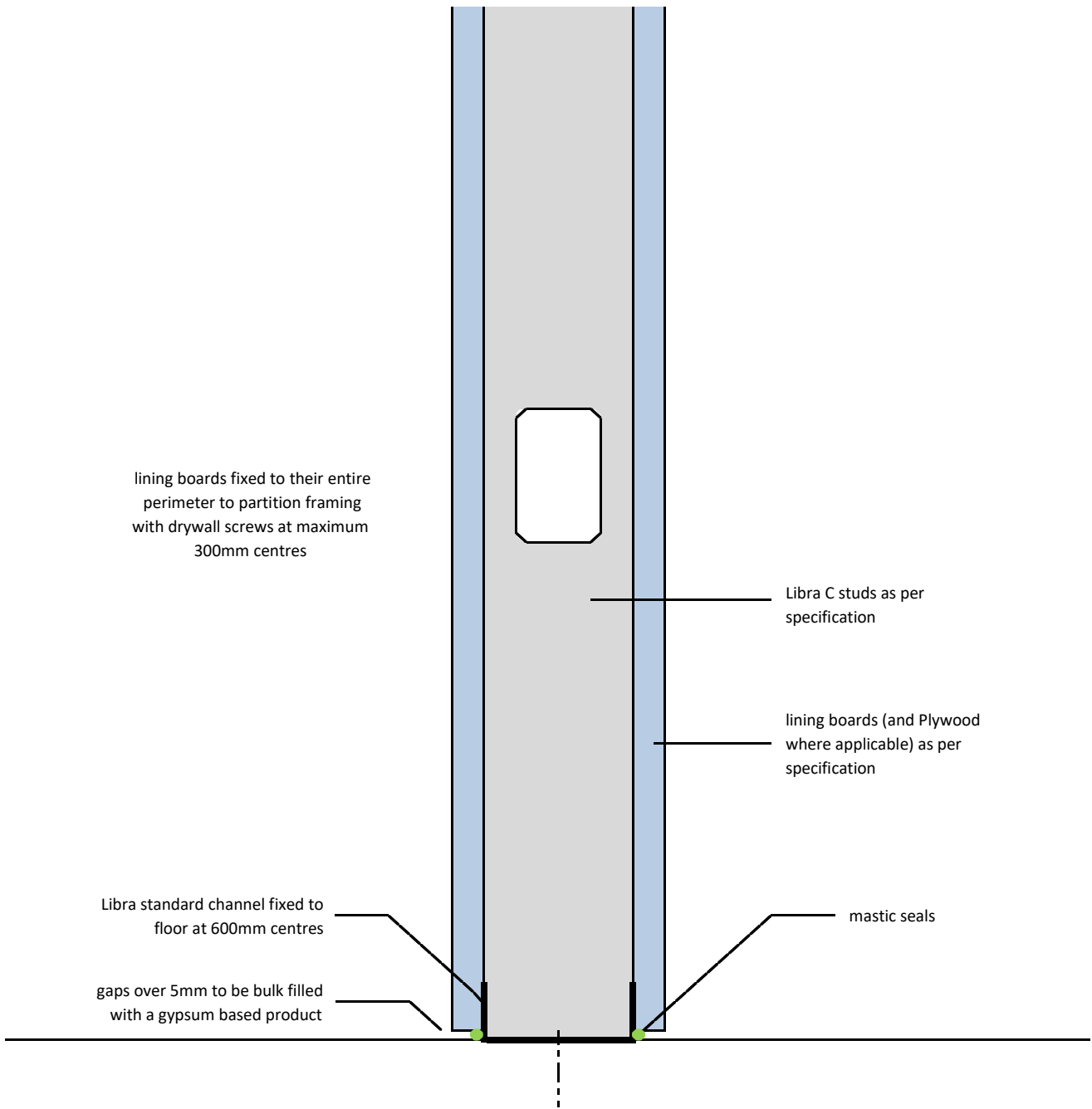
project:  
 Typical Detail

initials:  
 ML

date:  
 21/5/2017

drg no:  
 ML/TYP/003

standard internal partition  
base detail



Notes: This drawing should be read in conjunction with the relevant sections of the manufacturers current product literature we would draw your attention to the Construction (Design and Management) Regulations 1994 and the Approved Code of Practice which detail the legal duties of clients, client's agents designers and contractors involved in construction projects.

for discussion purposes only / do not scale



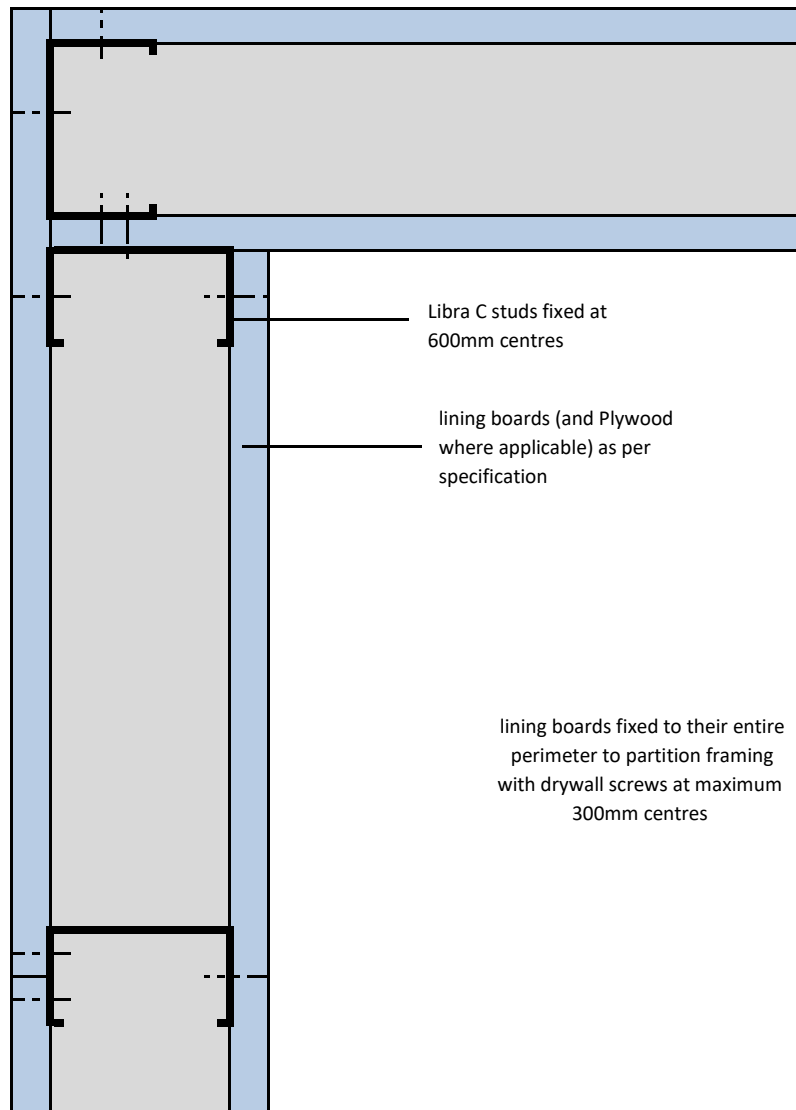
project:  
Typical Detail

initials:  
ML

date:  
21/5/2017

drg no:  
ML/TYP/004

standard internal partition  
internal and external corner detail



Notes: This drawing should be read in conjunction with the relevant sections of the manufacturers current product literature we would draw your attention to the Construction (Design and Management) Regulations 1994 and the Approved Code of Practice which detail the legal duties of clients, client's agents designers and contractors involved in construction projects.

for discussion purposes only / do not scale



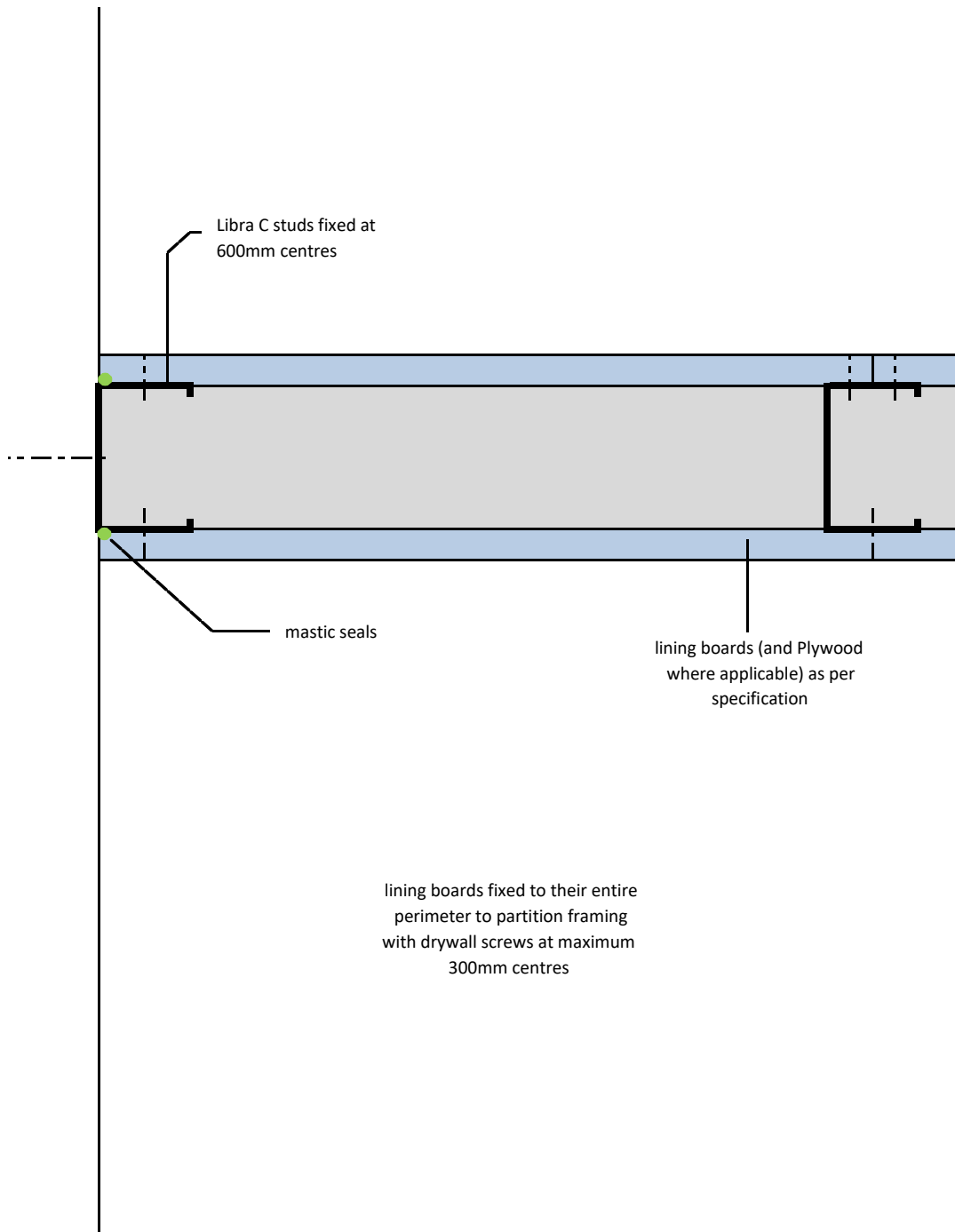
project:  
Typical Detail

initials:  
ML

date:  
21/5/2017

drg no:  
ML/TYP/005

standard internal partition  
abutment detail



Notes: This drawing should be read in conjunction with the relevant sections of the manufacturers current product literature we would draw your attention to the Construction (Design and Management) Regulations 1994 and the Approved Code of Practice which detail the legal duties of clients, client's agents designers and contractors involved in construction projects.

for discussion purposes only / do not scale



project:  
Typical Detail

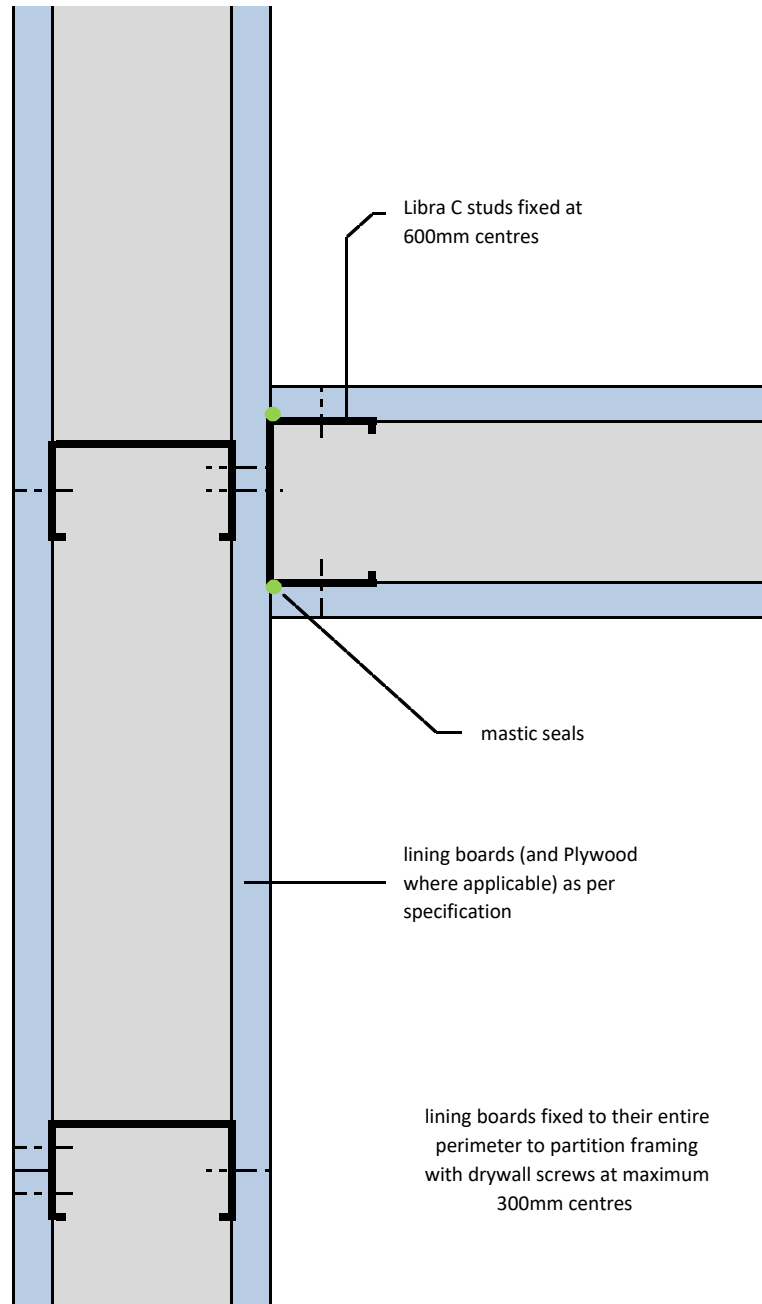
initials:  
ML

date:  
21/5/2017

drg no:  
ML/TYP/006

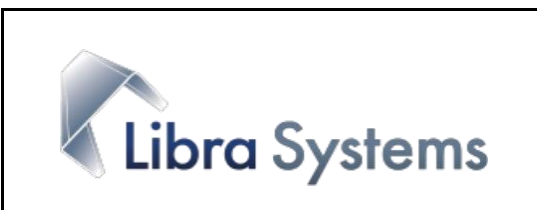


standard internal partition  
T Junction



Notes: This drawing should be read in conjunction with the relevant sections of the manufacturers current product literature we would draw your attention to the Construction (Design and Management) Regulations 1994 and the Approved Code of Practice which detail the legal duties of clients, client's agents designers and contractors involved in construction projects.

for discussion purposes only / do not scale



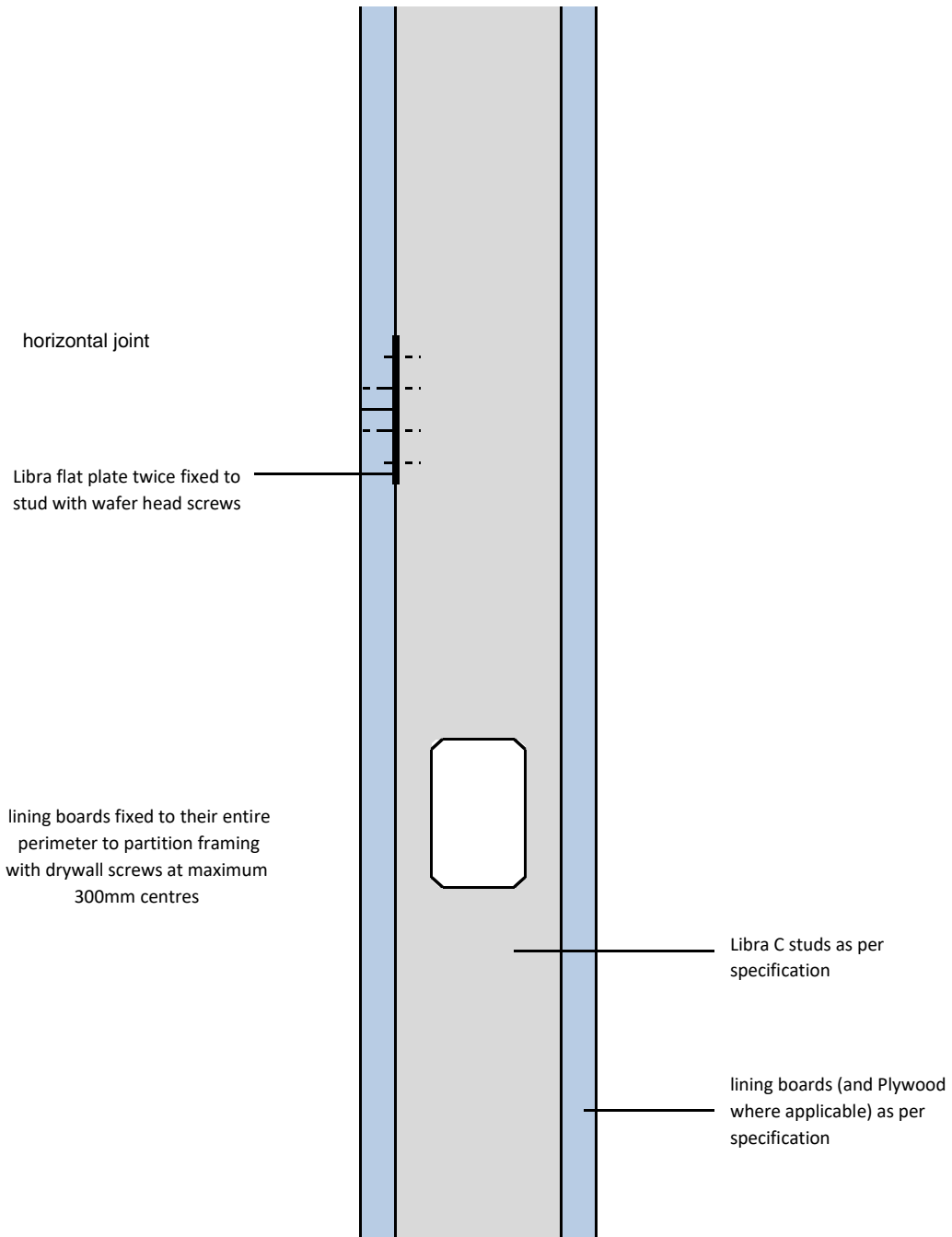
project:	Typical Detail	
----------	----------------	--

initials:
ML

date:
21/5/2017

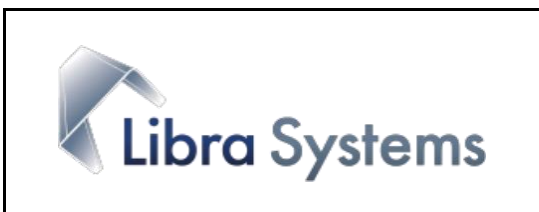
drg no:
ML/TYP/007

standard internal partition  
horizontal joint



Notes: This drawing should be read in conjunction with the relevant sections of the manufacturers current product literature we would draw your attention to the Construction (Design and Management) Regulations 1994 and the Approved Code of Practice which detail the legal duties of clients, client's agents designers and contractors involved in construction projects.

for discussion purposes only / do not scale



project:  
Typical Detail

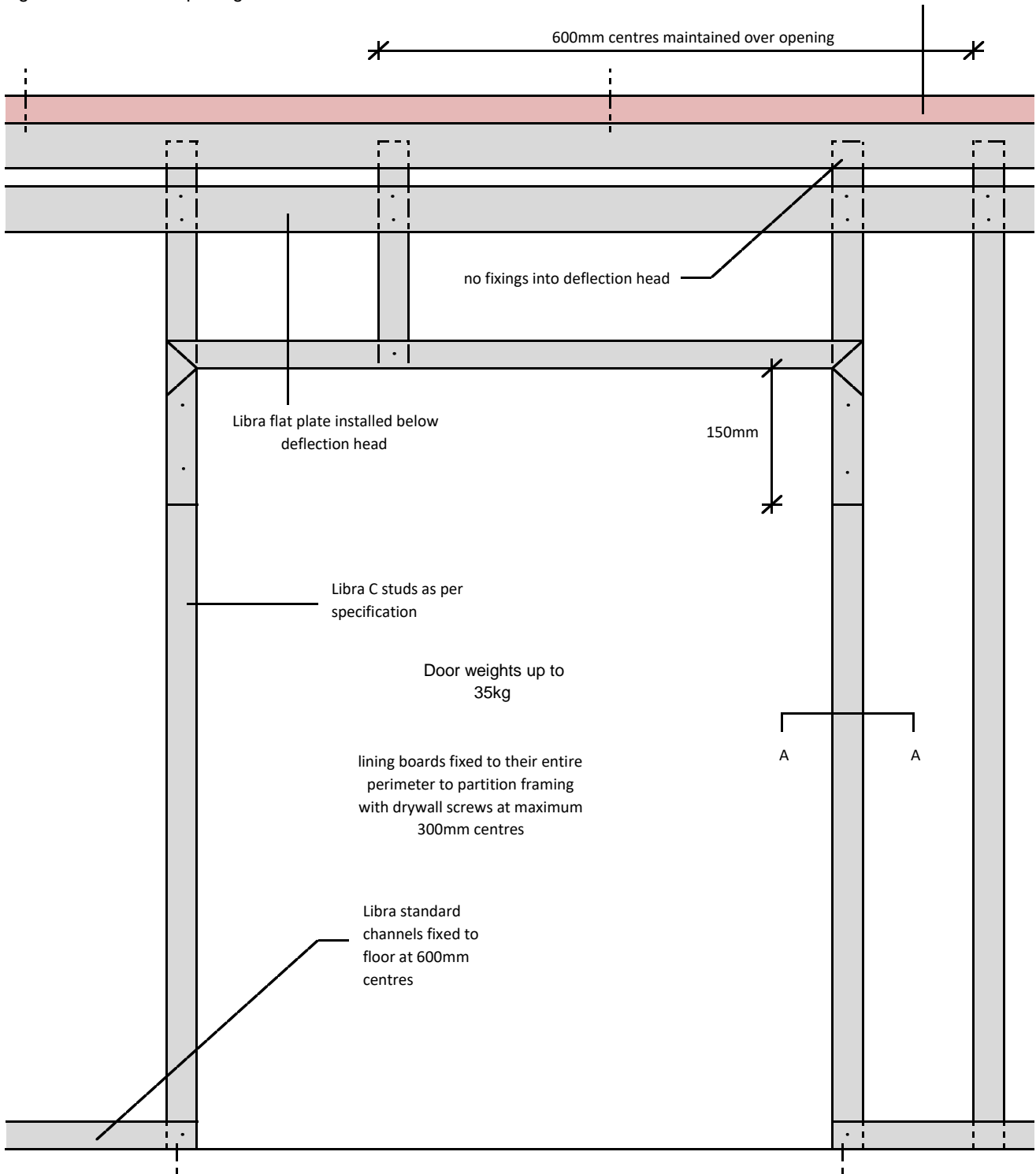
initials:  
ML

date:  
21/5/2017

drg no:  
ML/TYP/008

standard internal partition  
light / medium door opening

deflection head detail fixed to soffit at  
600mm centres



Notes: This drawing should be read in conjunction with the relevant sections of the manufacturers current product literature we would draw your attention to the Construction (Design and Management) Regulations 1994 and the Approved Code of Practice which detail the legal duties of clients, client's agents designers and contractors involved in construction projects.

for discussion purposes only / do not scale



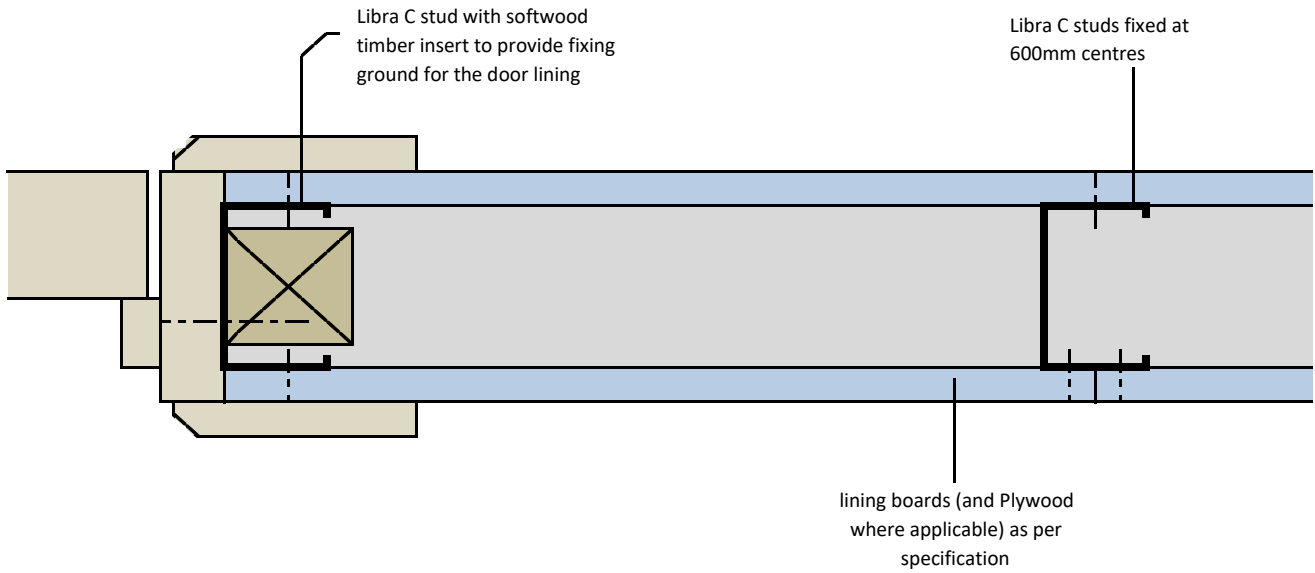
project:  
Typical Detail

initials:  
ML

date:  
21/5/2017

drg no:  
ML/TYP/009

standard internal partition  
light / medium door opening - section AA



lining boards fixed to their entire perimeter to partition framing with drywall screws at maximum 300mm centres

Notes: This drawing should be read in conjunction with the relevant sections of the manufacturers current product literature we would draw your attention to the Construction (Design and Management) Regulations 1994 and the Approved Code of Practice which detail the legal duties of clients, client's agents designers and contractors involved in construction projects.

for discussion purposes only / do not scale



project:  
Typical Detail

initials:  
ML

date:  
21/5/2107

drg no:  
ML/TYP/010