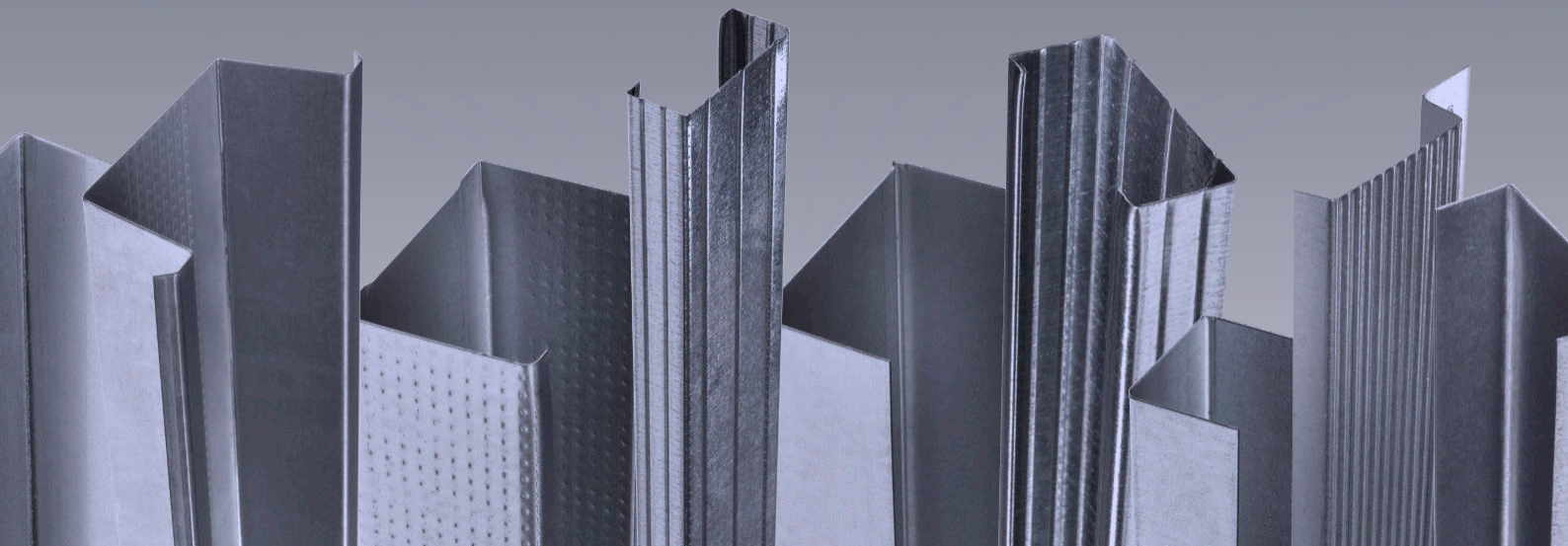




## Internal Partitions - Single Skin Details

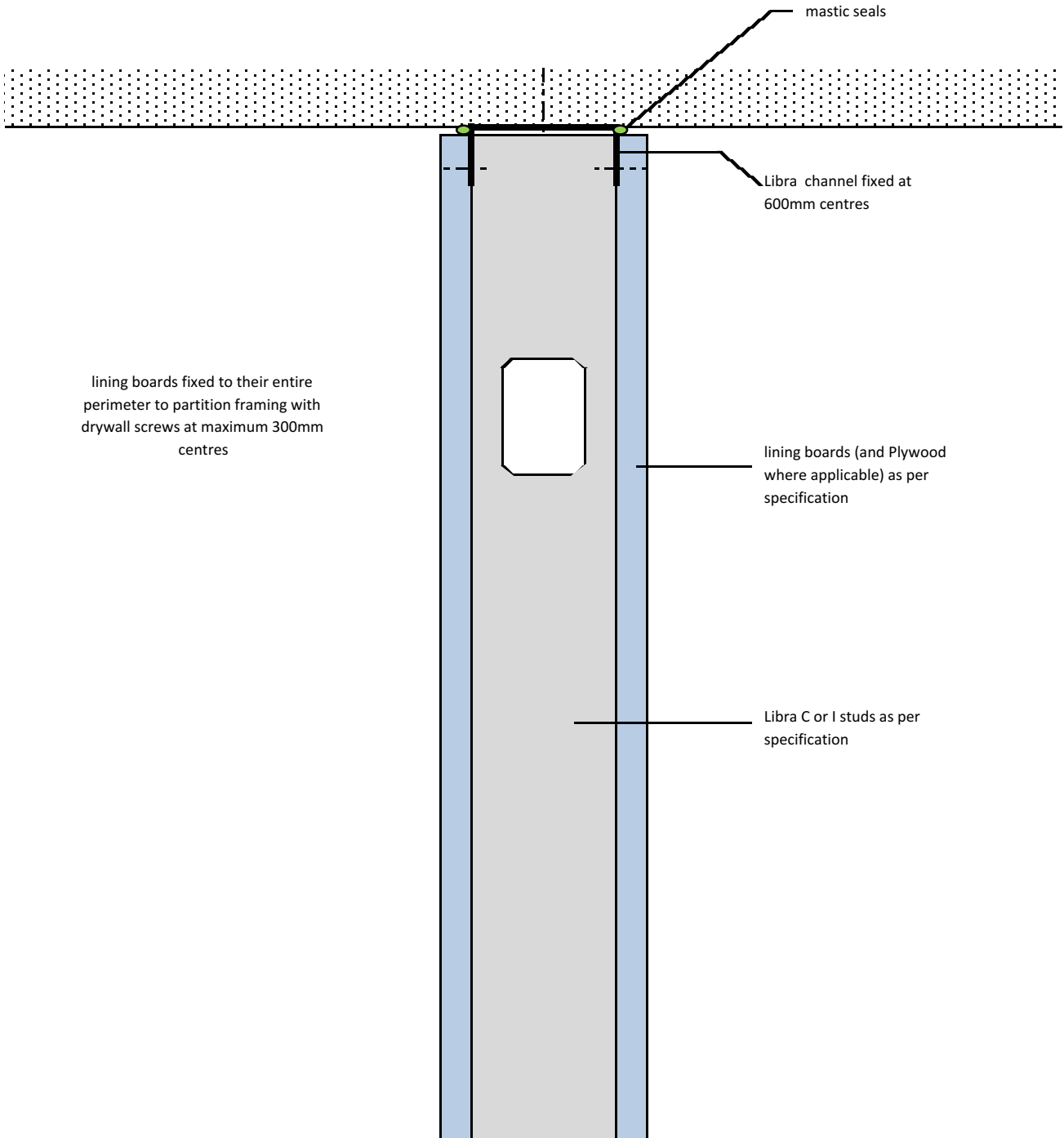


# Contents

## Metal Stud Partition System (Internal Partitions Single Skin)

|            |  |
|------------|--|
| ML/TYP/001 | standard head detail                       |
| ML/TYP/002 | 15 - 25mm / non fire rated deflection head |
| ML/TYP/003 | 15 - 25mm / 30 or 60 minute deflection     |
| ML/TYP/004 | head base detail                           |
| ML/TYP/005 | internal and external corner detail        |
| ML/TYP/006 | abutment detail                            |
| ML/TYP/007 | T Junction                                 |
| ML/TYP/008 | horizontal joint                           |
| ML/TYP/009 | light / medium door opening                |
| ML/TYP/010 | light / medium door opening - section AA   |
| ML/TYP/011 | C & I stud splice detail                   |
| ML/TYP/012 | patress detail                             |

standard internal partition  
 standard head detail - fire rating as per system design  
 no deflection allowance



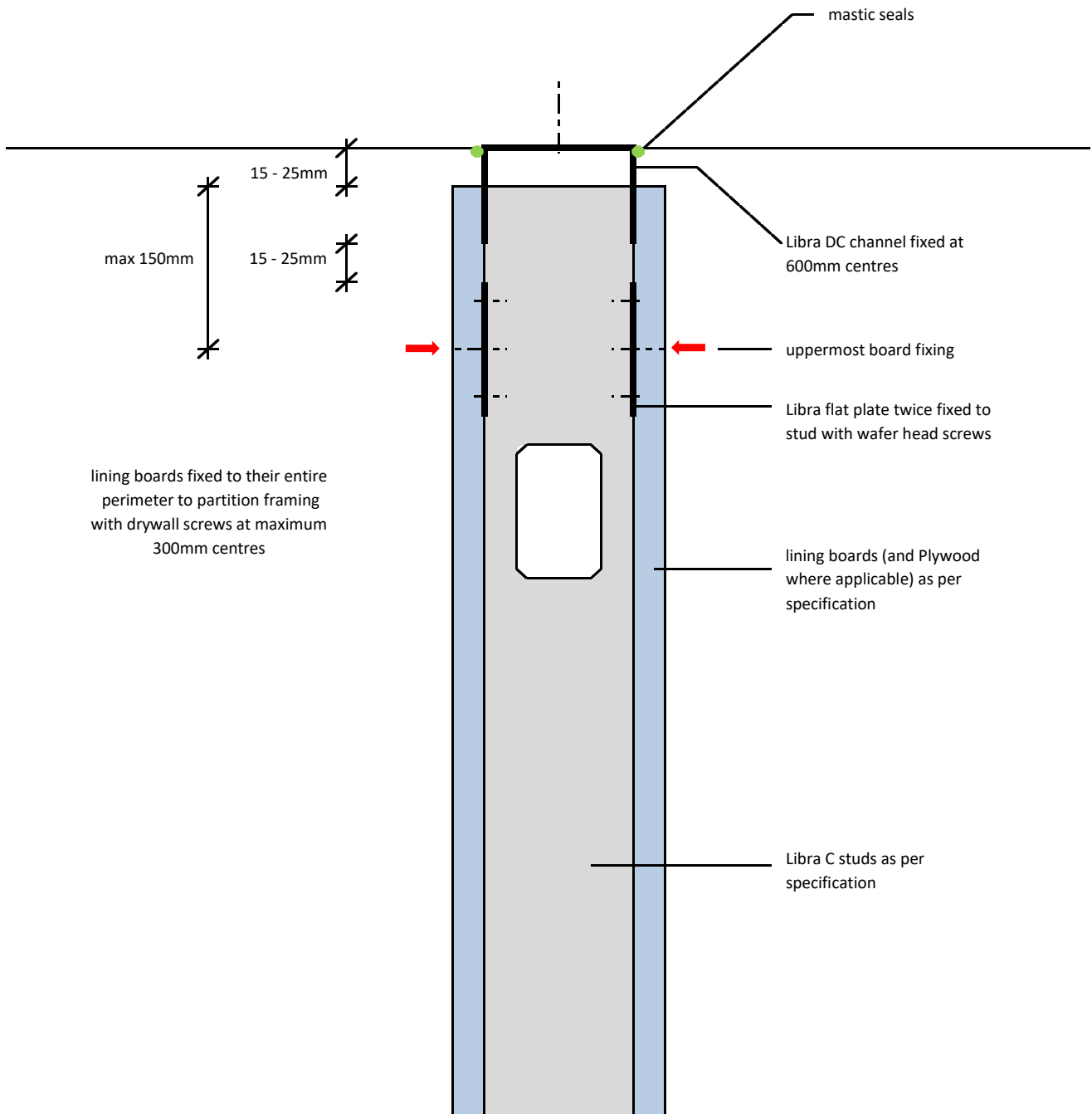
Notes: This drawing should be read in conjunction with the relevant sections of the manufacturers current product literature we would draw your attention to the Construction (Design and Management) Regulations 1994 and the Approved Code of Practice which detail the legal duties of clients, client's agents designers and contractors involved in construction projects.

for discussion purposes only / do not scale



|                            |                     |                       |
|----------------------------|---------------------|-----------------------|
| project:<br>Typical Detail |                     |                       |
| initials:<br>ML            | date:<br>09/10/2017 | drg no:<br>ML/TYP/001 |

standard internal partition  
 15 - 25mm / non fire rated deflection head



Notes: This drawing should be read in conjunction with the relevant sections of the manufacturers current product literature we would draw your attention to the Construction (Design and Management) Regulations 1994 and the Approved Code of Practice which detail the legal duties of clients, client's agents designers and contractors involved in construction projects.

for discussion purposes only / do not scale



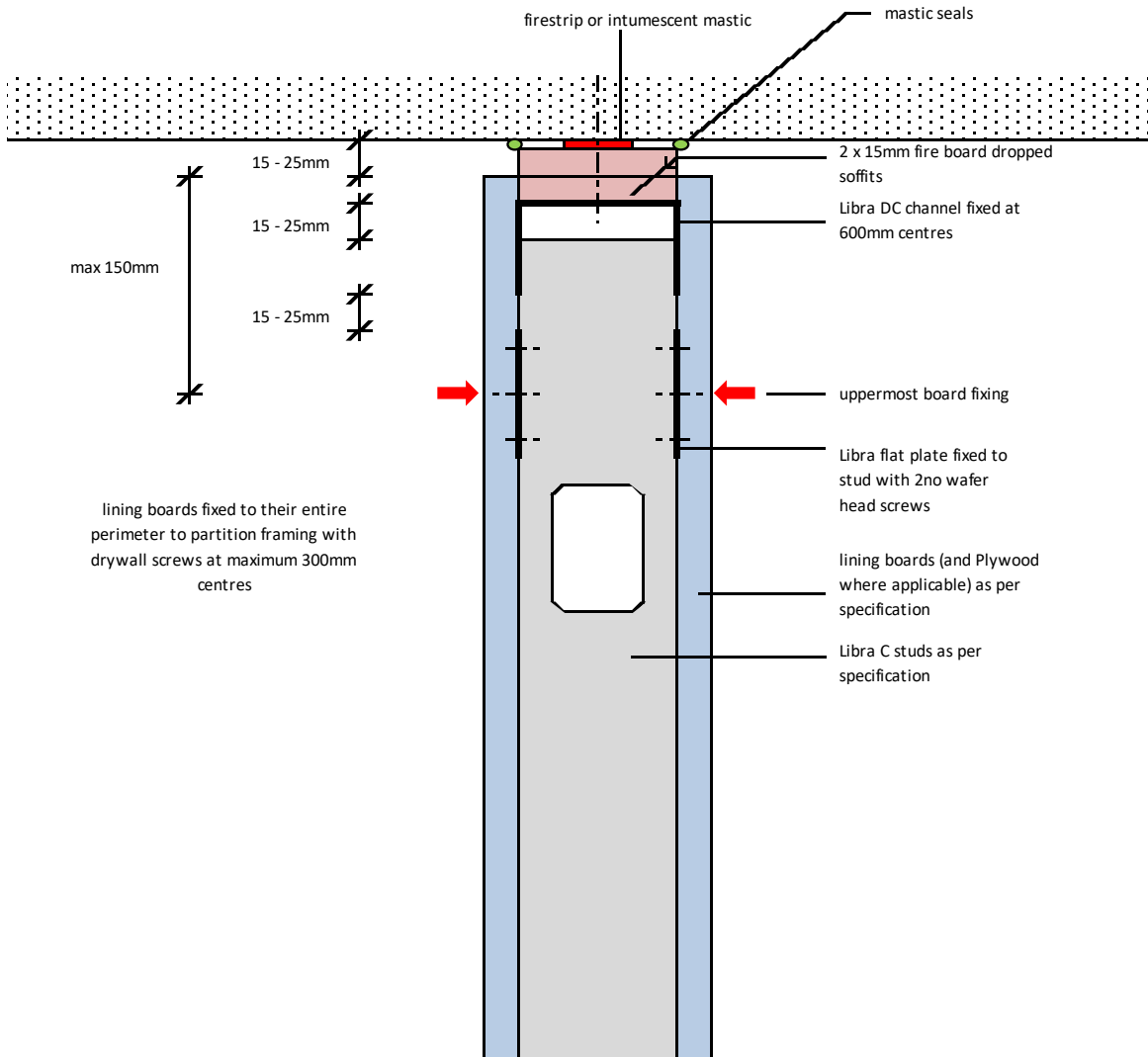
project:  
 Typical Detail

initials:  
 ML

date:  
 21/5/2017

drg no:  
 ML/TYP/002

**standard internal partition**  
**15 - 25mm / 30 or 60 minute deflection head**



Notes: This drawing should be read in conjunction with the relevant sections of the manufacturer's current product literature. We would draw your attention to the Construction (Design and Management) Regulations 1994 and the Approved Code of Practice which detail the legal duties of clients, client's agents, designers and contractors involved in construction projects.

for discussion purposes only / do not scale



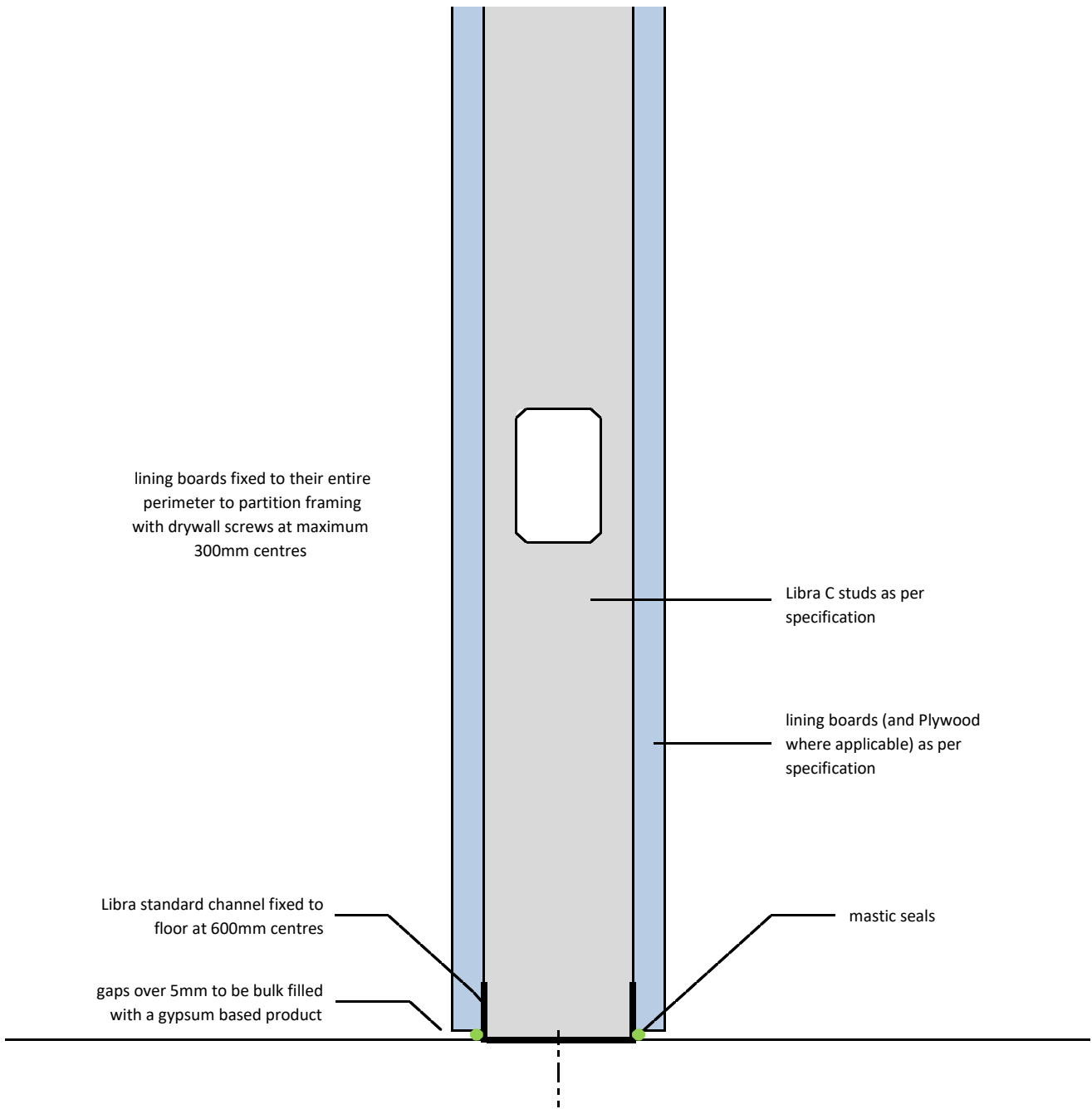
project: Typical Detail

initials: ML

date: 21/05/2017

drg no: ML/TYP/003

standard internal partition  
base detail



Notes: This drawing should be read in conjunction with the relevant sections of the manufacturers current product literature we would draw your attention to the Construction (Design and Management) Regulations 1994 and the Approved Code of Practice which detail the legal duties of clients, client's agents designers and contractors involved in construction projects.

for discussion purposes only / do not scale



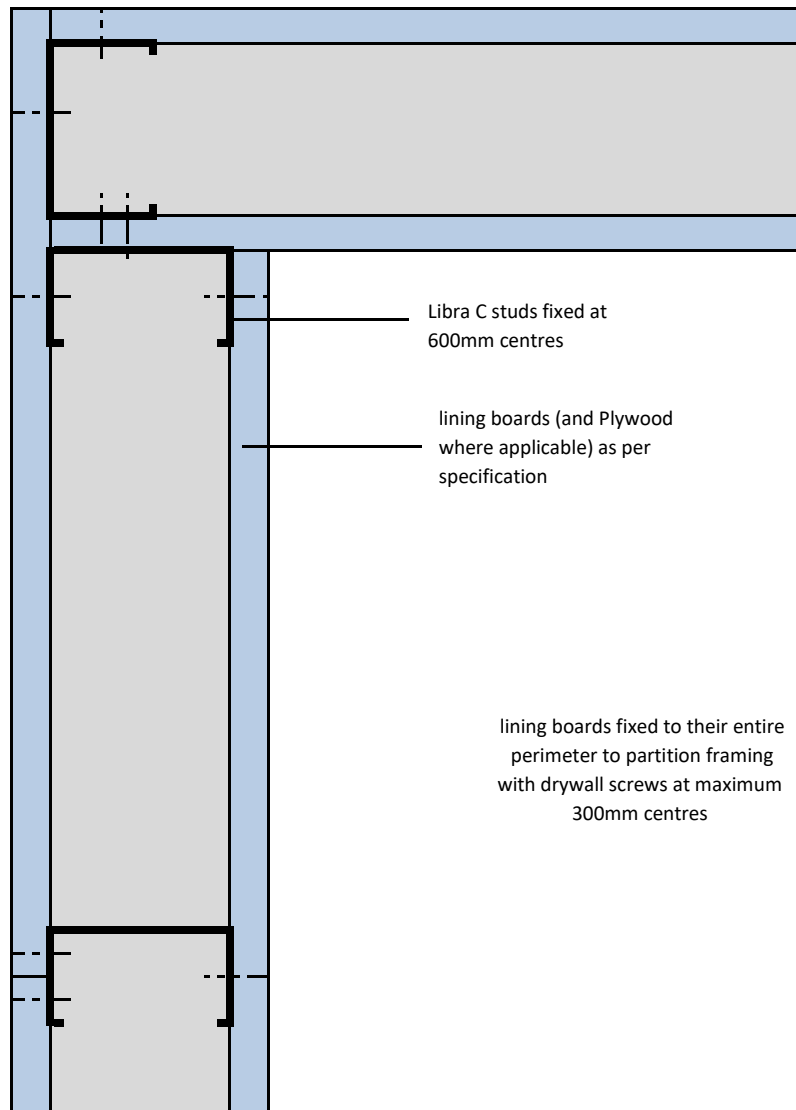
project:  
Typical Detail

initials:  
ML

date:  
21/5/2017

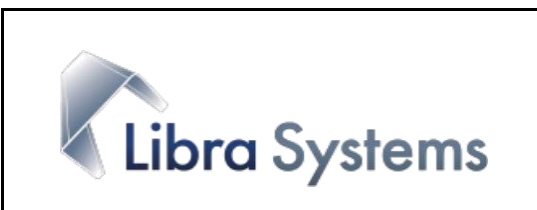
drg no:  
ML/TYP/004

standard internal partition  
internal and external corner detail



Notes: This drawing should be read in conjunction with the relevant sections of the manufacturers current product literature we would draw your attention to the Construction (Design and Management) Regulations 1994 and the Approved Code of Practice which detail the legal duties of clients, client's agents designers and contractors involved in construction projects.

for discussion purposes only / do not scale



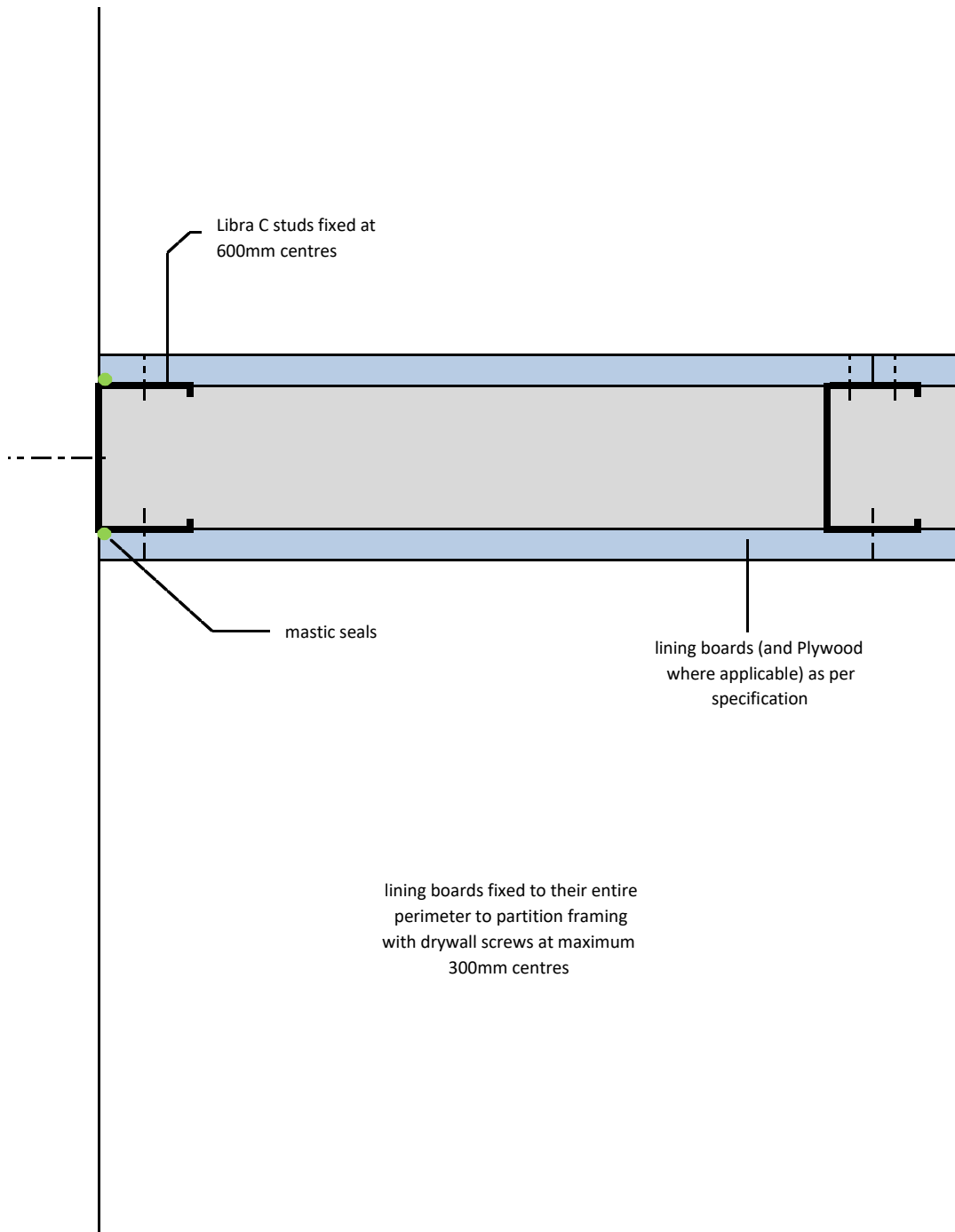
project:  
Typical Detail

initials:  
ML

date:  
21/5/2017

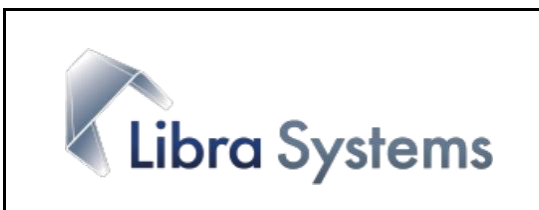
drg no:  
ML/TYP/005

standard internal partition  
abutment detail



Notes: This drawing should be read in conjunction with the relevant sections of the manufacturers current product literature we would draw your attention to the Construction (Design and Management) Regulations 1994 and the Approved Code of Practice which detail the legal duties of clients, client's agents designers and contractors involved in construction projects.

for discussion purposes only / do not scale



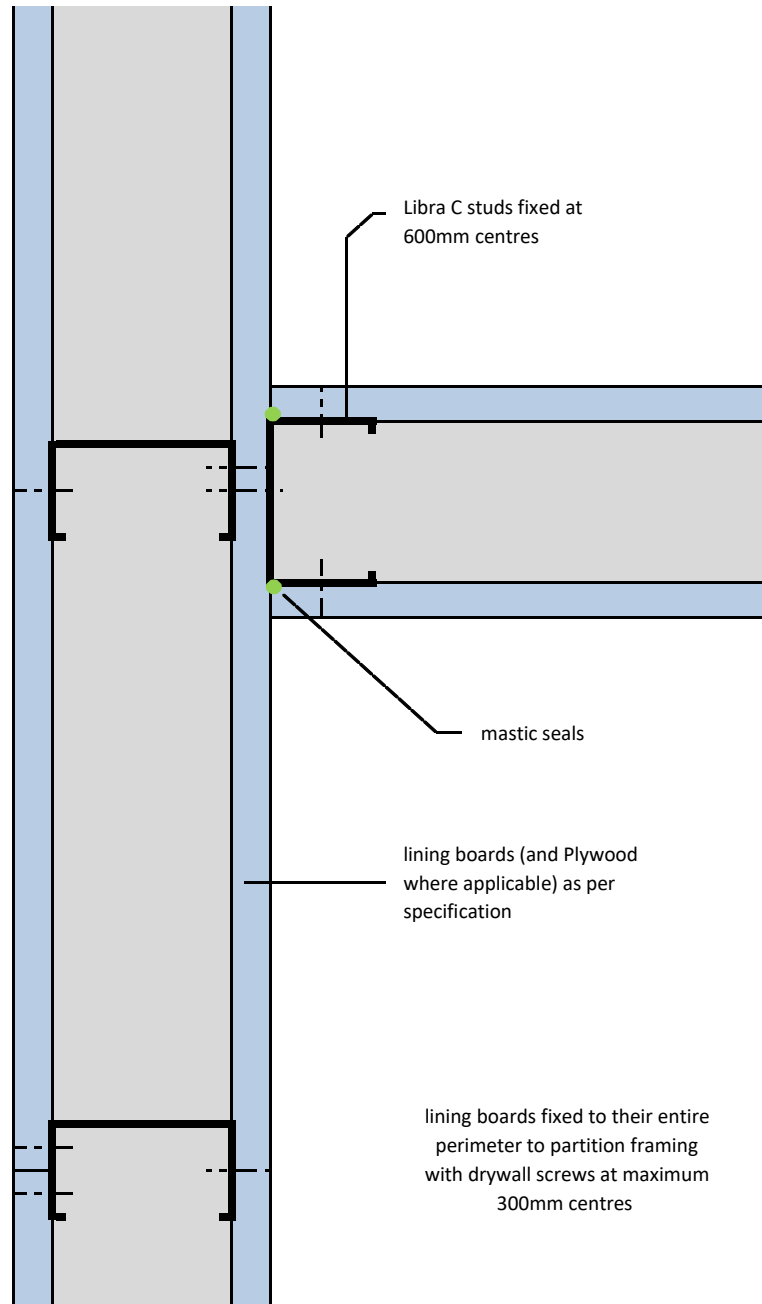
project:  
Typical Detail

initials:  
ML

date:  
21/5/2017

drg no:  
ML/TYP/006

standard internal partition  
T Junction



Notes: This drawing should be read in conjunction with the relevant sections of the manufacturers current product literature we would draw your attention to the Construction (Design and Management) Regulations 1994 and the Approved Code of Practice which detail the legal duties of clients, client's agents designers and contractors involved in construction projects.

for discussion purposes only / do not scale



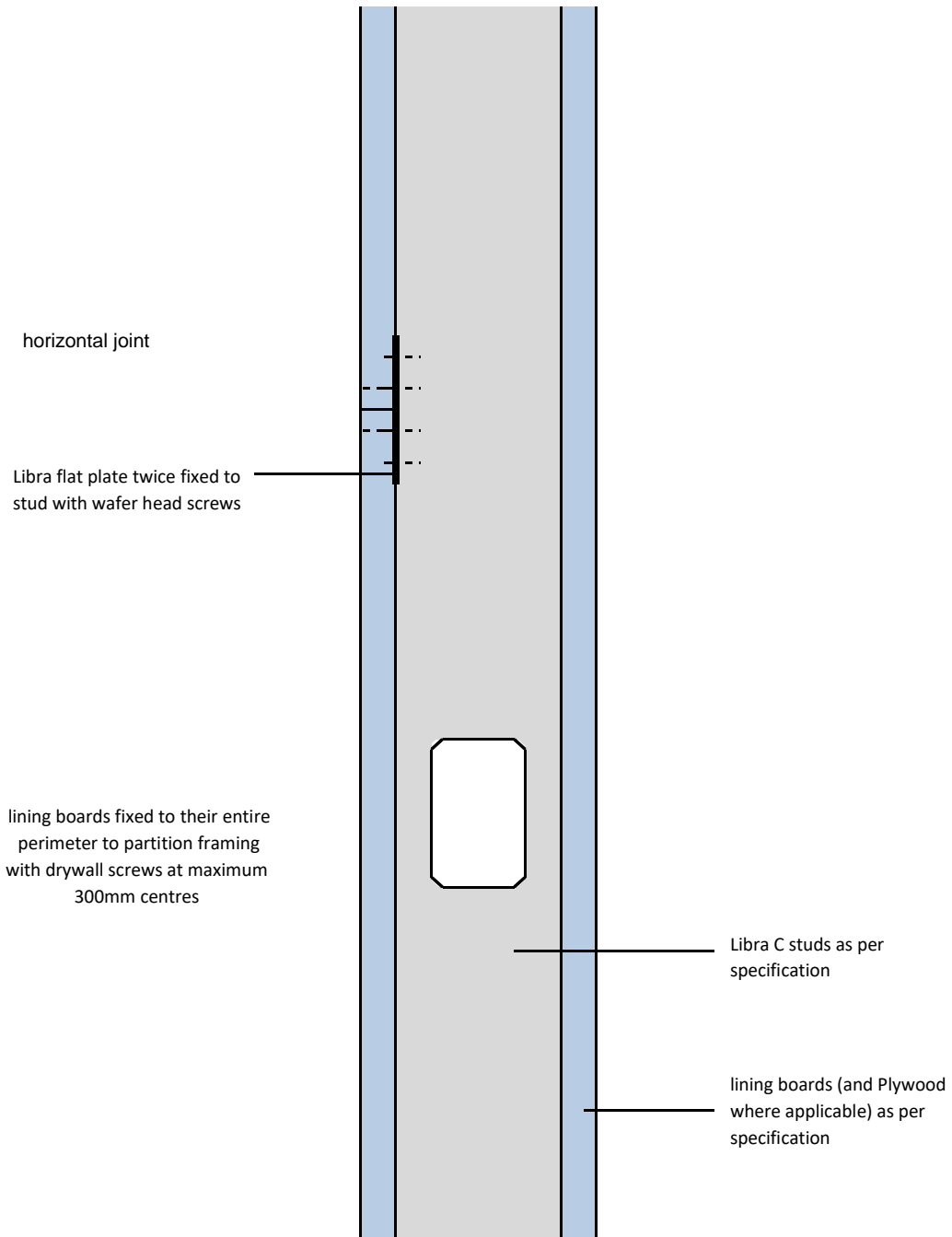
|          |                |
|----------|----------------|
| project: | Typical Detail |
|----------|----------------|

|           |
|-----------|
| initials: |
| ML        |

|           |
|-----------|
| date:     |
| 21/5/2017 |

|            |
|------------|
| drg no:    |
| ML/TYP/007 |

standard internal partition  
horizontal joint



Notes: This drawing should be read in conjunction with the relevant sections of the manufacturers current product literature we would draw your attention to the Construction (Design and Management) Regulations 1994 and the Approved Code of Practice which detail the legal duties of clients, client's agents designers and contractors involved in construction projects.

for discussion purposes only / do not scale



project:  
Typical Detail

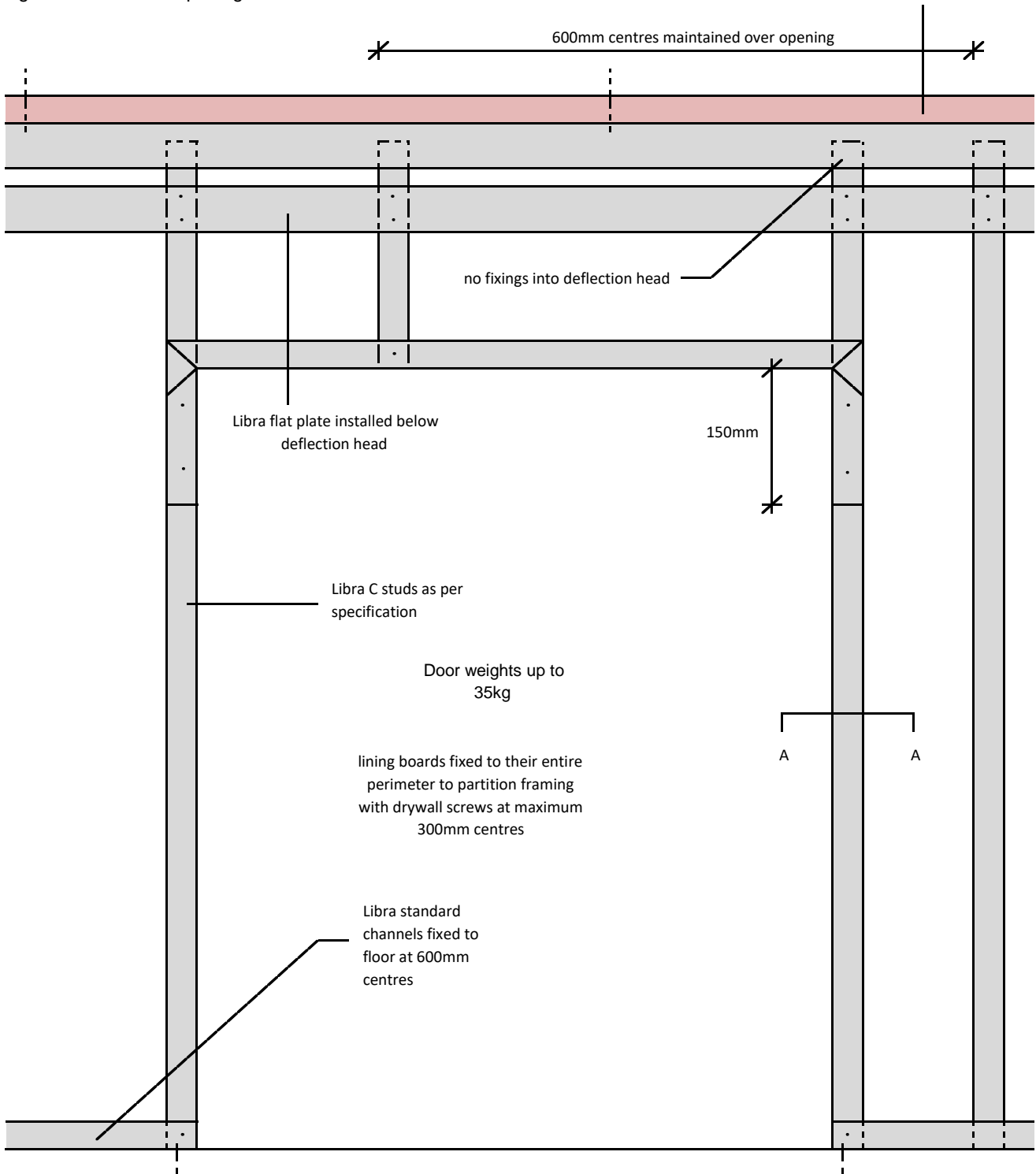
initials:  
ML

date:  
21/5/2017

drg no:  
ML/TYP/008

standard internal partition  
light / medium door opening

deflection head detail fixed to soffit at  
600mm centres



Notes: This drawing should be read in conjunction with the relevant sections of the manufacturers current product literature we would draw your attention to the Construction (Design and Management) Regulations 1994 and the Approved Code of Practice which detail the legal duties of clients, client's agents designers and contractors involved in construction projects.

for discussion purposes only / do not scale



project:

Typical Detail

initials:

ML

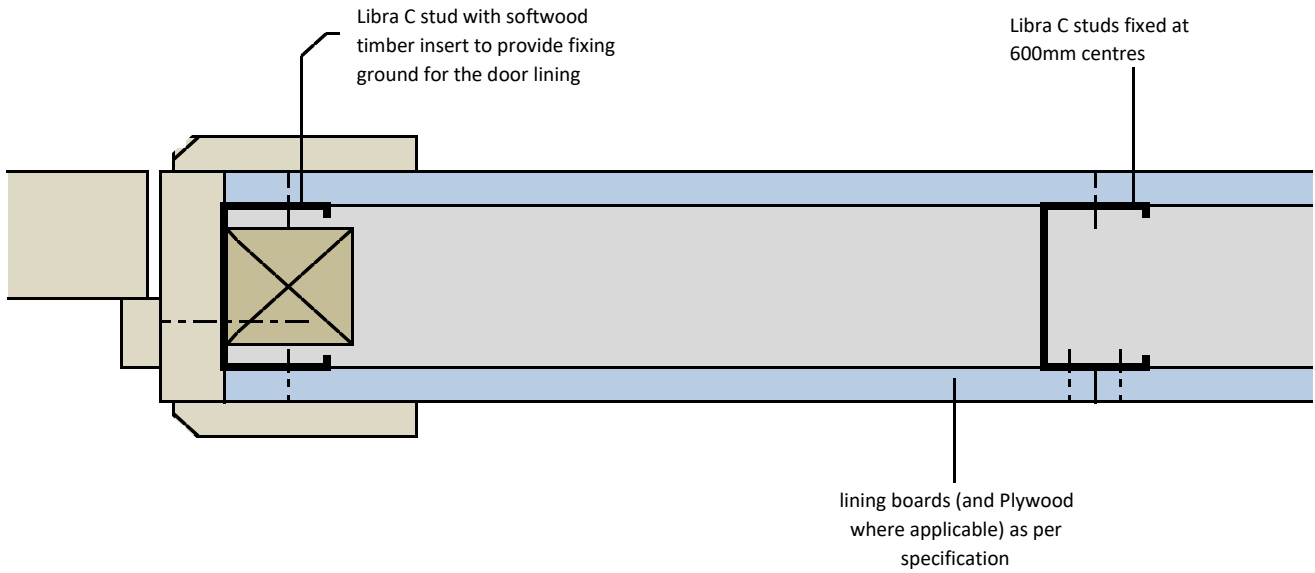
date:

21/5/2017

drg no:

ML/TYP/009

standard internal partition  
light / medium door opening - section AA



lining boards fixed to their entire perimeter to partition framing with drywall screws at maximum 300mm centres

Notes: This drawing should be read in conjunction with the relevant sections of the manufacturers current product literature we would draw your attention to the Construction (Design and Management) Regulations 1994 and the Approved Code of Practice which detail the legal duties of clients, client's agents designers and contractors involved in construction projects.

for discussion purposes only / do not scale



project:  
Typical Detail

initials:  
ML

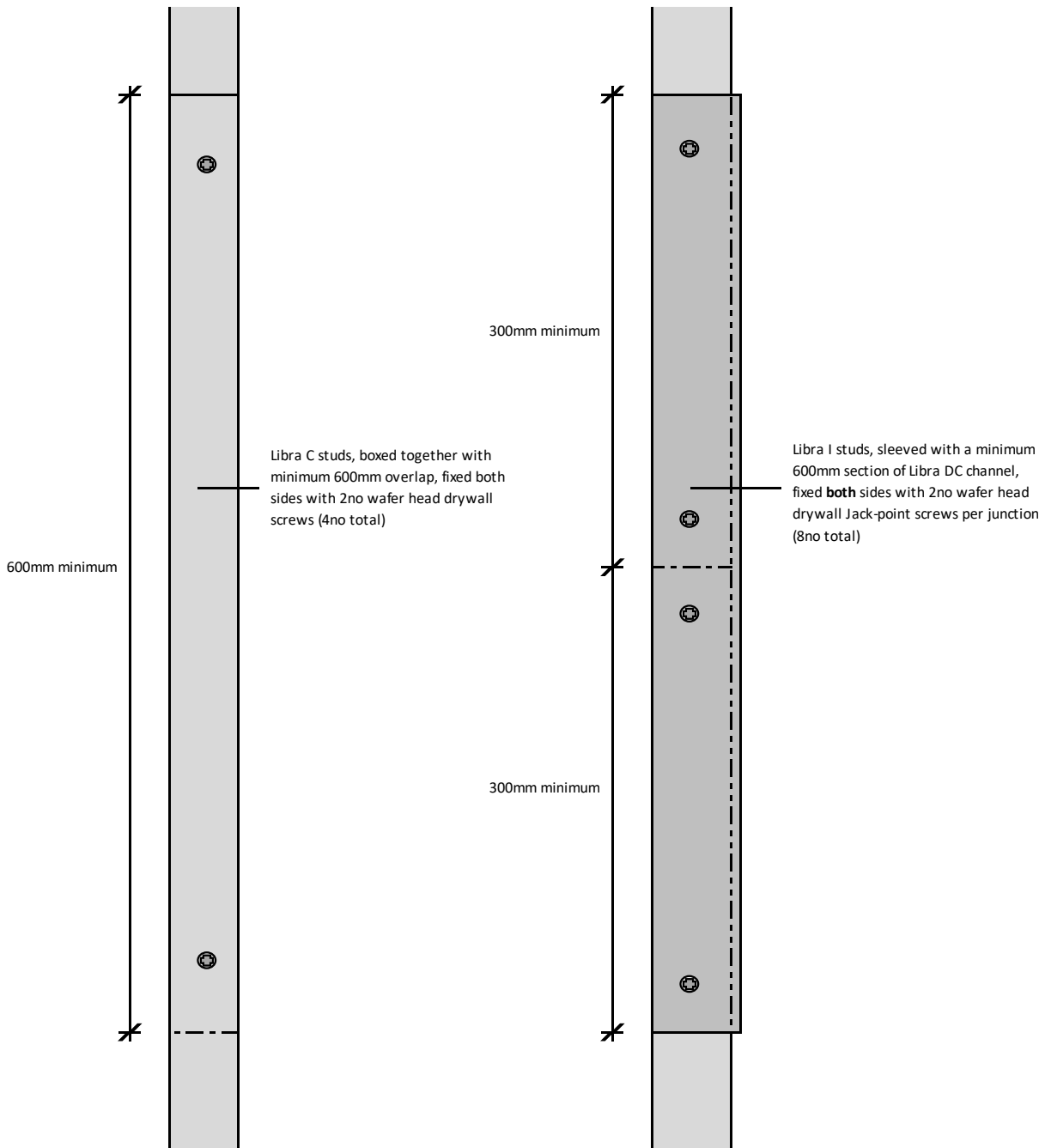
date:  
21/5/2107

drg no:  
ML/TYP/010

Libra C & I Stud Splicing Details

Libra C Studs

Libra I Studs



Notes: This drawing should be read in conjunction with the relevant sections of the manufacturer's current product literature. We would draw your attention to the Construction (Design and Management) Regulations 1994 and the Approved Code of Practice which detail the legal duties of clients, client's agents, designers and contractors involved in construction projects.

for discussion purposes only / do not scale



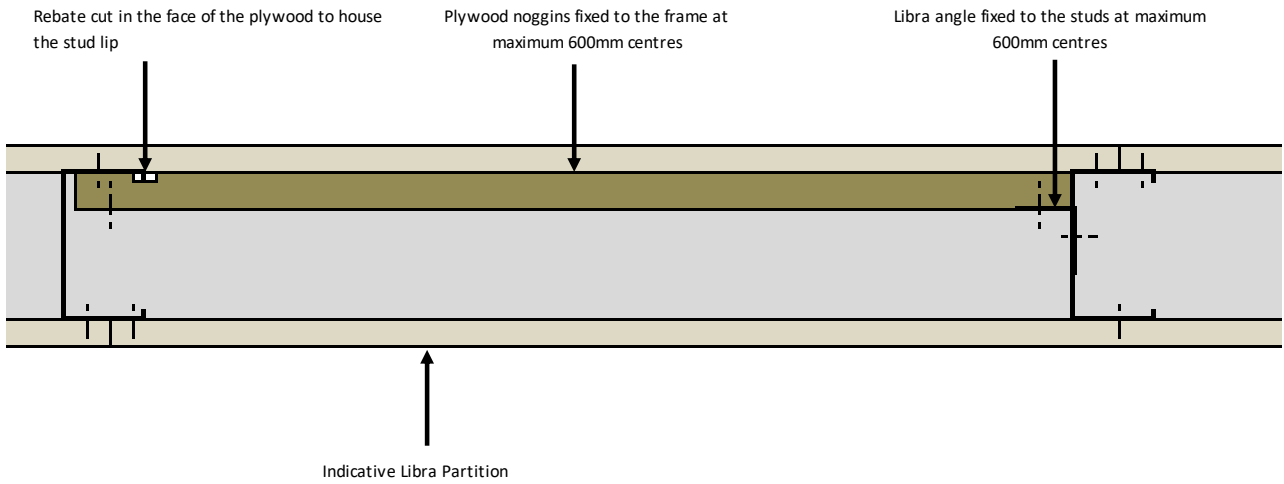
project: Libra Typical Details

initials: ML

date: 08/01/2020

drg no: ML/TYP/011

**Plywood Patresses**



Notes: This drawing should be read in conjunction with the relevant sections of the manufacturer's current product literature. We would draw your attention to the Construction (Design and Management) Regulations 1994 and the Approved Code of Practice which detail the legal duties of clients, client's agents, designers and contractors involved in construction projects.

for discussion purposes only / do not scale



|                                  |                     |                       |           |
|----------------------------------|---------------------|-----------------------|-----------|
| project:<br>Libra Example Detail |                     |                       |           |
| initials:<br>ML                  | date:<br>07/07/2023 | drg no:<br>ML/TYP/012 | Rev:<br>- |