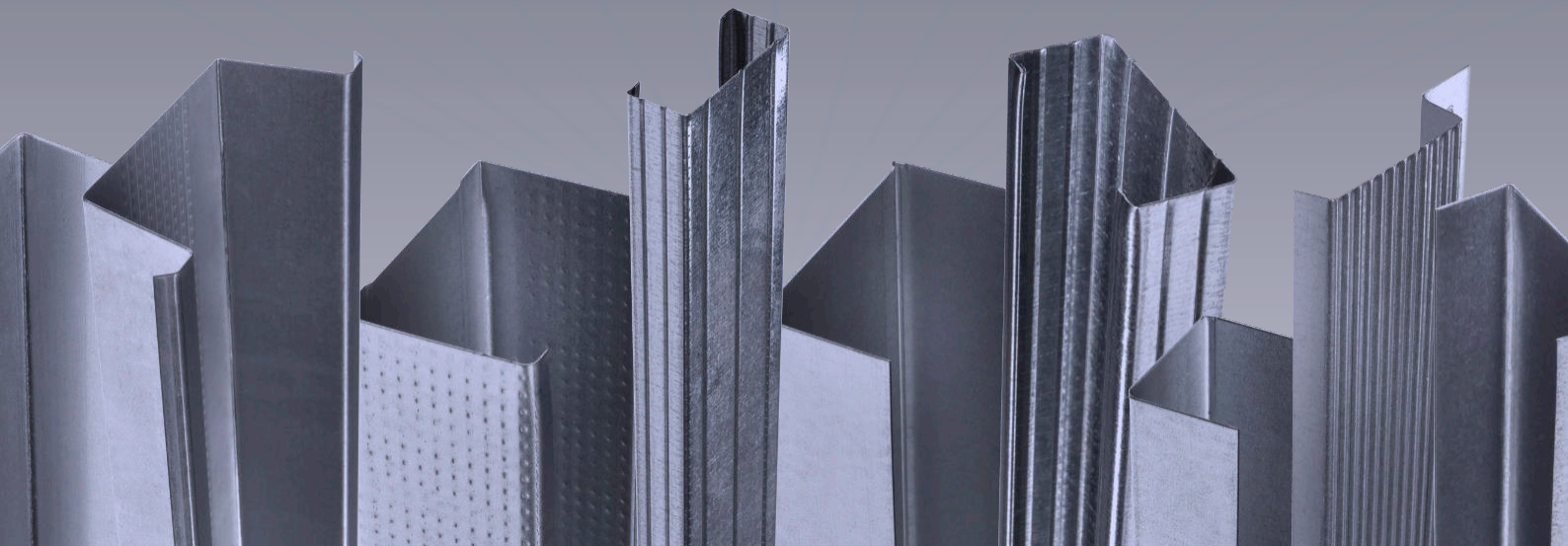




Internal Partitions - Independent Wall Lining

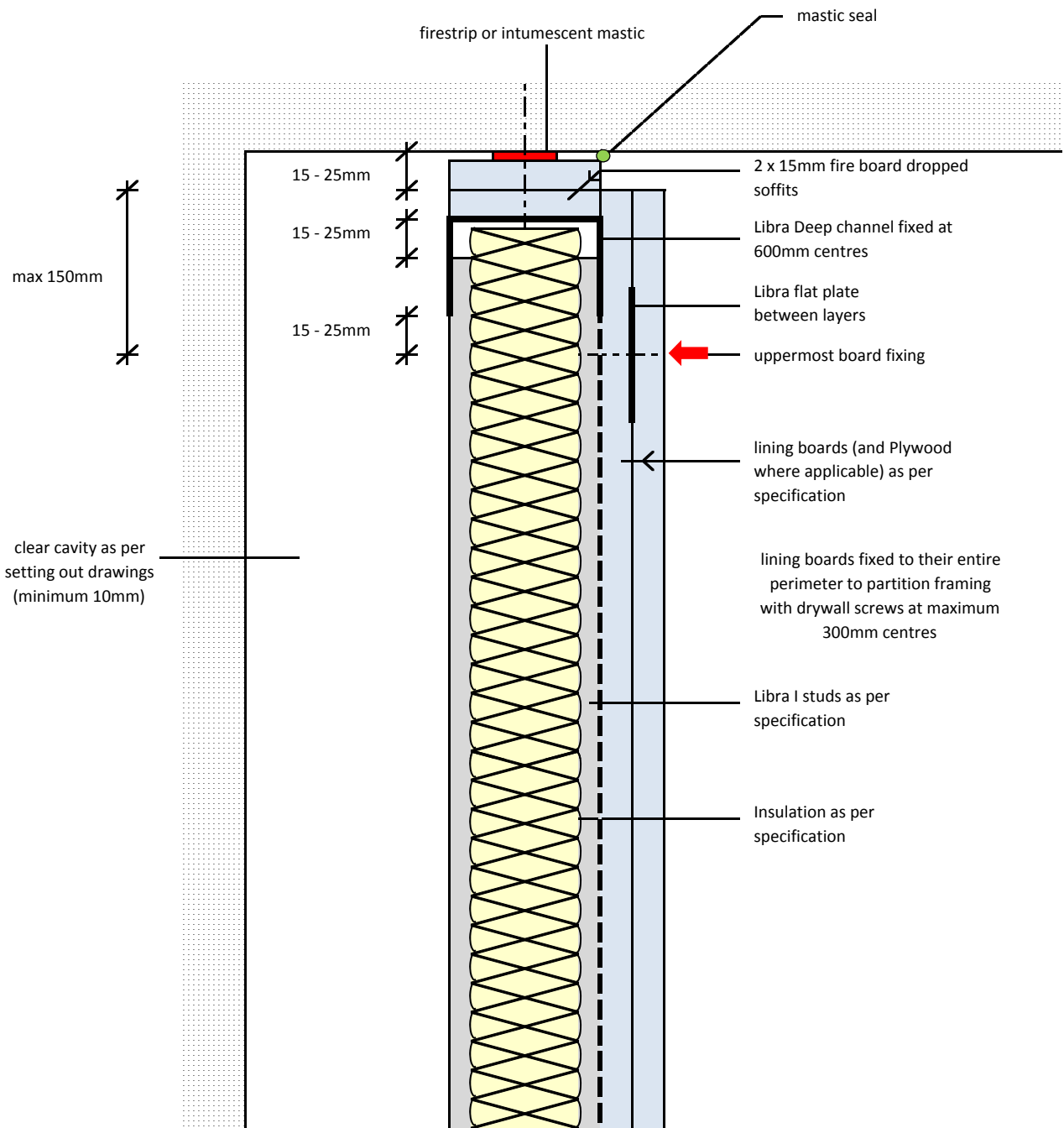


Contents

Metal Stud Partition System (Independent Wall Linings)

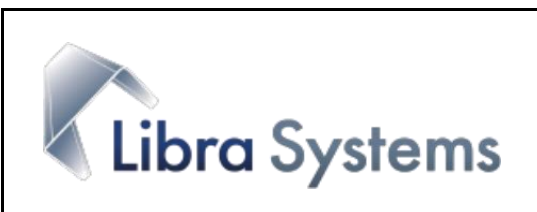
| | |
|------------|--|
| ML/TYP/100 | 15 - 25mm / 30 or 60 minute deflection |
| ML/TYP/101 | base detail |
| ML/TYP/102 | internal corner detail |
| ML/TYP/103 | external corner detail |
| ML/TYP/104 | abutment / partition abutment detail |
| ML/TYP/105 | horizontal joint |

independent wall lining
15 - 25mm / 30 or 60 minute deflection head



Notes: This drawing should be read in conjunction with the relevant sections of the manufacturers current product literature we would draw your attention to the Construction (Design and Management) Regulations 1994 and the Approved Code of Practice which detail the legal duties of clients, client's agents designers and contractors involved in construction projects.

for discussion purposes only / do not scale



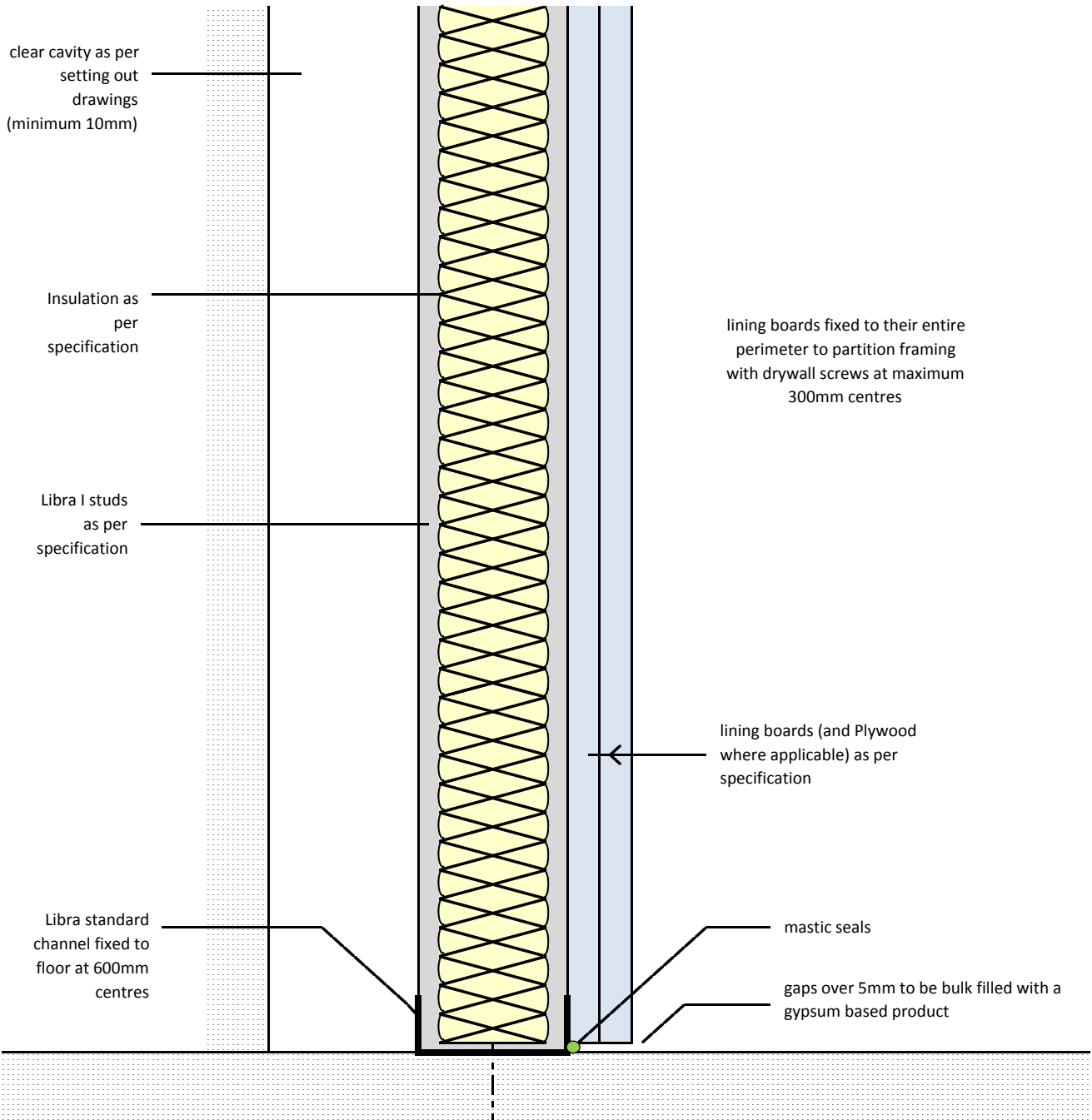
project: Typical Detail

initials: ML

date: 11/01/2017

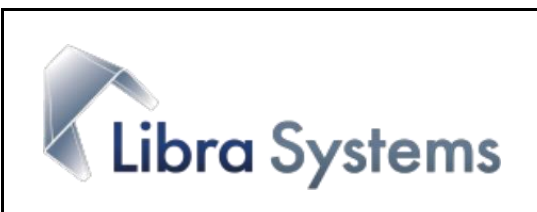
drg no: ML/TYP/100

**independent wall lining
base detail**



Notes: This drawing should be read in conjunction with the relevant sections of the manufacturers current product literature we would draw your attention to the Construction (Design and Management) Regulations 1994 and the Approved Code of Practice which detail the legal duties of clients, client's agents designers and contractors involved in construction projects.

for discussion purposes only / do not scale



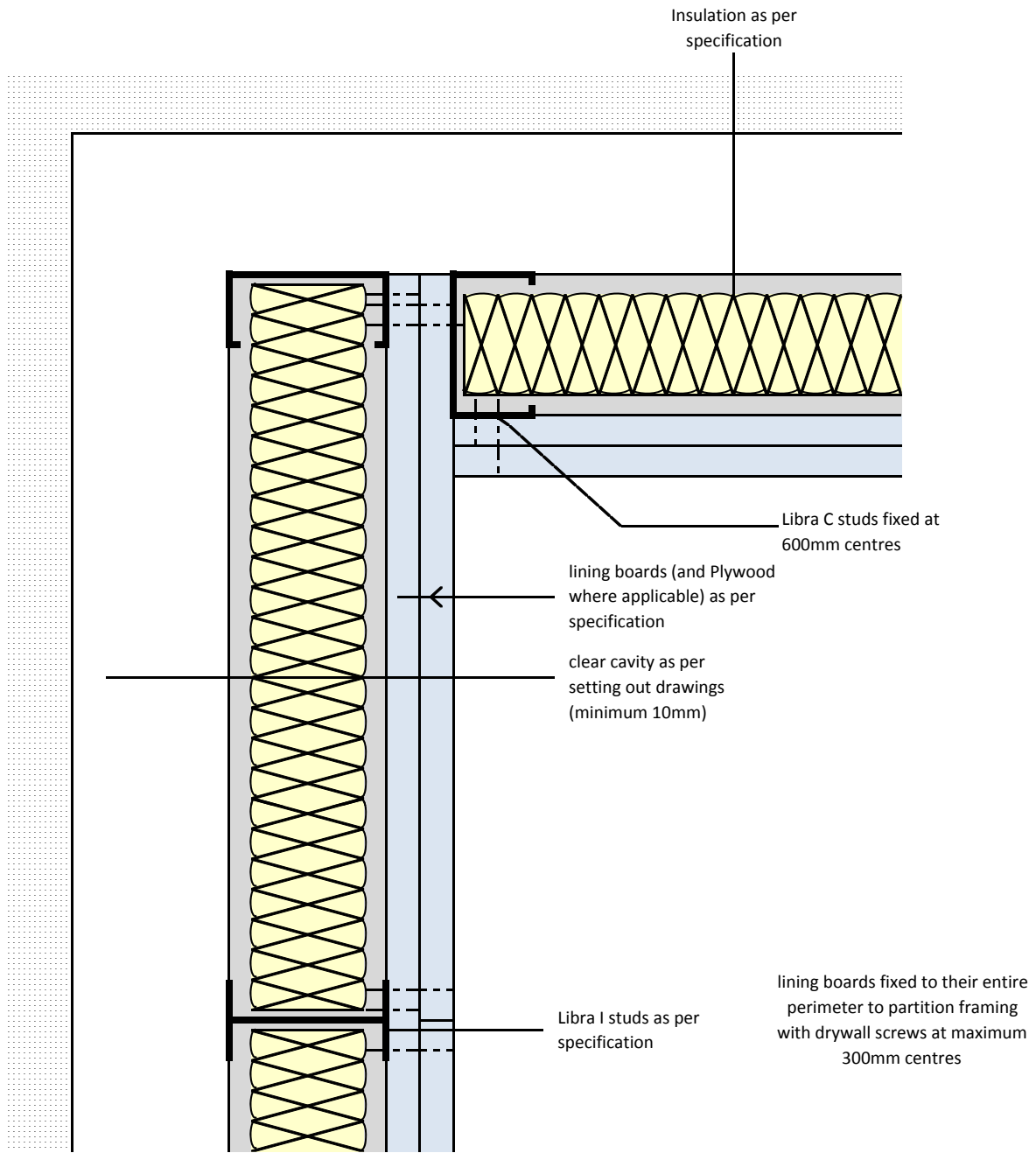
| | | |
|----------|----------------|--|
| project: | Typical Detail | |
|----------|----------------|--|

| | |
|-----------|----|
| initials: | ML |
|-----------|----|

| | |
|-------|------------|
| date: | 11/01/2017 |
|-------|------------|

| | |
|---------|------------|
| drg no: | ML/TYP/101 |
|---------|------------|

**independent wall lining
internal corner detail**



Notes: This drawing should be read in conjunction with the relevant sections of the manufacturers current product literature we would draw your attention to the Construction (Design and Management) Regulations 1994 and the Approved Code of Practice which detail the legal duties of clients, client's agents designers and contractors involved in construction projects.

for discussion purposes only / do not scale



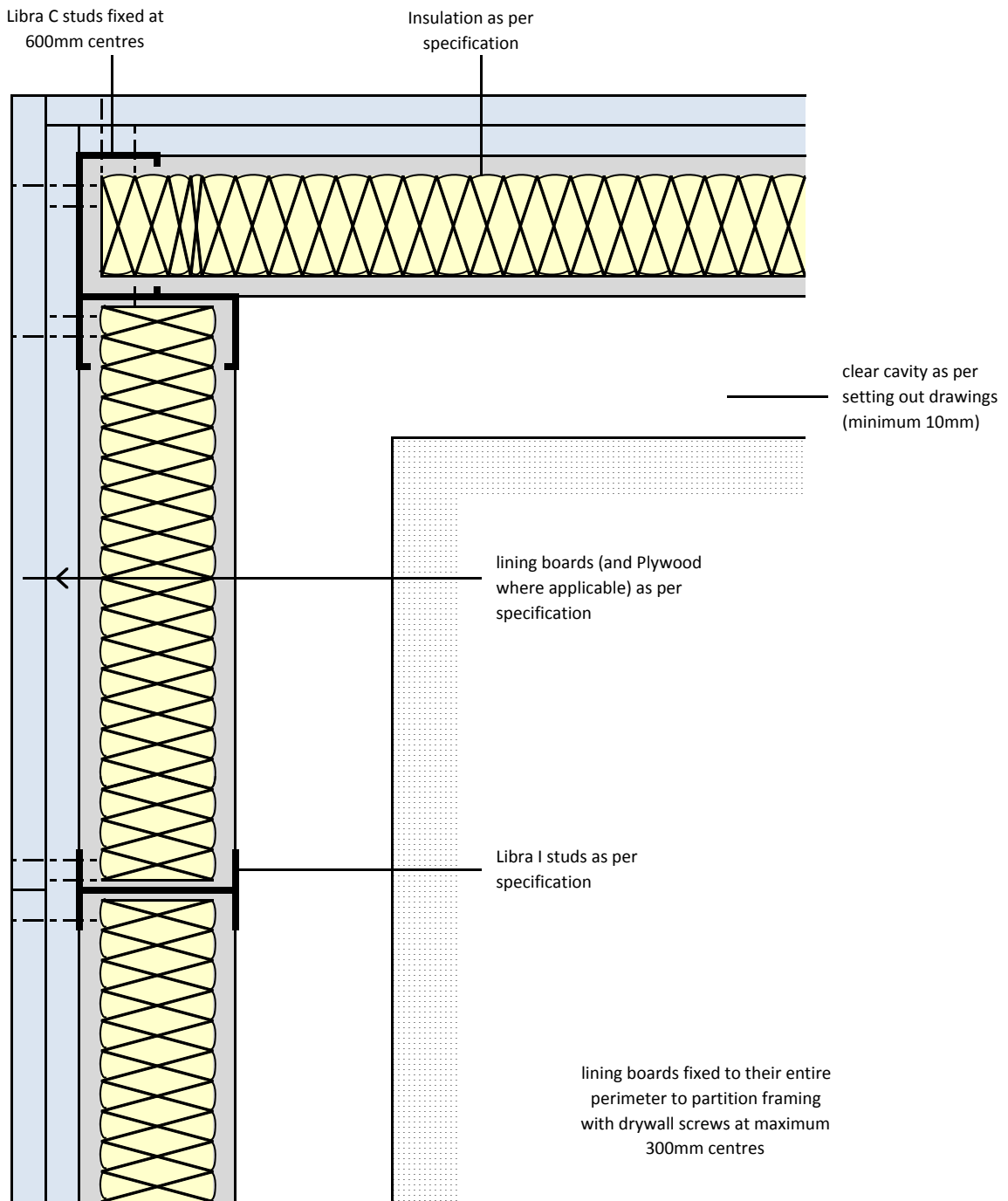
project:
Typical Detail

initials:
ML

date:
11/01/2017

drg no:
ML/TYP/102

**independent wall lining
external corner detail**



Notes: This drawing should be read in conjunction with the relevant sections of the manufacturers current product literature we would draw your attention to the Construction (Design and Management) Regulations 1994 and the Approved Code of Practice which detail the legal duties of clients, client's agents designers and contractors involved in construction projects.

for discussion purposes only / do not scale



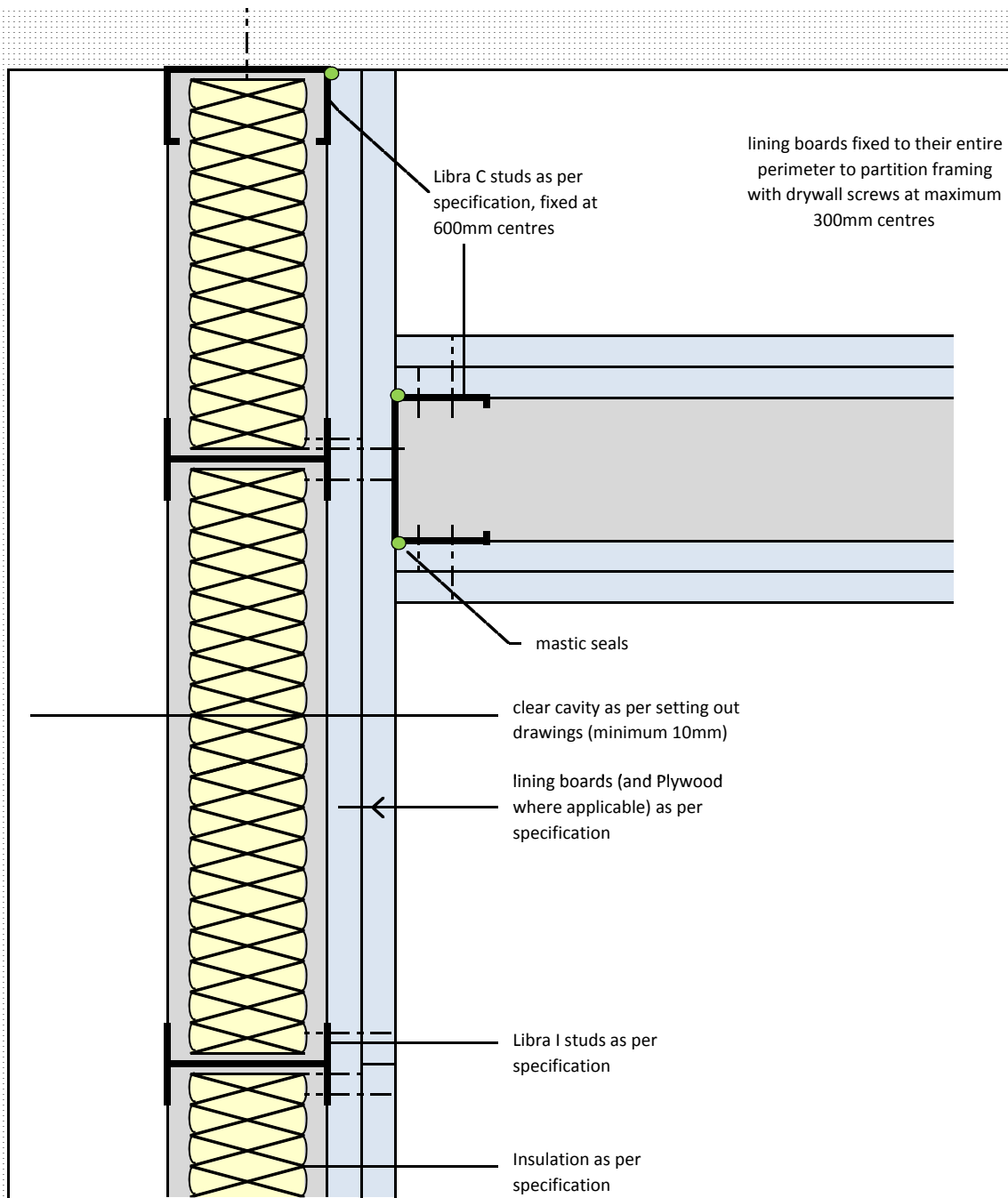
| | | |
|----------|----------------|--|
| project: | Typical Detail | |
|----------|----------------|--|

| | |
|-----------|----|
| initials: | ML |
|-----------|----|

| | |
|-------|------------|
| date: | 11/01/2017 |
|-------|------------|

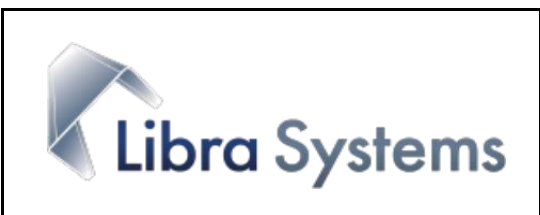
| | |
|---------|------------|
| drg no: | ML/TYP/103 |
|---------|------------|

**independent wall lining
abutment / partition abutment**



Notes: This drawing should be read in conjunction with the relevant sections of the manufacturers current product literature we would draw your attention to the Construction (Design and Management) Regulations 1994 and the Approved Code of Practice which detail the legal duties of clients, client's agents designers and contractors involved in construction projects.

for discussion purposes only / do not scale



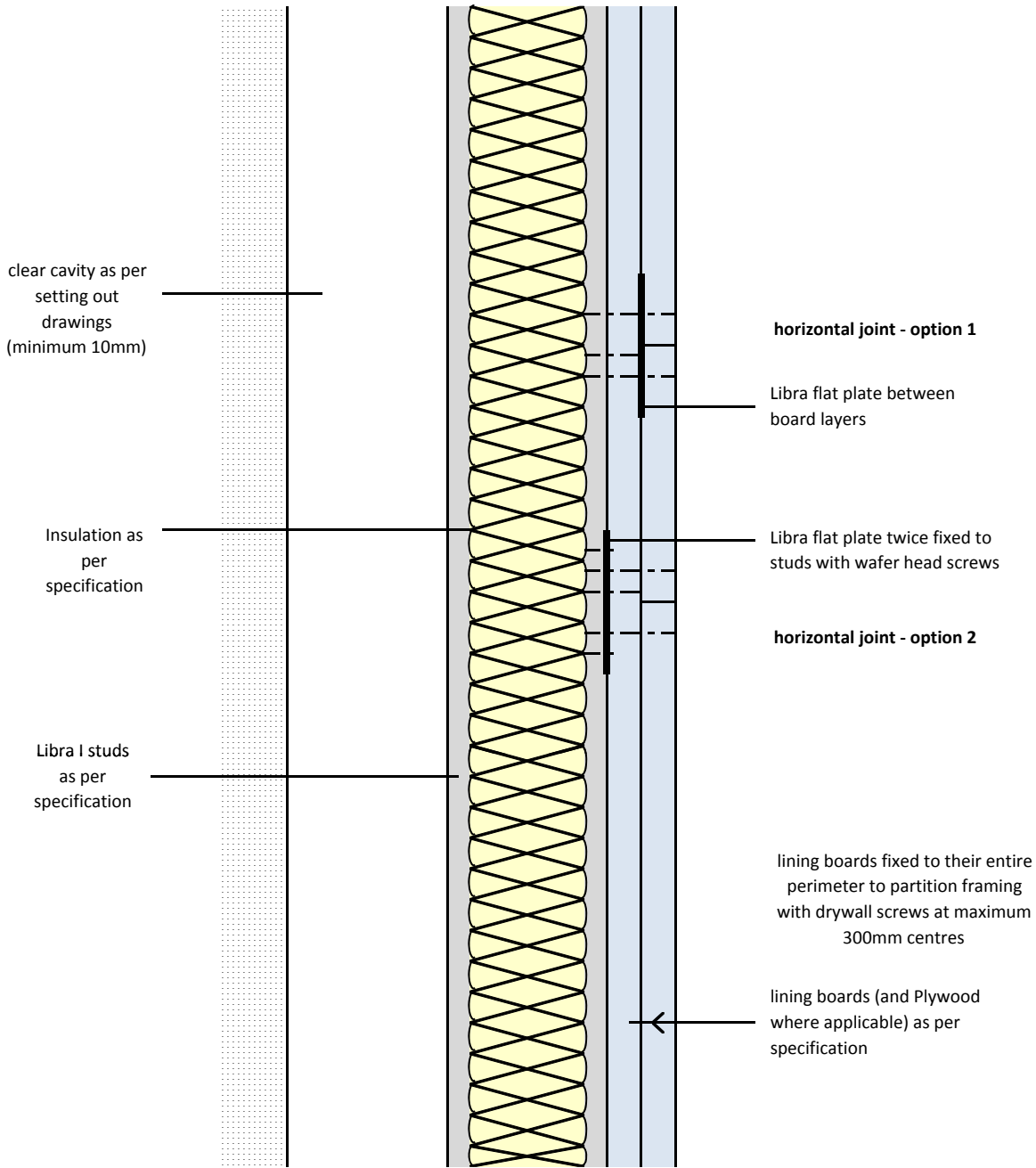
project: Typical Detail

initials:
ML

date:
11/01/2017

drg no:
ML/TYP/104

**independent wall lining
horizontal joint**



Notes: This drawing should be read in conjunction with the relevant sections of the manufacturers current product literature we would draw your attention to the Construction (Design and Management) Regulations 1994 and the Approved Code of Practice which detail the legal duties of clients, client's agents designers and contractors involved in construction projects.

for discussion purposes only / do not scale



| | | |
|----------------|------------|------------|
| project: | | |
| Typical Detail | | |
| initials: | date: | drg no: |
| ML | 11/01/2017 | ML/TYP/105 |