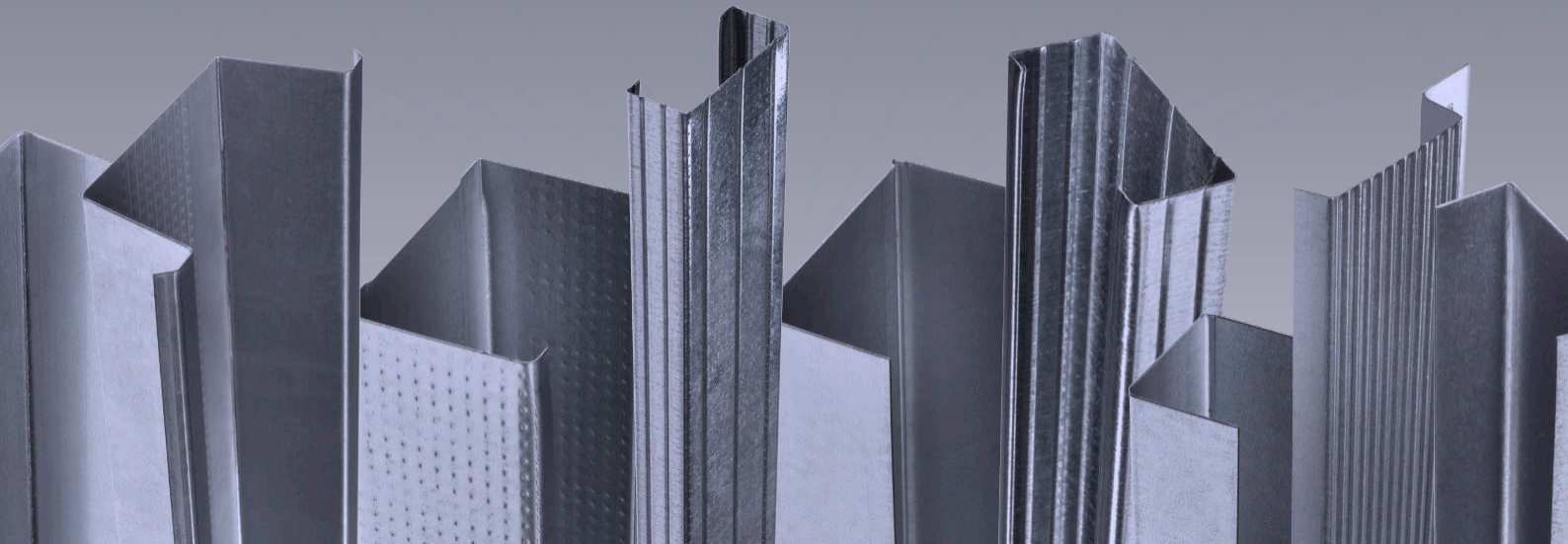




Internal Partitions - Braced Wall Lining Details

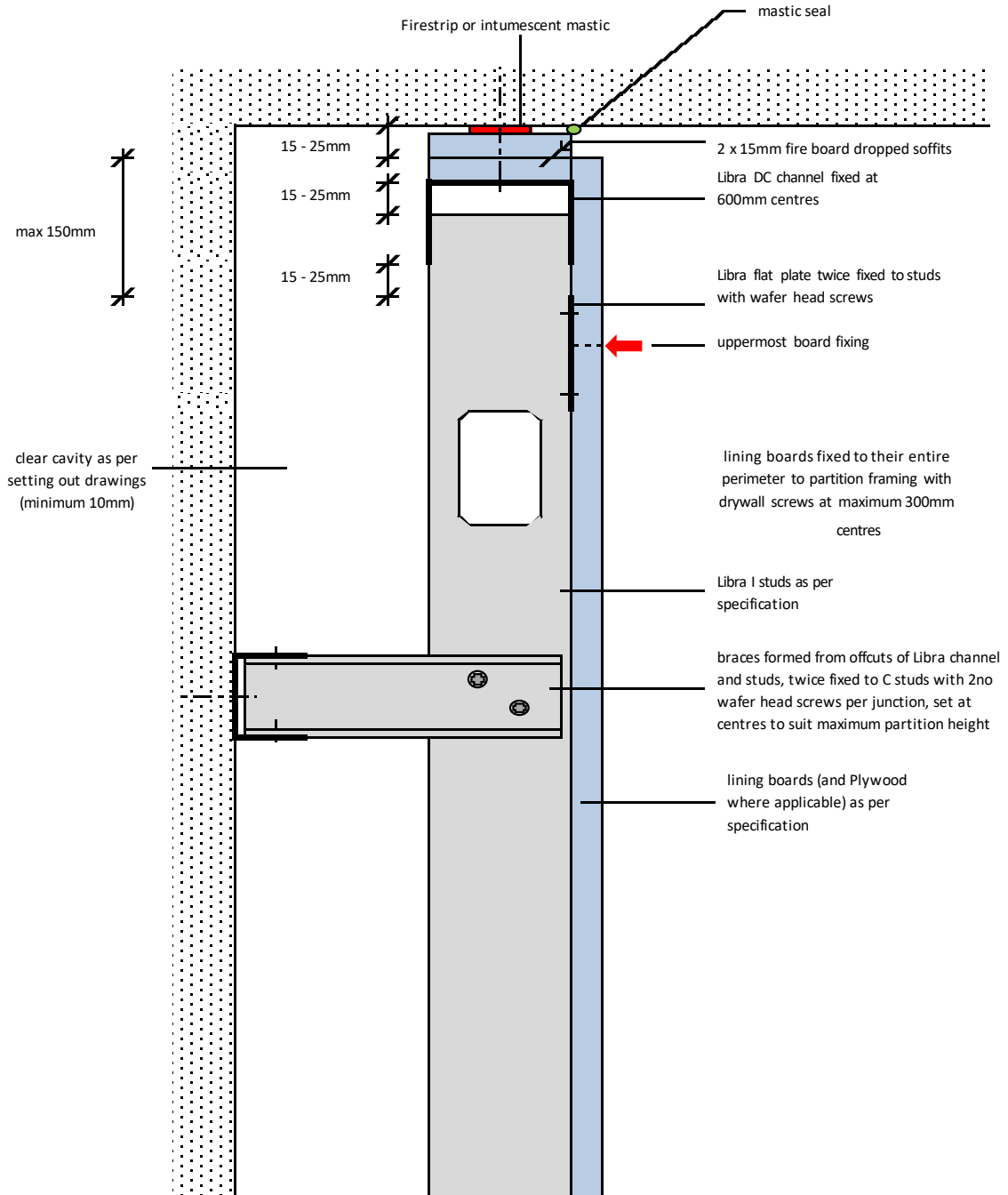


Contents

Metal Stud Partition System (Braced Wall Linings)

ML/TYP/150	15 - 25mm / 30 or 60 minute deflection
ML/TYP/151	15- 25mm / non fire rated deflection
ML/TYP/152	external corner detail
ML/TYP/153	horizontal joint
ML/TYP/154	internal corner detail
ML/TYP/155	base detail
ML/TYP/156	abutment / partition abutment detail

Independent Wall Lining (Braced)
15 - 25mm / 30 or 60 Minute Deflection Head



Notes: This drawing should be read in conjunction with the relevant sections of the manufacturers current product literature we would draw your attention to the Construction (Design and Management) Regulations 1994 and the Approved Code of Practice which detail the legal duties of clients, client's agents designers and contractors involved in construction projects.

for discussion purposes only / do not scale



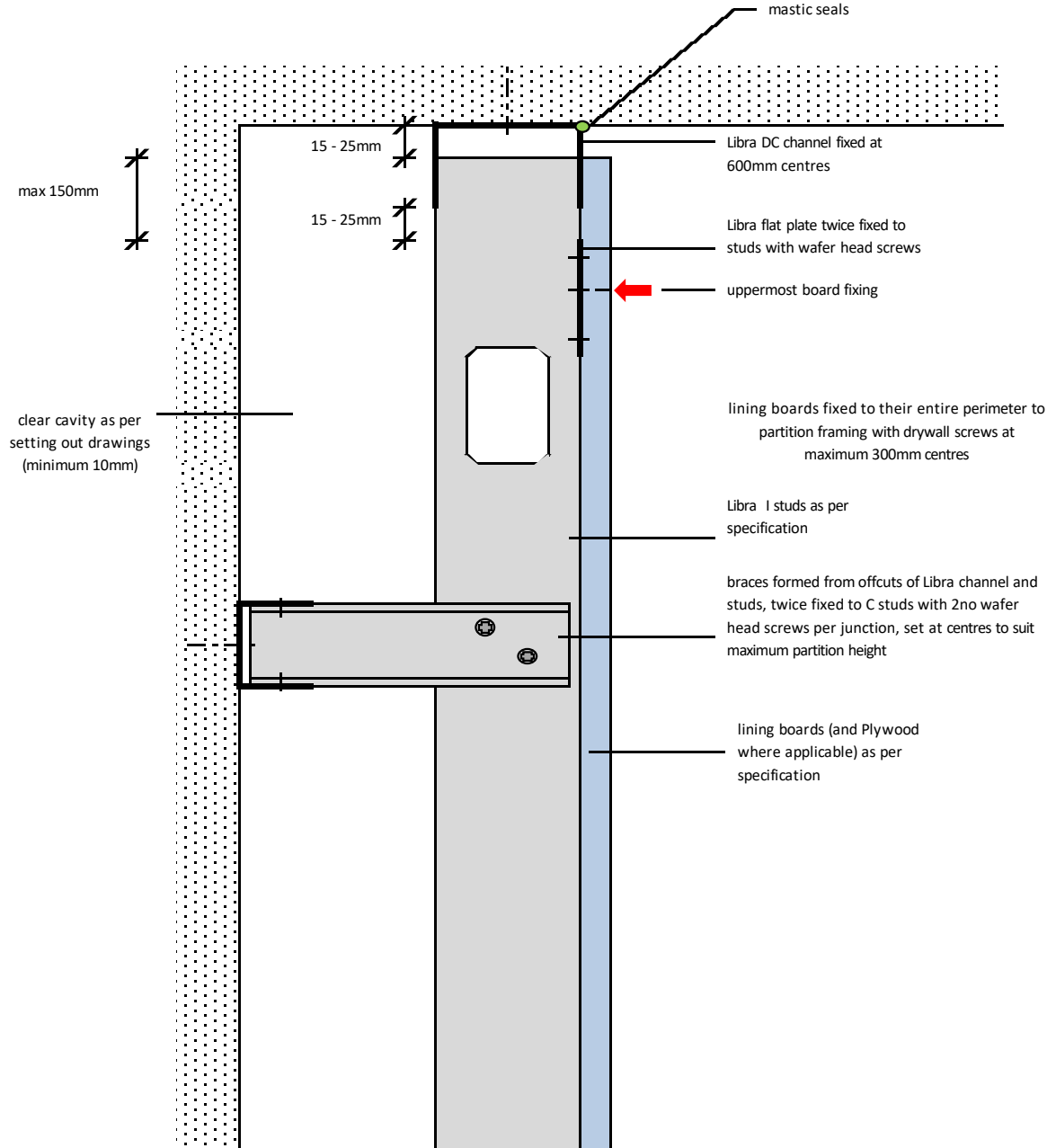
project: Typical Details

initials: ML

date: 03/07/2018

drg no: ML/TYP/150

Independent Wall Lining (Braced)
15 - 25mm / Non Fire Rated Deflection Head



Notes: This drawing should be read in conjunction with the relevant sections of the manufacturer's current product literature. We would draw your attention to the Construction (Design and Management) Regulations 1994 and the Approved Code of Practice which detail the legal duties of clients, client's agents, designers and contractors involved in construction projects.

for discussion purposes only / do not scale



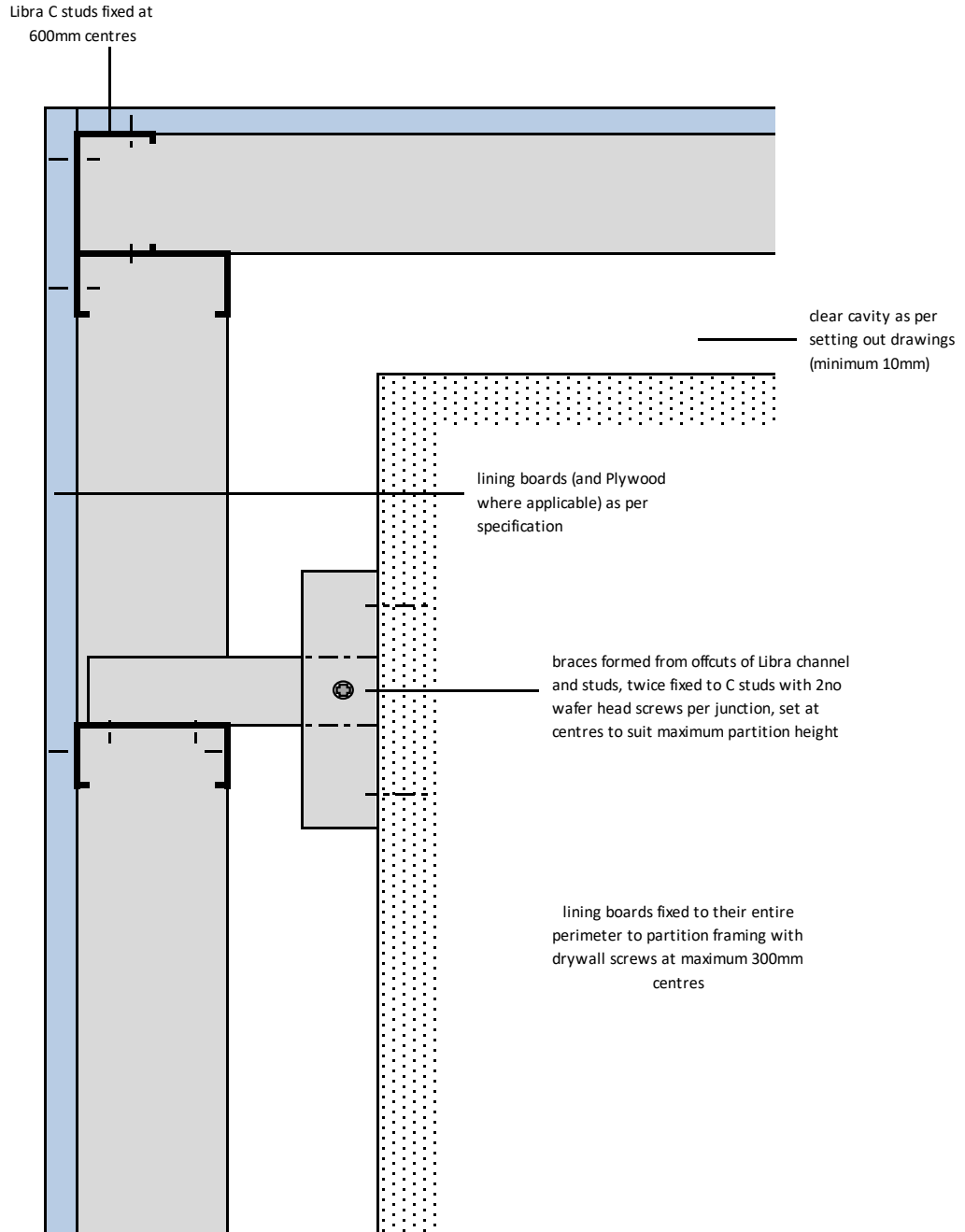
project: Typical Details

initials: ML

date: 03/07/2018

drg no: ML/TYP/151

**Independent Wall Lining (Braced)
External Corner**



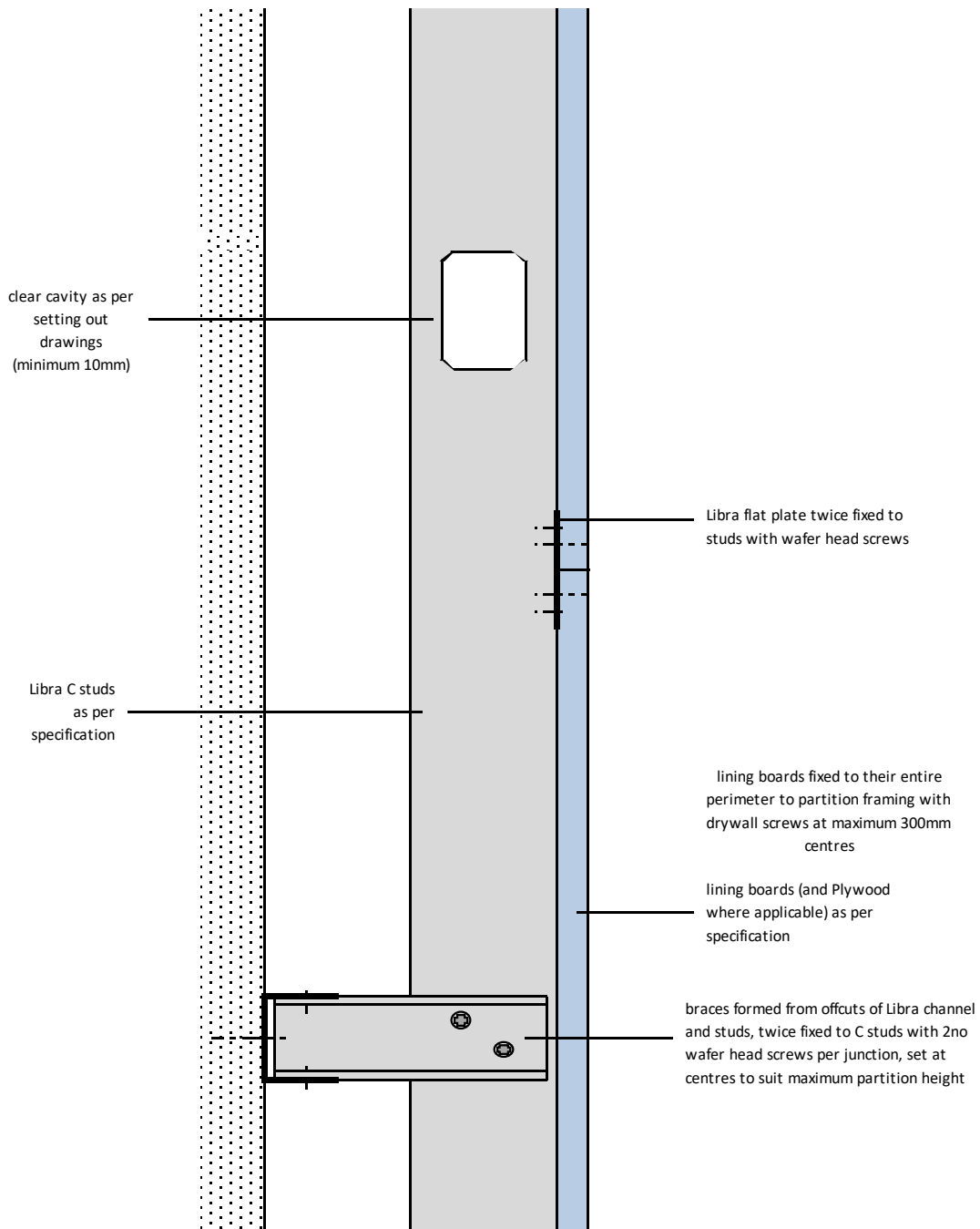
Notes: This drawing should be read in conjunction with the relevant sections of the manufacturers current product literature we would draw your attention to the Construction (Design and Management) Regulations 1994 and the Approved Code of Practice which detail the legal duties of clients, client's agents designers and contractors involved in construction projects.

for discussion purposes only / do not scale



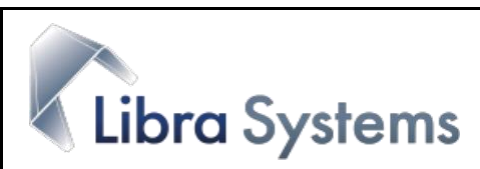
project:			Typical Details		
initials:	date:	drg no:			
ML	03/07/2018	ML/TYP/152			

Independent Wall Lining (Braced)
Horizontal Joint



Notes: This drawing should be read in conjunction with the relevant sections of the manufacturer's current product literature. We would draw your attention to the Construction (Design and Management) Regulations 1994 and the Approved Code of Practice which detail the legal duties of clients, client's agents, designers and contractors involved in construction projects.

for discussion purposes only / do not scale



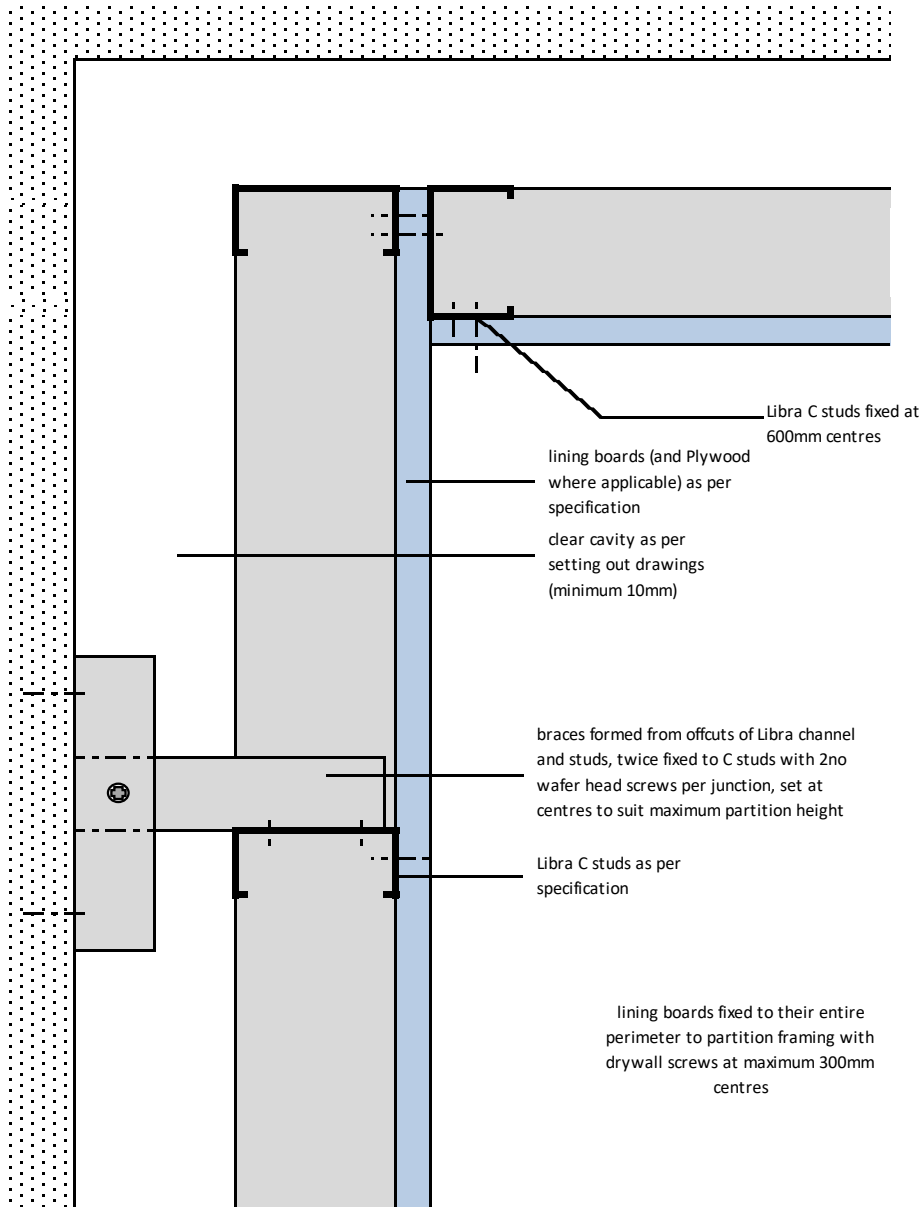
project:	Typical Details
----------	-----------------

initials: ML

date: 03/07/2018

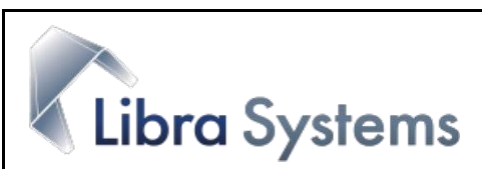
drg no: ML/TYP/153

Independent Wall Lining (Braced)
Internal Corner



Notes: This drawing should be read in conjunction with the relevant sections of the manufacturer's current product literature we would draw your attention to the Construction (Design and Management) Regulations 1994 and the Approved Code of Practice which detail the legal duties of clients, client's agents designers and contractors involved in construction projects.

for discussion purposes only / do not scale



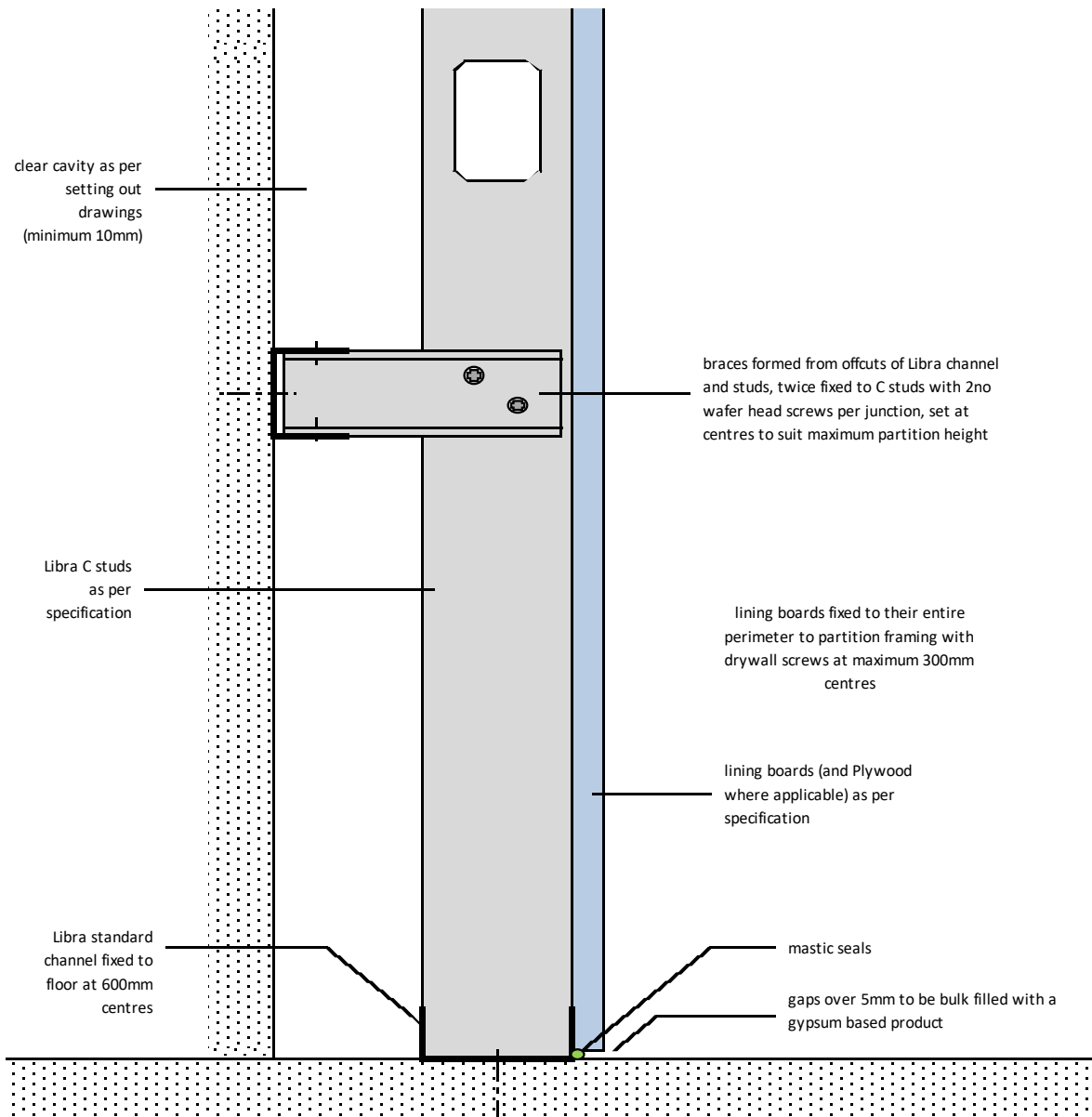
project: Typical Details

initials: ML

date: 03/07/2018

drg no: ML/TYP/154

**Independent Wall Lining (Braced)
Base Detail**



Notes: This drawing should be read in conjunction with the relevant sections of the manufacturer's current product literature we would draw your attention to the Construction (Design and Management) Regulations 1994 and the Approved Code of Practice which detail the legal duties of clients, client's agents designers and contractors involved in construction projects.

for discussion purposes only / do not scale



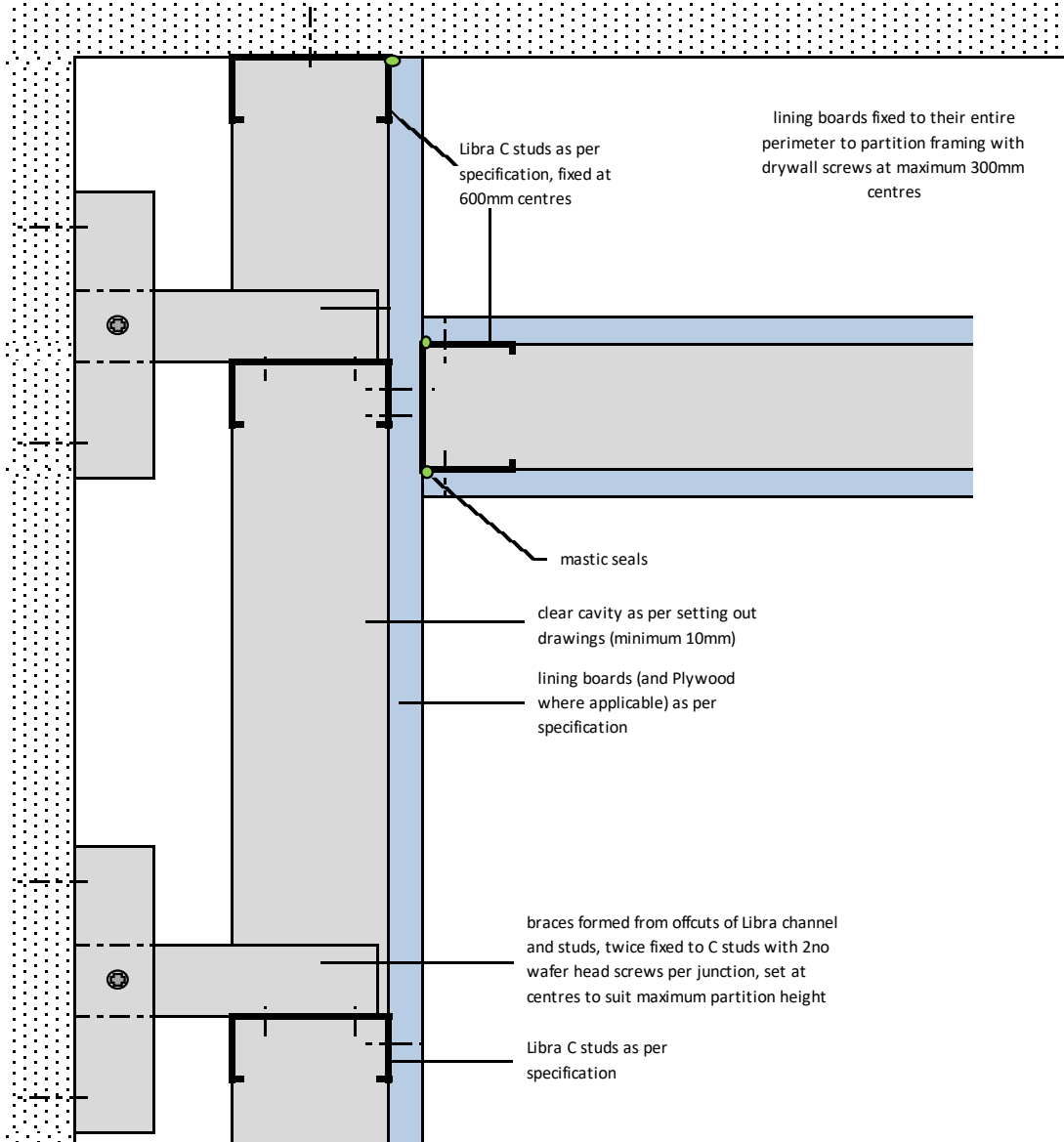
project: Typical Details

initials:
ML

date:
03/07/2018

drg no:
ML/TYP/155

**Independent Wall Lining (Braced)
Abutment / Partition Abutment**



Notes: This drawing should be read in conjunction with the relevant sections of the manufacturer's current product literature. We would draw your attention to the Construction (Design and Management) Regulations 1994 and the Approved Code of Practice which detail the legal duties of clients, client's agents, designers and contractors involved in construction projects.

for discussion purposes only / do not scale



project:	Typical Details
----------	-----------------

initials:	ML
-----------	----

date:	03/07/2018
-------	------------

drg no:	ML/TYP/156
---------	------------