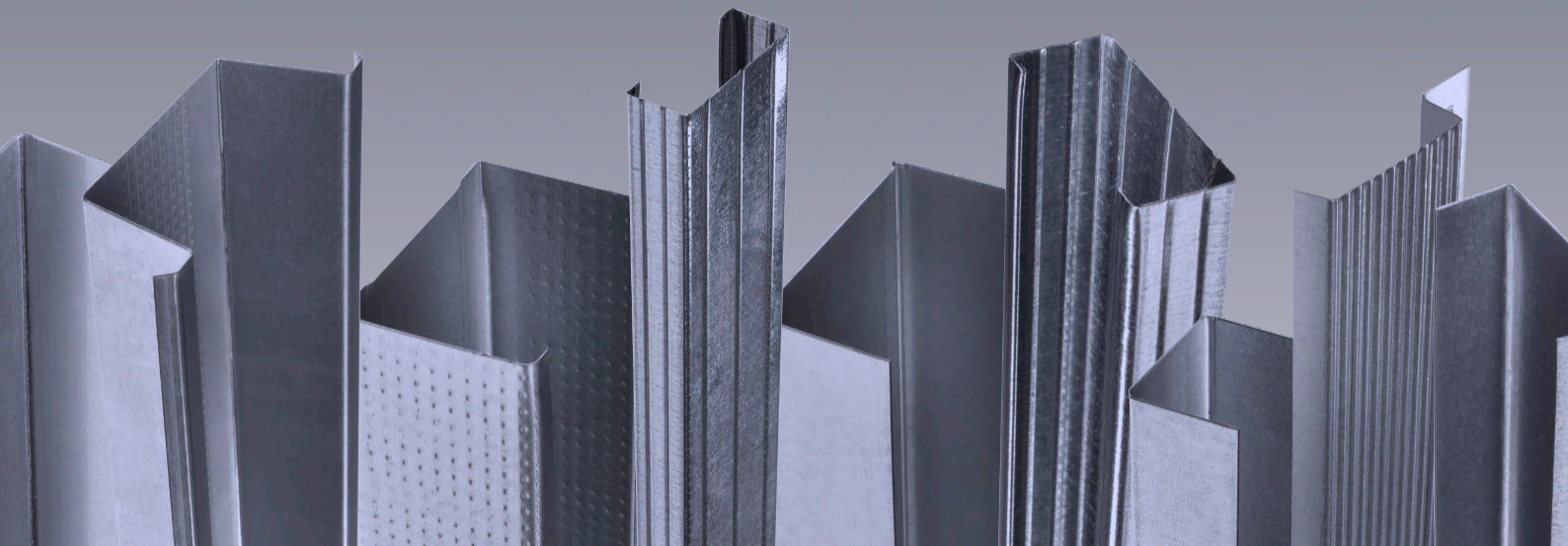




Internal Ceilings - Metal Furring Details



Contents

Metal Furring Ceiling System

ML/TYP/140

ML/TYP/141

ML/TYP/142

ML/TYP/143

soffit fixing

wall abutment - section A

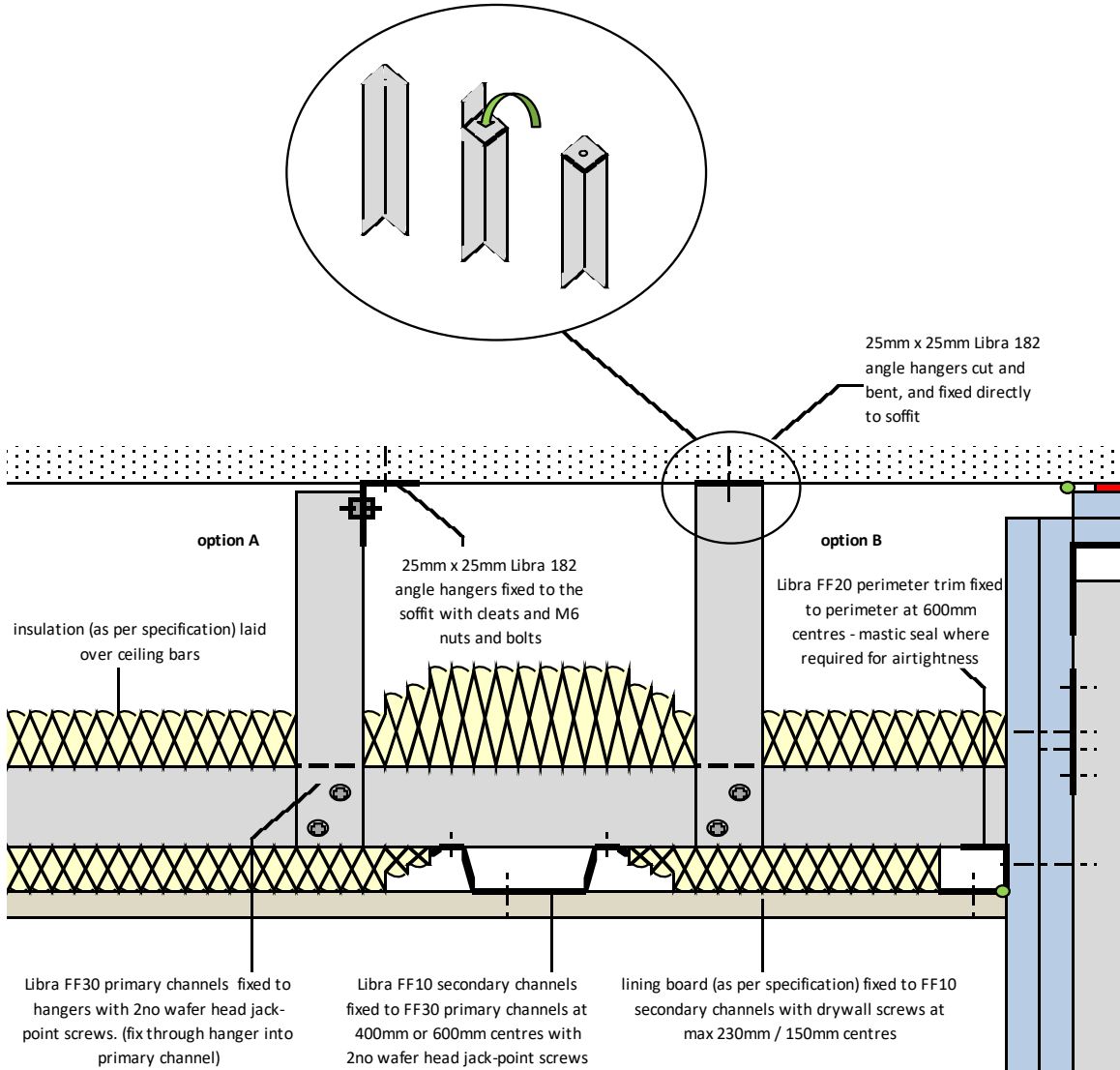
wall abutment - section B

board layout

**Libra MF Ceiling
Soffit Fixing**

MF ceiling fixed with cleats to soffit - SWL = 30kg/m²
including frame, insulation and board.

MF ceiling direct fixed as option B - SWL = 23kg/m²
including frame, insulation and board



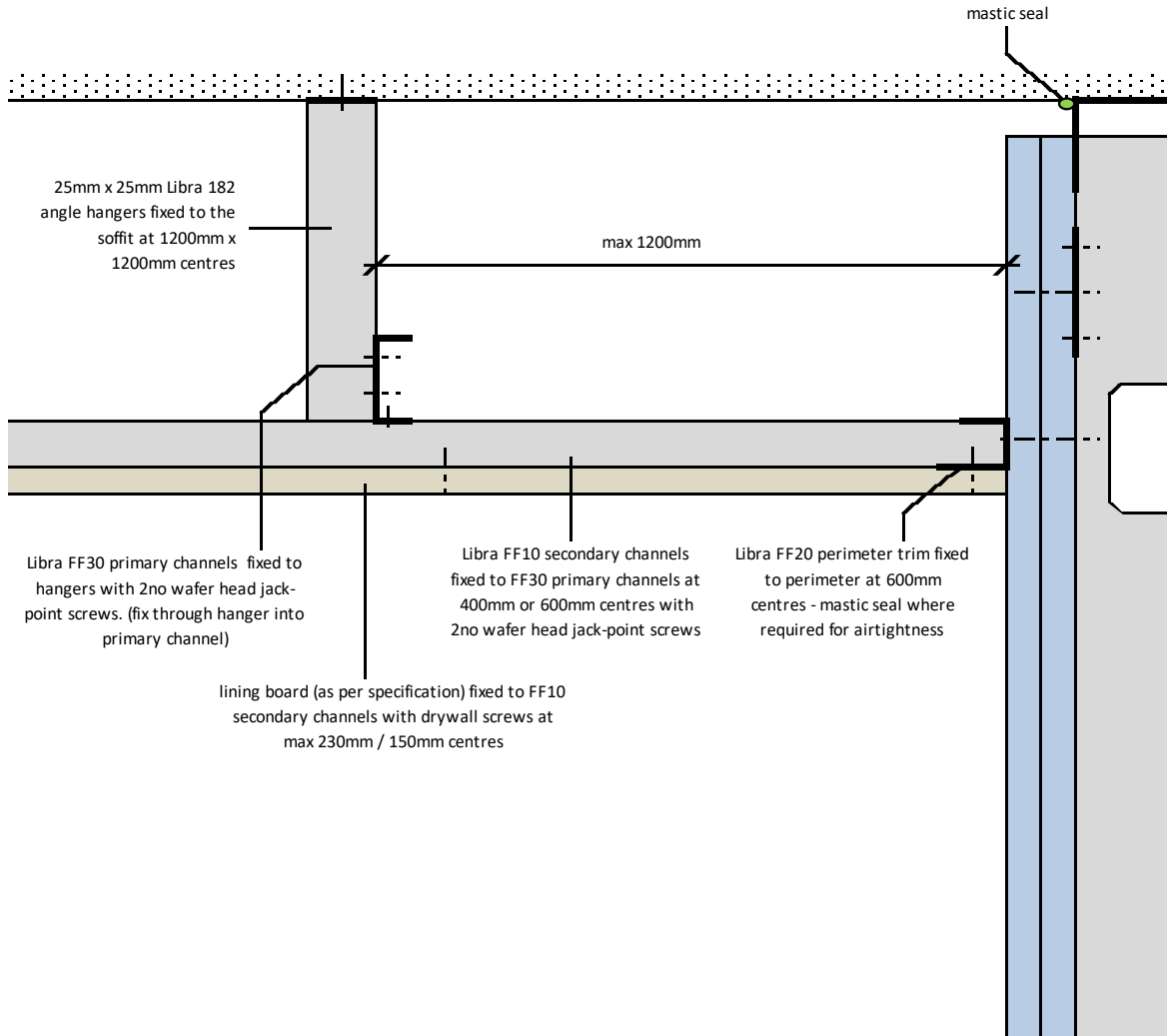
Notes: This drawing should be read in conjunction with the relevant sections of the manufacturer's current product literature we would draw your attention to the Construction (Design and Management) Regulations 1994 and the Approved Code of Practice which detail the legal duties of clients, client's agents designers and contractors involved in construction projects.

for discussion purposes only / do not scale



project: Typical Details		
initials: ML	date: 19/02/2019	drg no: ML/TYP/140

**Libra MF Ceiling
Section A - Wall Abutment**



Notes: This drawing should be read in conjunction with the relevant sections of the manufacturers current product literature we would draw your attention to the Construction (Design and Management) Regulations 1994 and the Approved Code of Practice which detail the legal duties of clients, client's agents designers and contractors involved in construction projects.

for discussion purposes only / do not scale



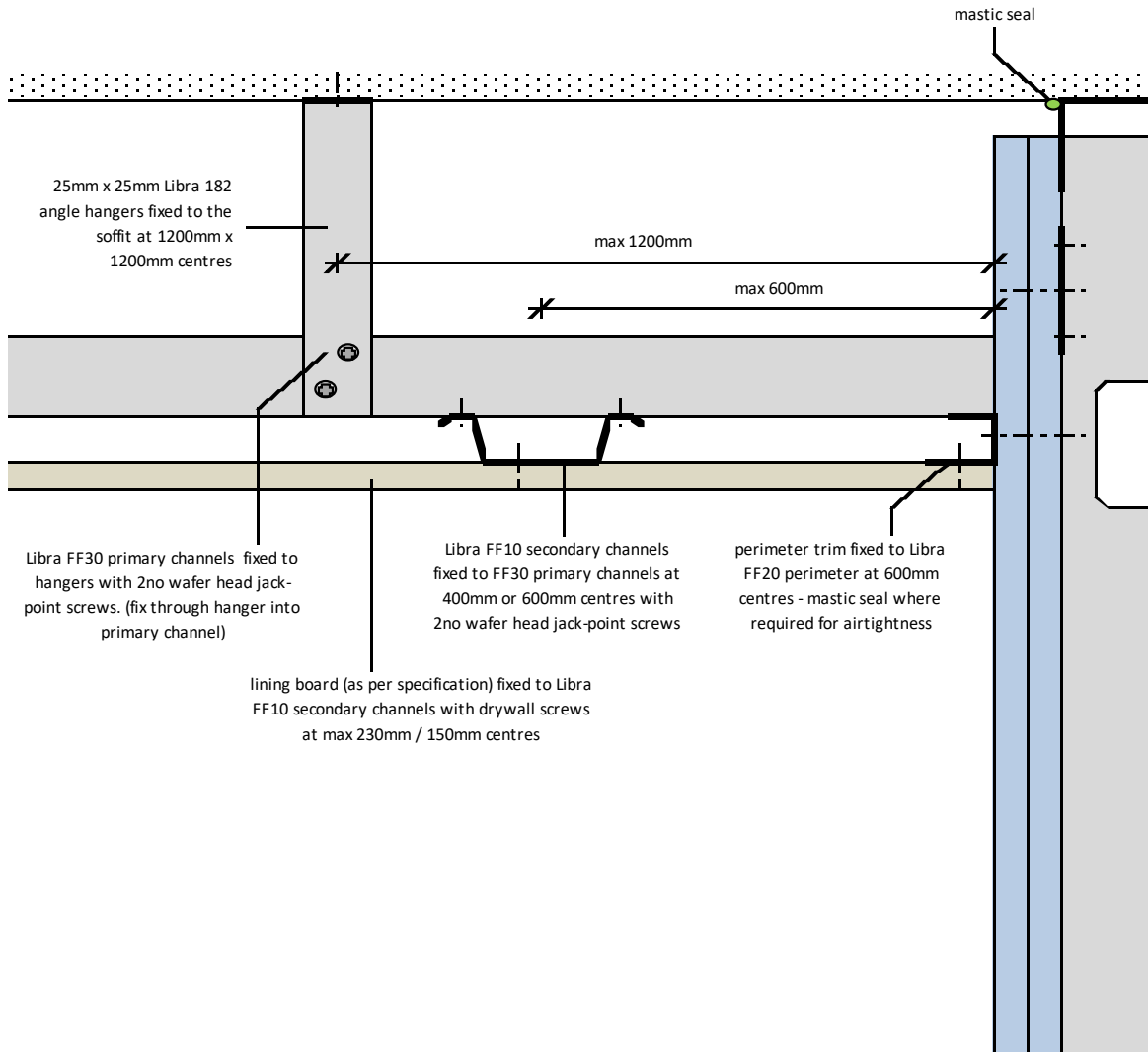
project:	Typical Details
----------	-----------------

initials: ML

date: 19/02/2019

drg no: ML/TYP/141

**Libra MF Ceiling
Section B - Wall Abutment**



Notes: This drawing should be read in conjunction with the relevant sections of the manufacturers current product literature we would draw your attention to the Construction (Design and Management) Regulations 1994 and the Approved Code of Practice which detail the legal duties of clients, client's agents designers and contractors involved in construction projects.

for discussion purposes only / do not scale



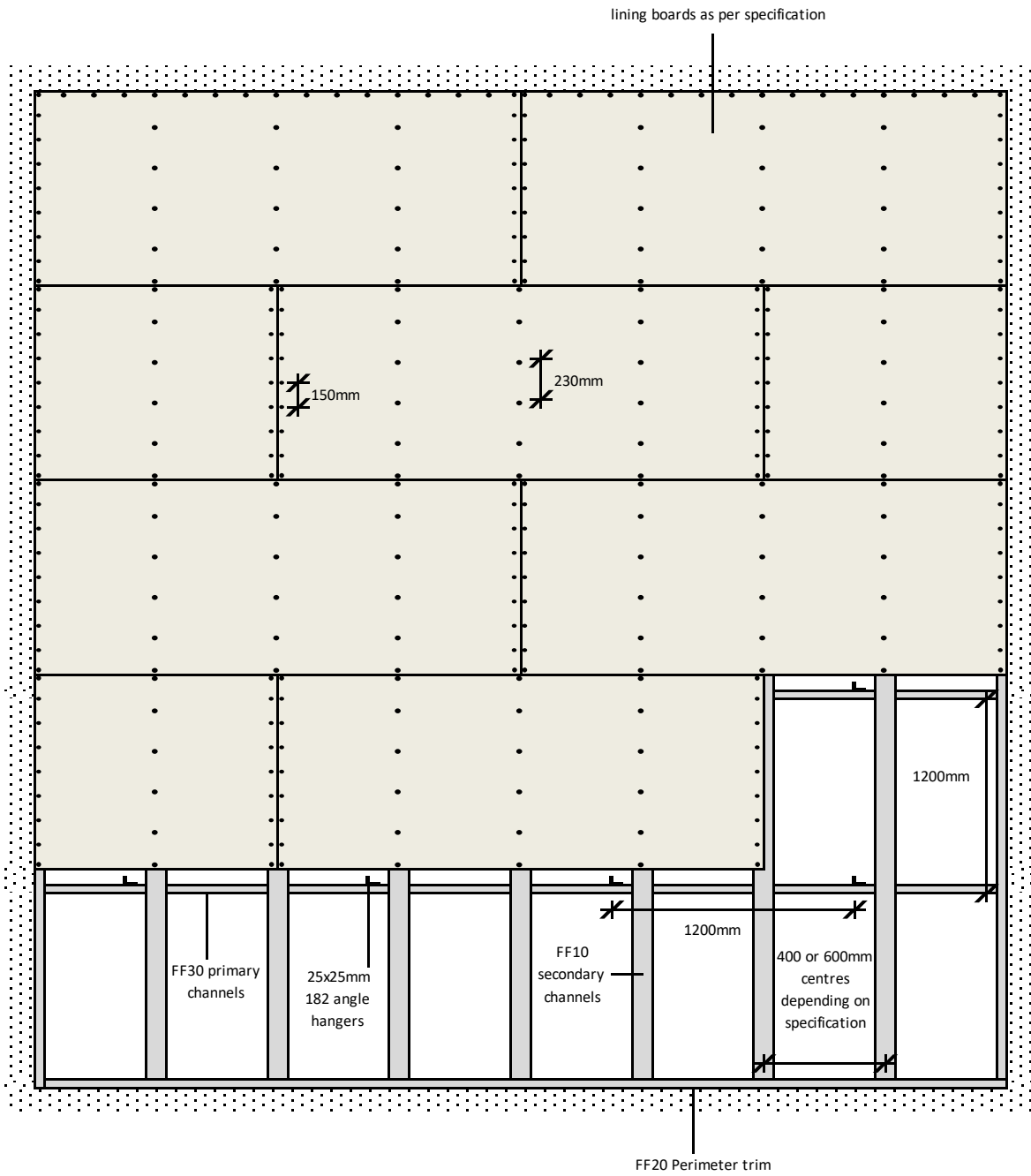
project: Typical Details

initials: ML

date: 19/02/2019

drg no: ML/TYP/142

**Libra MF Ceiling
Board Layout**



Notes: This drawing should be read in conjunction with the relevant sections of the manufacturer's current product literature we would draw your attention to the Construction (Design and Management) Regulations 1994 and the Approved Code of Practice which detail the legal duties of clients, client's agents designers and contractors involved in construction projects.

for discussion purposes only / do not scale



project:			Typical Details		
initials:	date:	drg no:	initials:	date:	drg no:
ML	19/02/2019	ML/TYP/143	ML	19/02/2019	ML/TYP/143