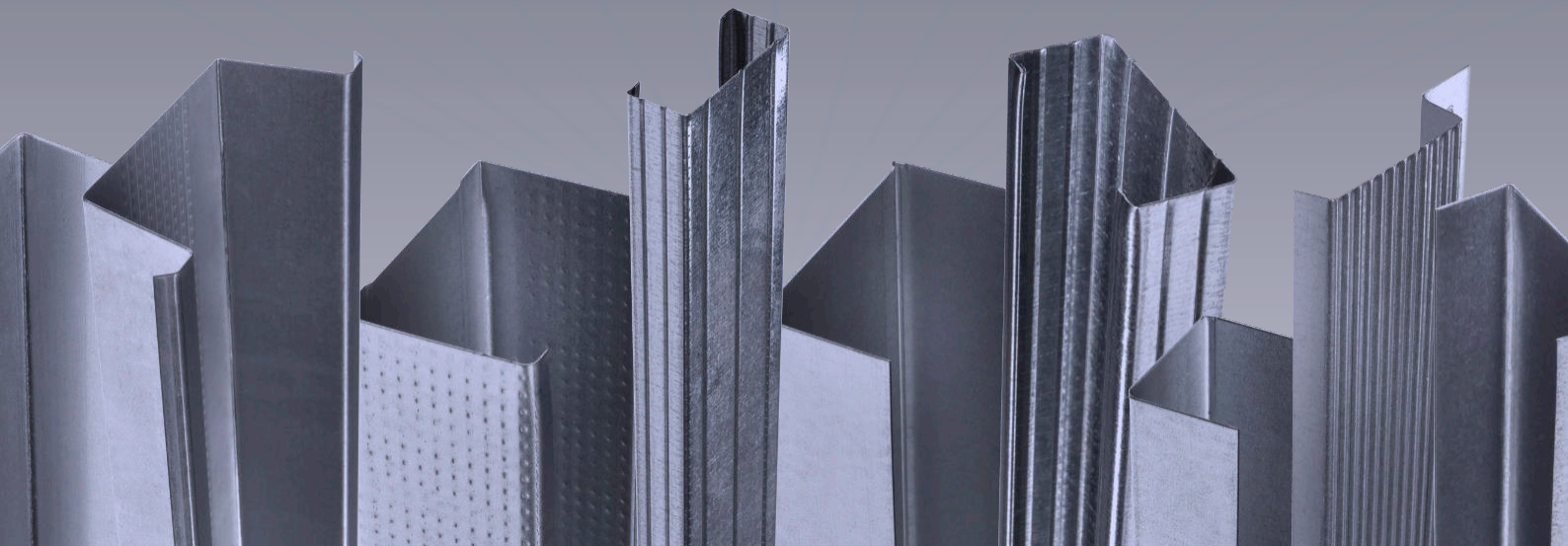




Internal Partitions - Double Skin Details

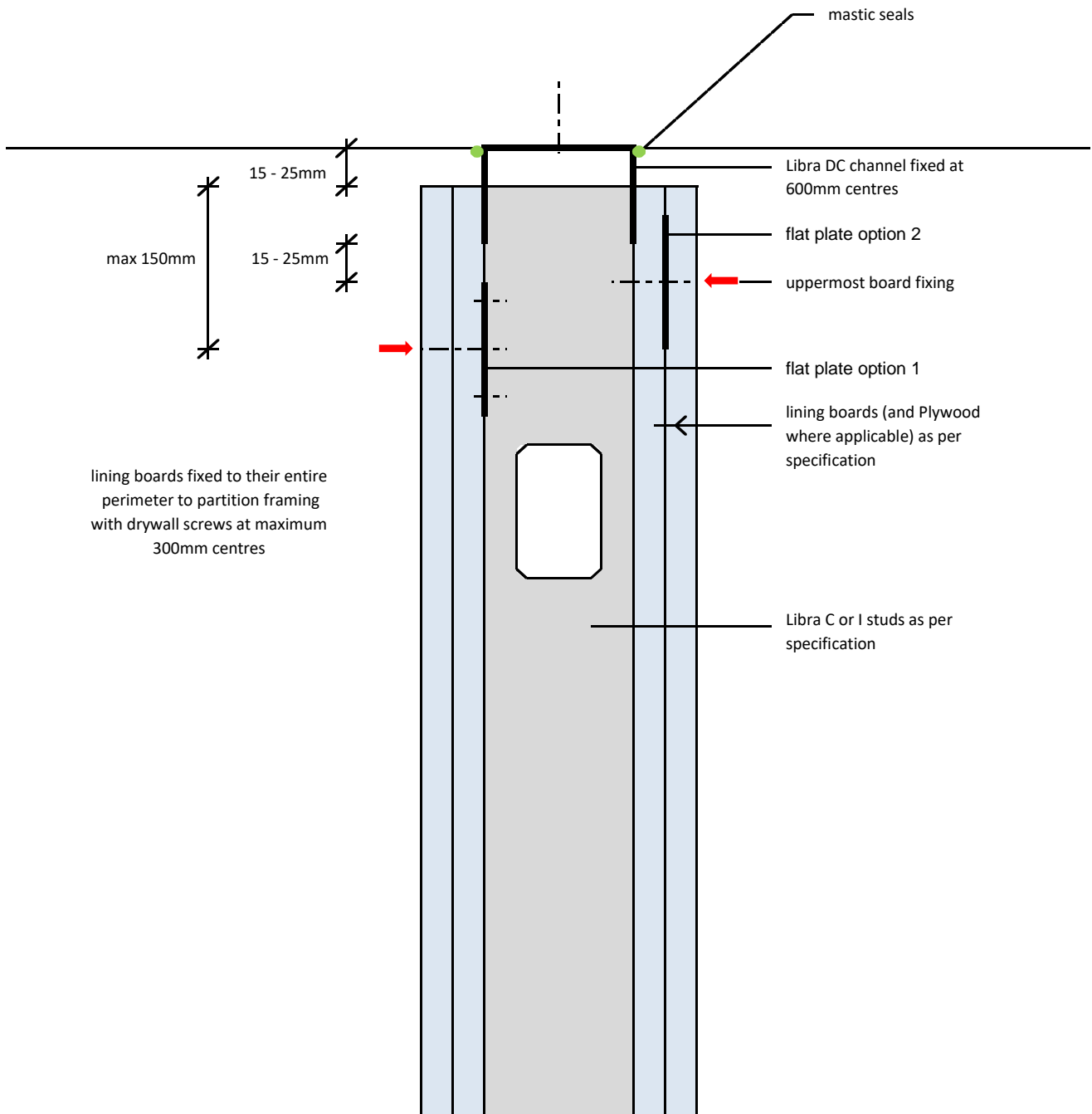


Contents

Metal Stud Partition System (Internal Partitions Double Skin)

ML/TYP/020	15 - 25mm / non fire rated deflection head
ML/TYP/021	15 - 25mm / 30 or 60 minute deflection Head
ML/TYP/023	base detail
ML/TYP/024	internal and external corner detail
ML/TYP/025	abutment detail
ML/TYP/026	T Junction
ML/TYP/027	horizontal joint
ML/TYP/028	light / medium door opening
ML/TYP/029	light / medium door opening - section AA
ML/TYP/030	30 or 60 minute deflection head with core board
ML/TYP/031	90 or 120 minute deflection head
ML/TYP/032	C & I stud splice
ML/TYP/033	patressing detail

standard internal partition
 15 - 25mm / non fire rated deflection head



Notes: This drawing should be read in conjunction with the relevant sections of the manufacturers current product literature we would draw your attention to the Construction (Design and Management) Regulations 1994 and the Approved Code of Practice which detail the legal duties of clients, client's agents designers and contractors involved in construction projects.

for discussion purposes only / do not scale



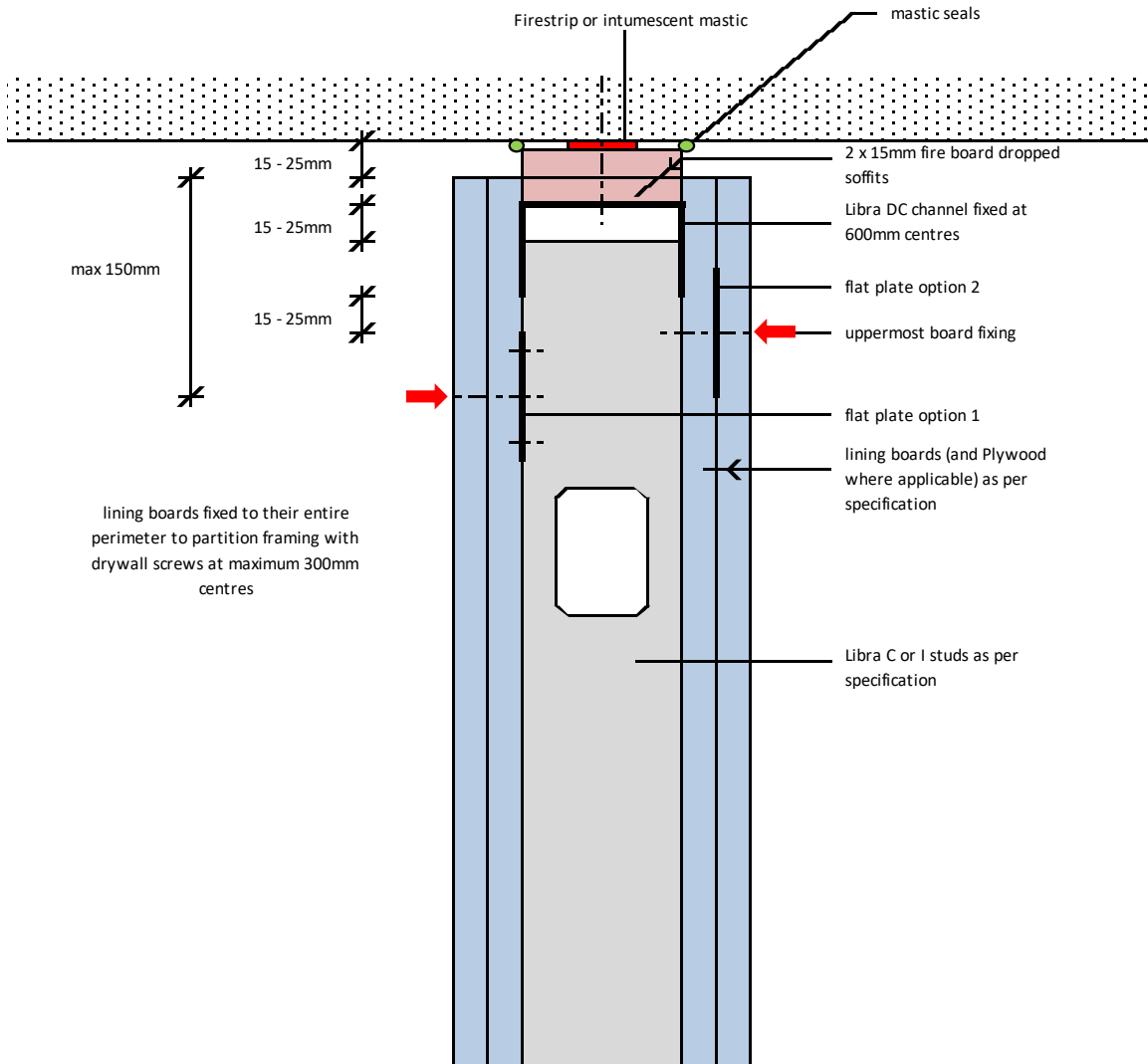
project:
 Typical Detail

initials:
 ML

date:
 21/5/2017

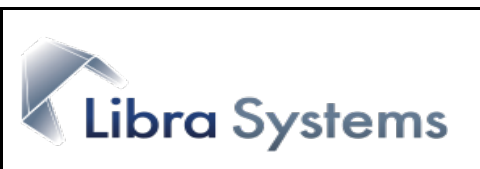
drg no:
 ML/TYP/020

standard internal partition
15 - 25mm / 30 or 60 minute deflection head



Notes: This drawing should be read in conjunction with the relevant sections of the manufacturers current product literature we would draw your attention to the Construction (Design and Management) Regulations 1994 and the Approved Code of Practice which detail the legal duties of clients, client's agents designers and contractors involved in construction projects.

for discussion purposes only / do not scale



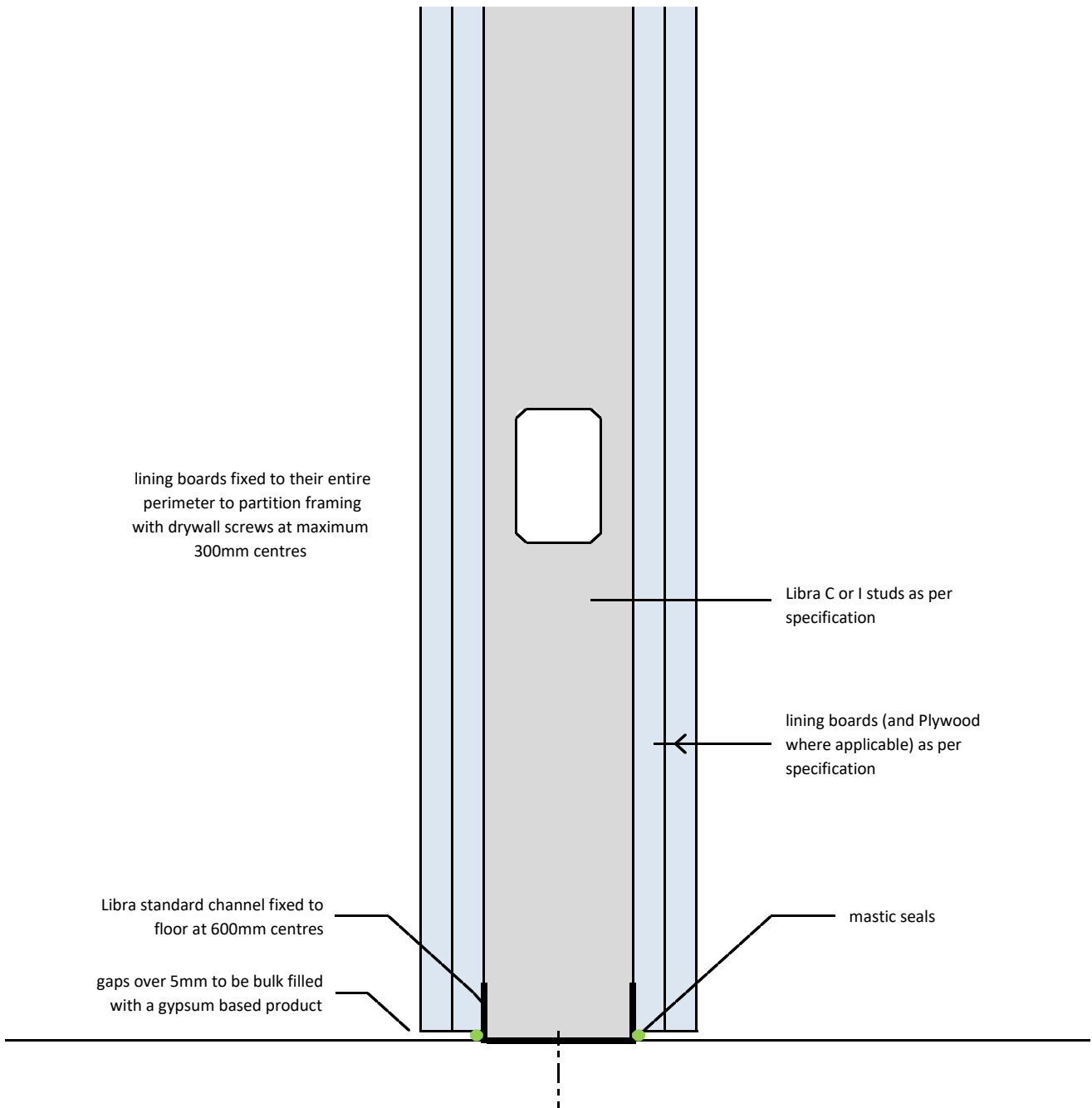
project:	Typical Detail	
----------	----------------	--

initials:	ML
-----------	----

date:	21/05/2017
-------	------------

drg no:	ML/TYP/021
---------	------------

standard internal partition
base detail



Notes: This drawing should be read in conjunction with the relevant sections of the manufacturers current product literature we would draw your attention to the Construction (Design and Management) Regulations 1994 and the Approved Code of Practice which detail the legal duties of clients, client's agents designers and contractors involved in construction projects.

for discussion purposes only / do not scale



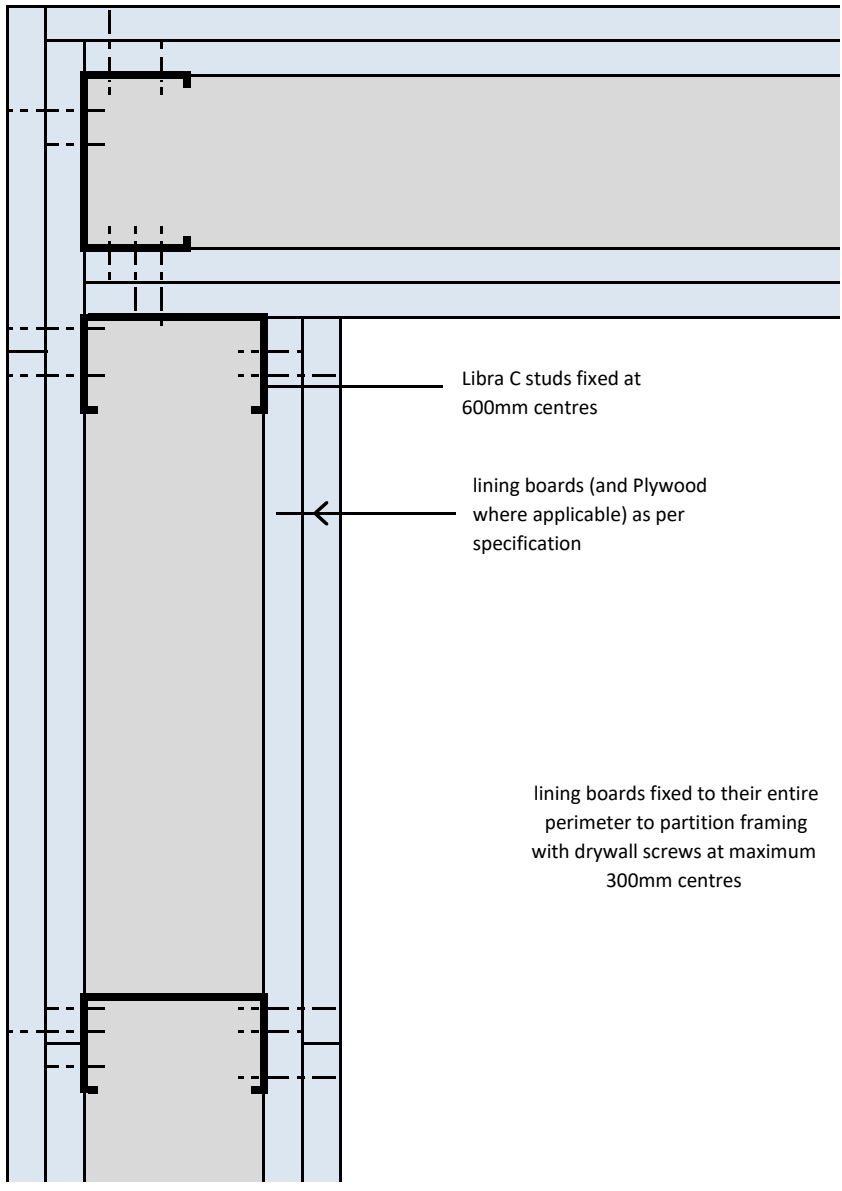
project:
Typical Detail

initials:
ML

date:
21/5/2107

drg no:
ML/TYP/023

standard internal partition
internal and external corner detail



Notes: This drawing should be read in conjunction with the relevant sections of the manufacturers current product literature we would draw your attention to the Construction (Design and Management) Regulations 1994 and the Approved Code of Practice which detail the legal duties of clients, client's agents designers and contractors involved in construction projects.

for discussion purposes only / do not scale



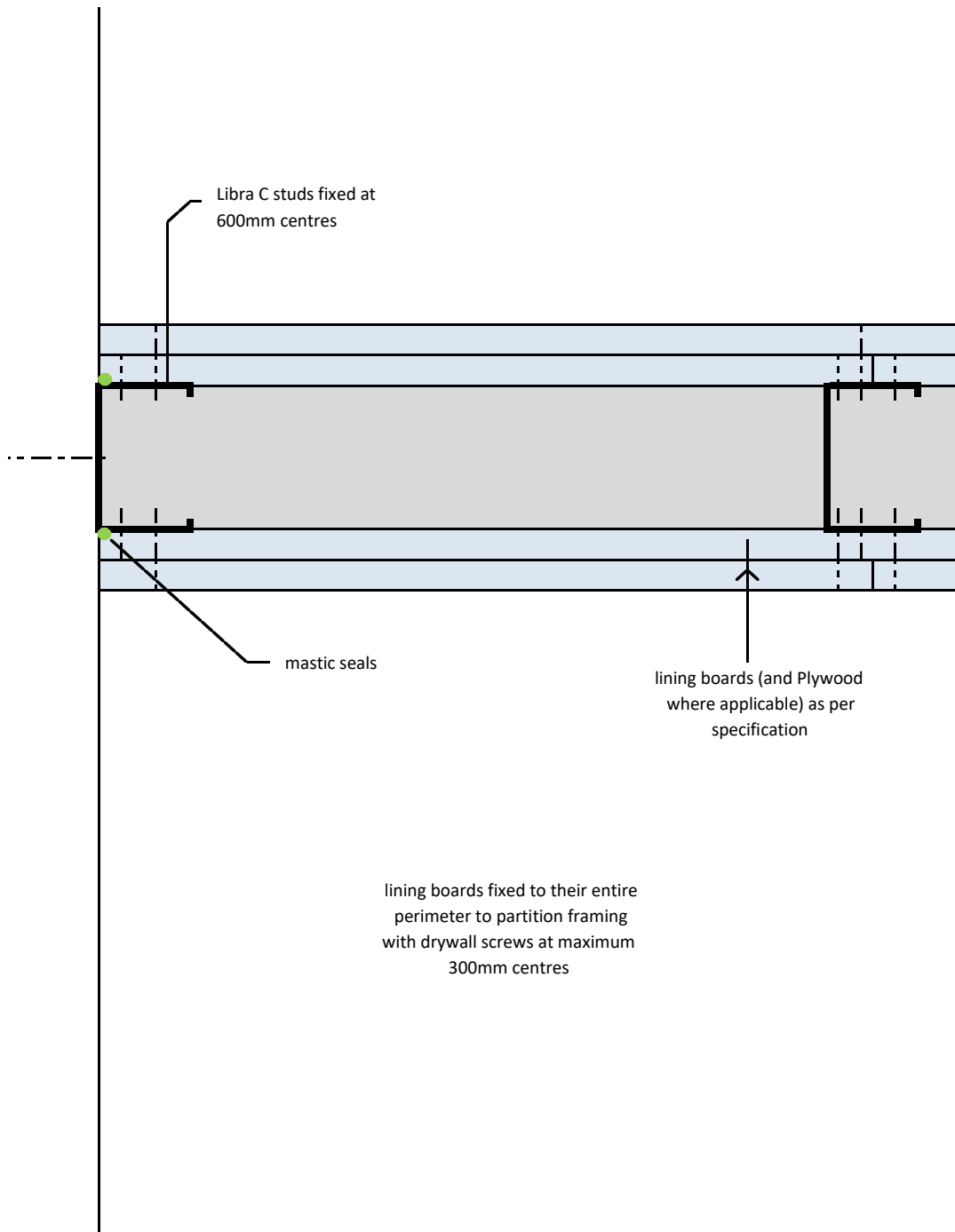
project:
Typical Detail

initials:
ML

date:
21/5/2017

drg no:
ML/TYP/024

standard internal partition
abutment detail



Notes: This drawing should be read in conjunction with the relevant sections of the manufacturers current product literature we would draw your attention to the Construction (Design and Management) Regulations 1994 and the Approved Code of Practice which detail the legal duties of clients, client's agents designers and contractors involved in construction projects.

for discussion purposes only / do not scale



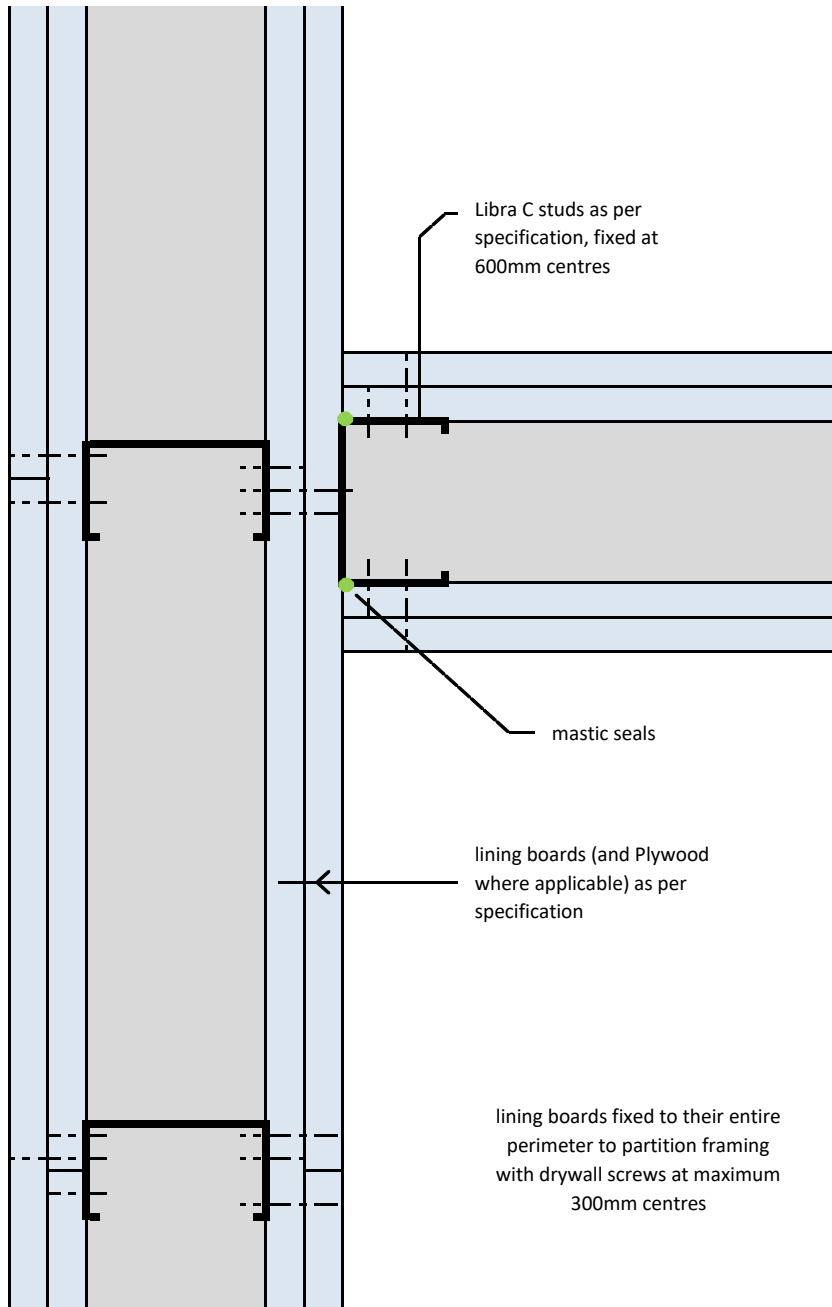
project:
Typical Detail

initials:
ML

date:
21/5/2017

drg no:
ML/TYP/025

standard internal partition
T Junction



Notes: This drawing should be read in conjunction with the relevant sections of the manufacturers current product literature we would draw your attention to the Construction (Design and Management) Regulations 1994 and the Approved Code of Practice which detail the legal duties of clients, client's agents designers and contractors involved in construction projects.

for discussion purposes only / do not scale



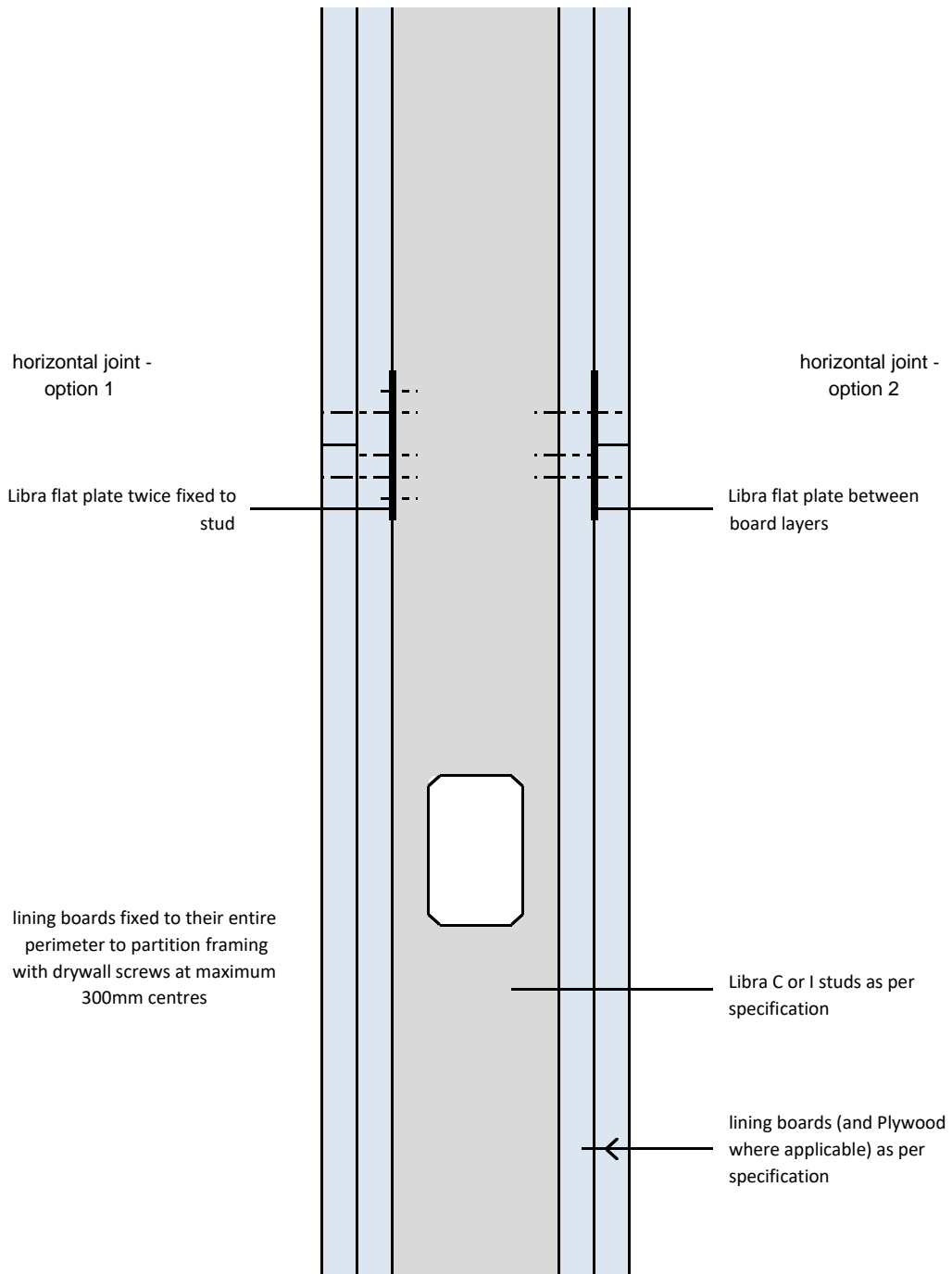
project:
Typical Detail

initials:
ML

date:
21/5/2107

drg no:
ML/TYP/026

standard internal partition
horizontal joint



Notes: This drawing should be read in conjunction with the relevant sections of the manufacturers current product literature we would draw your attention to the Construction (Design and Management) Regulations 1994 and the Approved Code of Practice which detail the legal duties of clients, client's agents designers and contractors involved in construction projects.

for discussion purposes only / do not scale



project:
Typical Detail

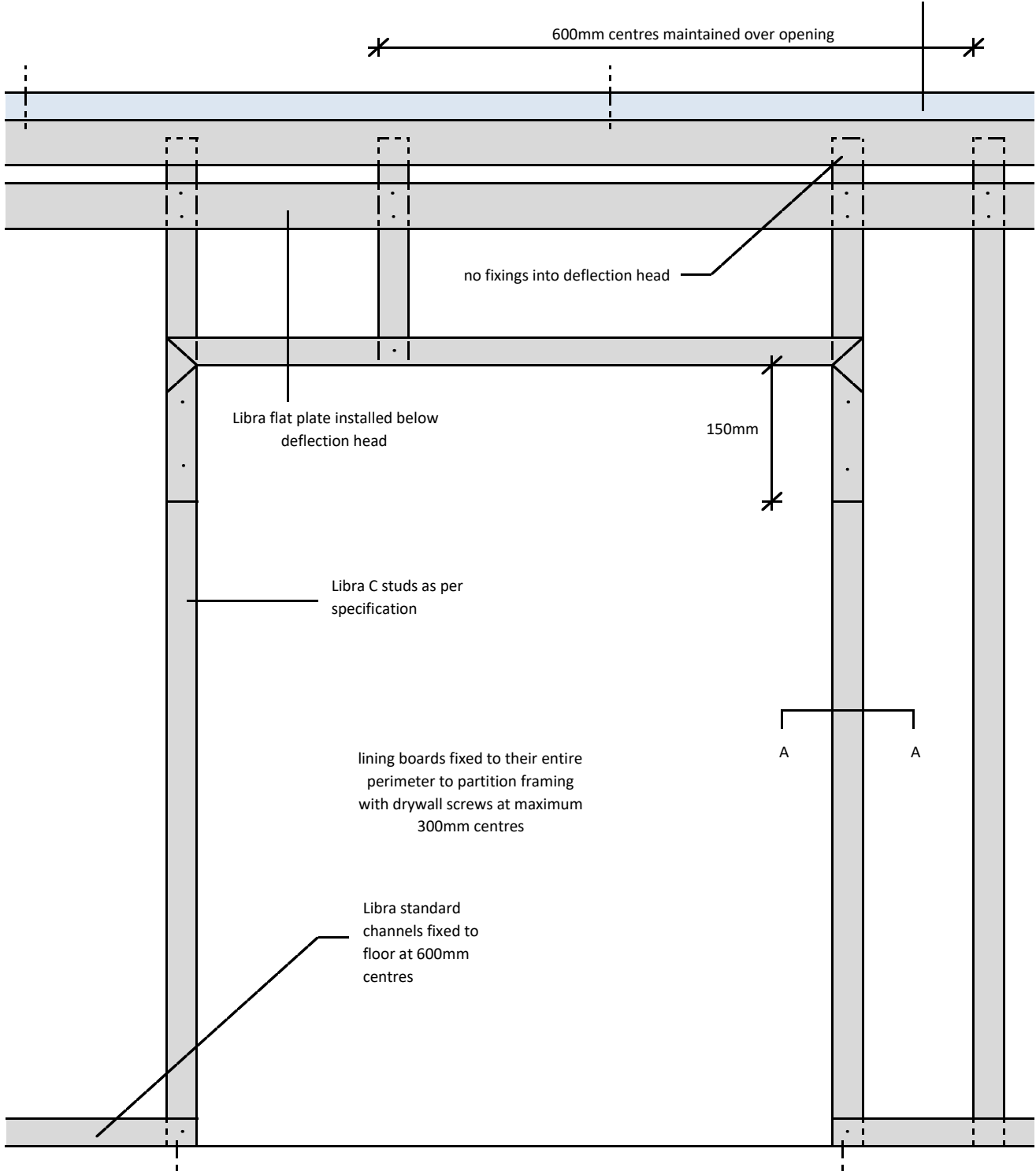
initials:
ML

date:
21/5/2017

drg no:
ML/TYP/027

standard internal partition
light / medium door opening

deflection head detail fixed to soffit at
600mm centres



Notes: This drawing should be read in conjunction with the relevant sections of the manufacturers current product literature we would draw your attention to the Construction (Design and Management) Regulations 1994 and the Approved Code of Practice which detail the legal duties of clients, client's agents designers and contractors involved in construction projects.

for discussion purposes only / do not scale



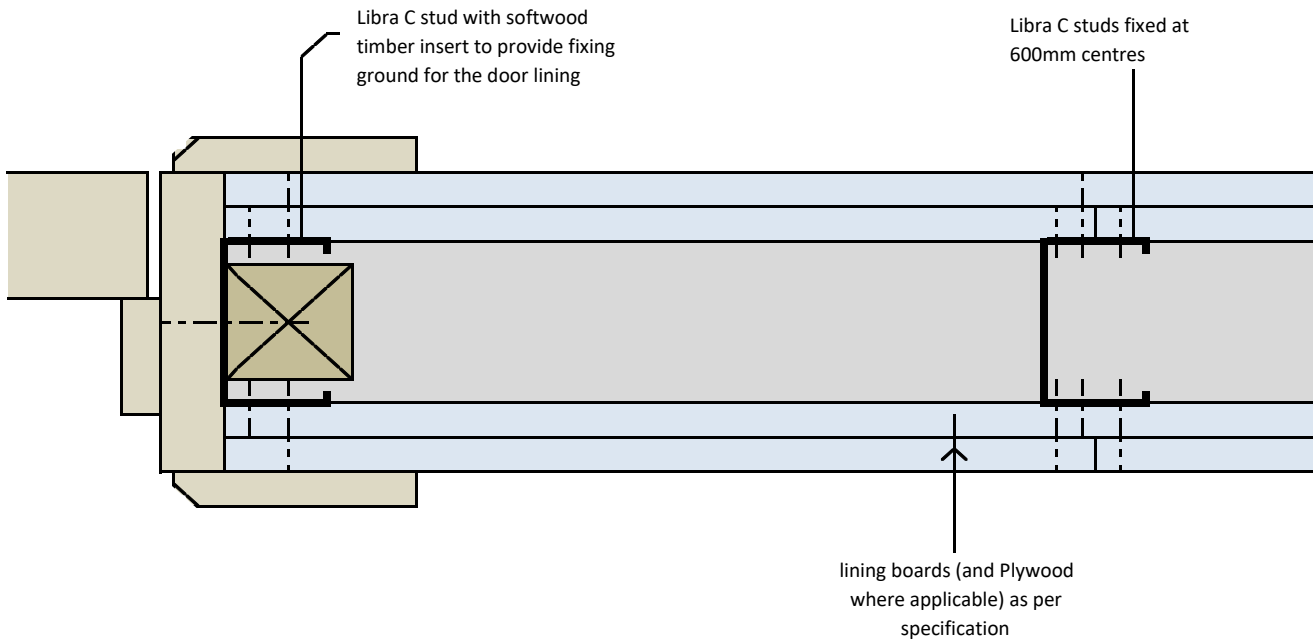
project:
Typical Detail

initials:
ML

date:
21/5/2107

drg no:
ML/TYP/028

standard internal partition
 light / medium door opening - section AA



lining boards fixed to their entire perimeter to partition framing with drywall screws at maximum 300mm centres

Notes: This drawing should be read in conjunction with the relevant sections of the manufacturers current product literature we would draw your attention to the Construction (Design and Management) Regulations 1994 and the Approved Code of Practice which detail the legal duties of clients, client's agents designers and contractors involved in construction projects.

for discussion purposes only / do not scale



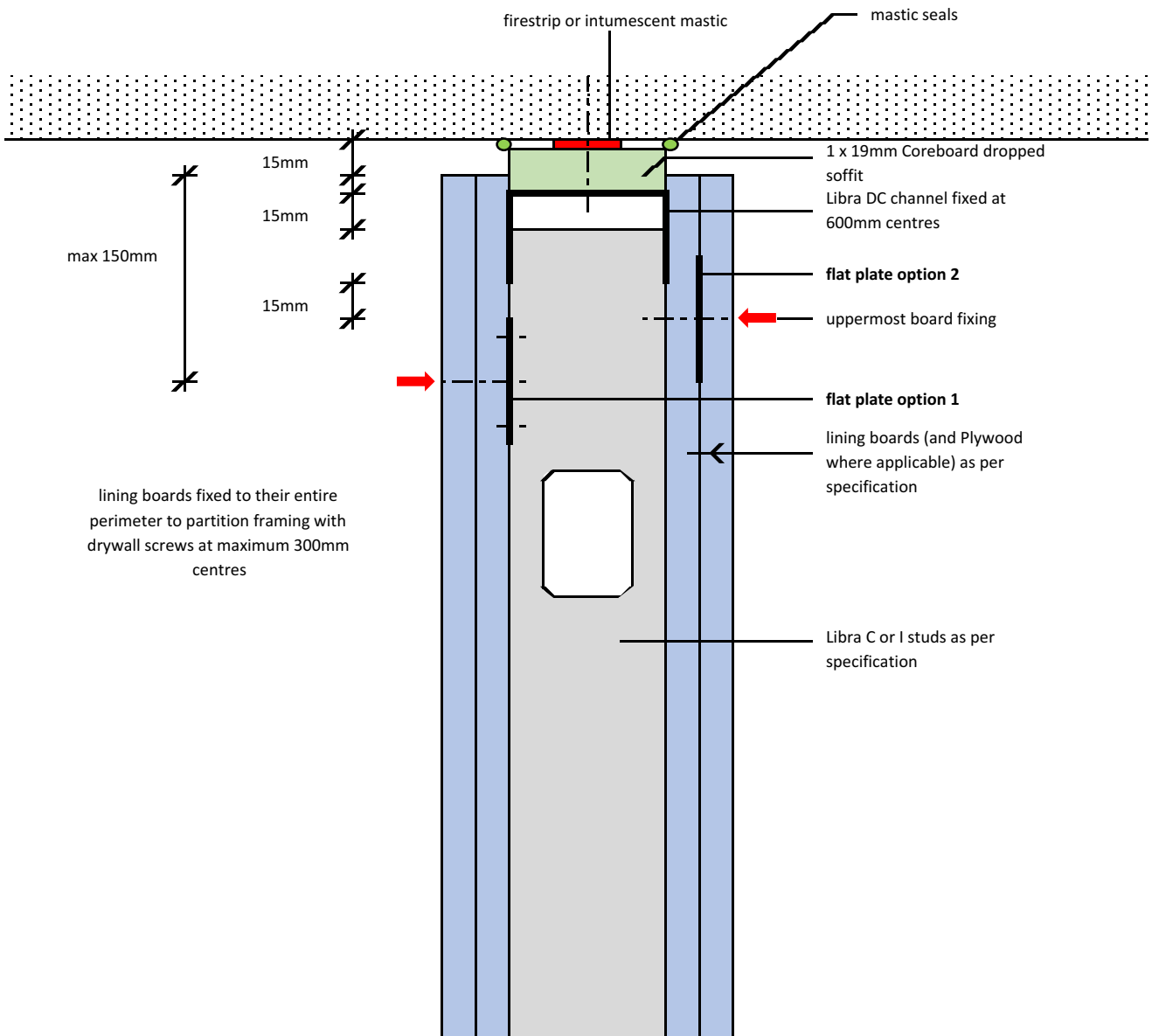
project:
 Typical Detail

initials:
 ML

date:
 21/5/2017

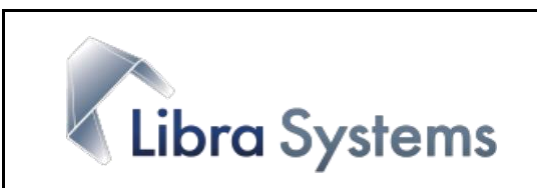
drg no:
 ML/TYP/029

standard internal partition
15mm / 30 or 60 minute deflection head



Notes: This drawing should be read in conjunction with the relevant sections of the manufacturers current product literature we would draw your attention to the Construction (Design and Management) Regulations 1994 and the Approved Code of Practice which detail the legal duties of clients, client's agents designers and contractors involved in construction projects.

for discussion purposes only / do not scale



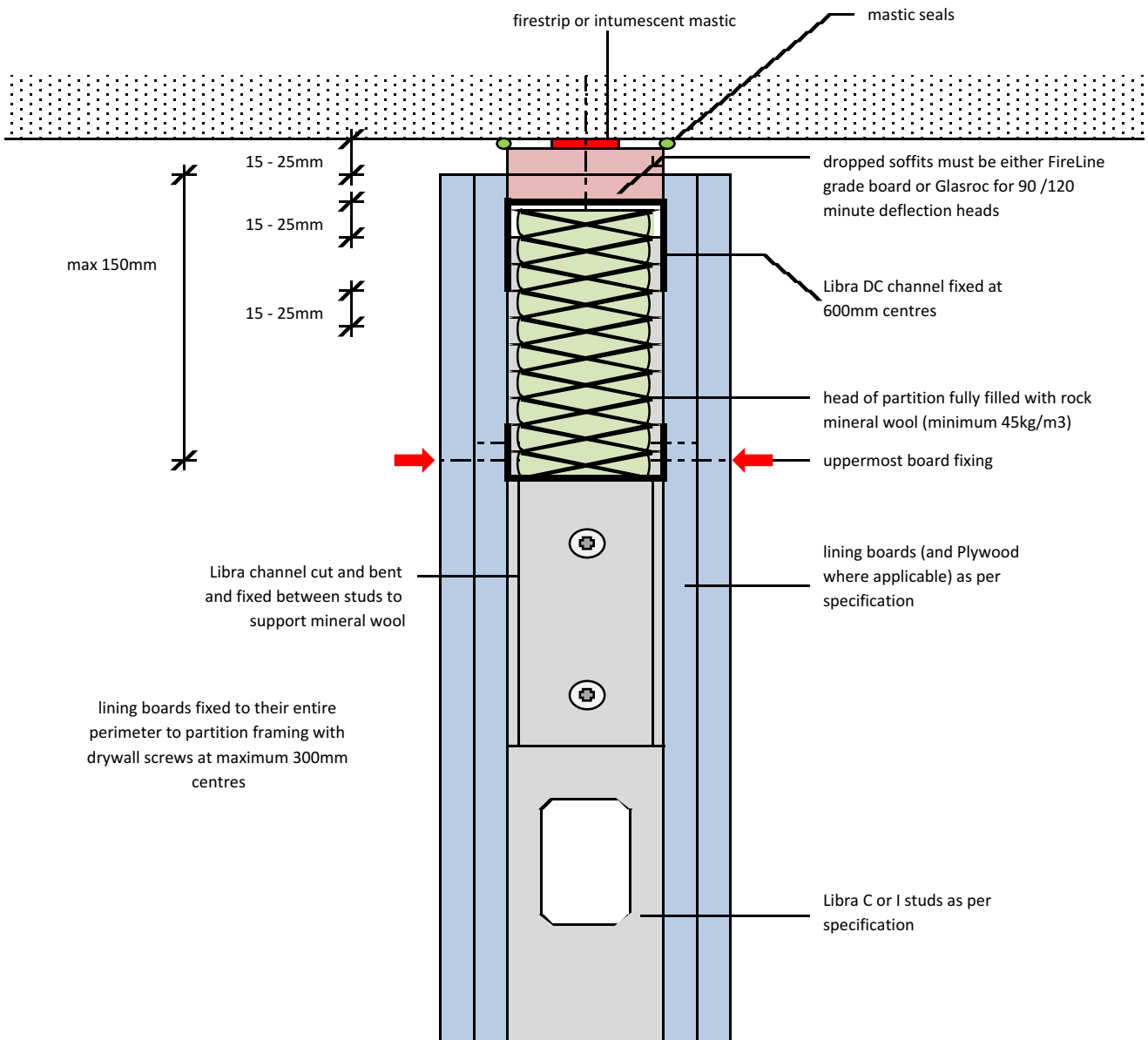
project: Typical Detail

initials: ML

date: 10/11/2017

drg no: ML/TYP/030

standard internal partition
15 - 25mm / 90 or 120 minute deflection head



Notes: This drawing should be read in conjunction with the relevant sections of the manufacturers current product literature we would draw your attention to the Construction (Design and Management) Regulations 1994 and the Approved Code of Practice which detail the legal duties of clients, client's agents designers and contractors involved in construction projects.

for discussion purposes only / do not scale

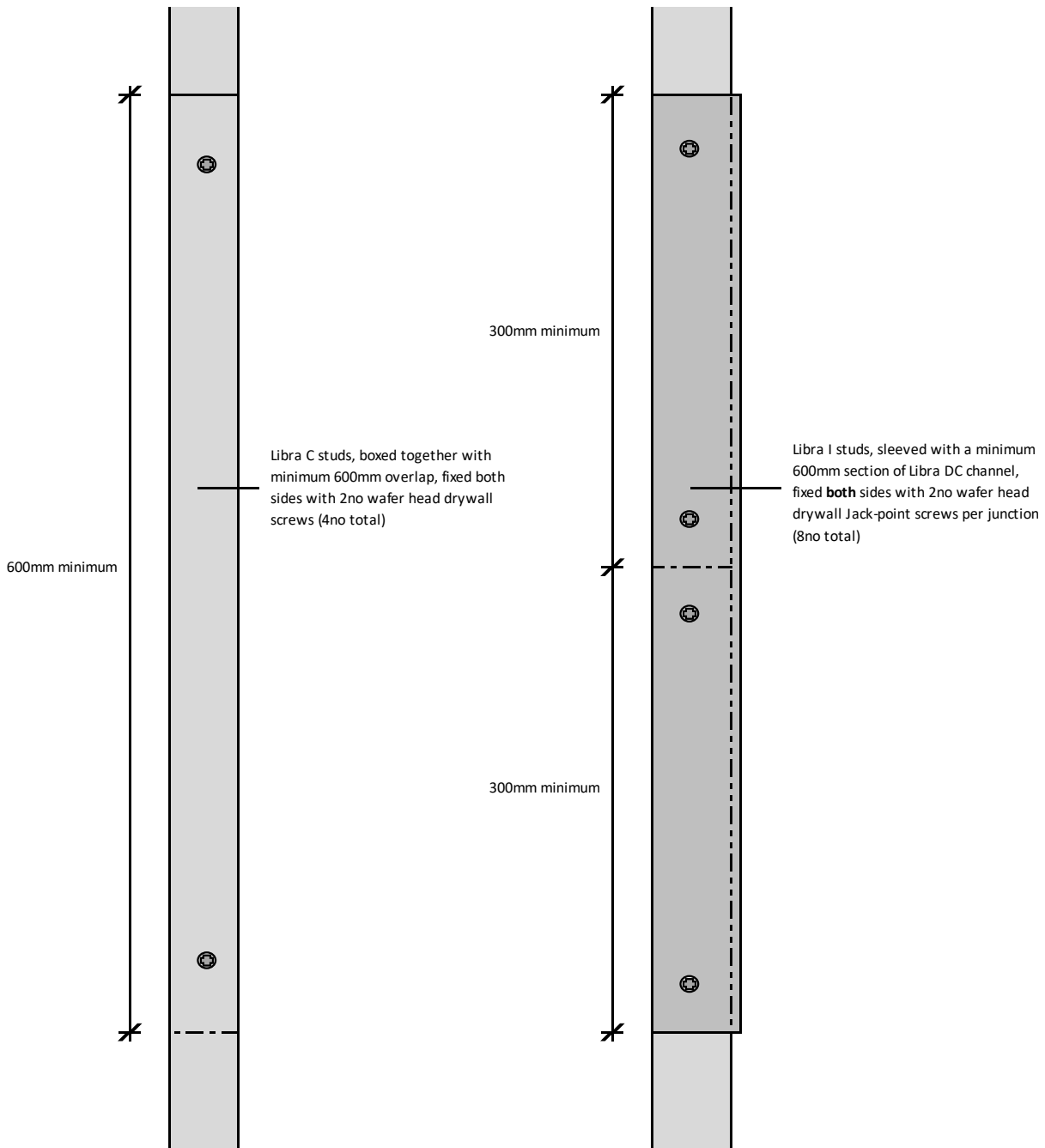


project:		
Typical Detail		
initials:	date:	drg no:
ML	21/09/2017	ML/TYP/031

Libra C & I Stud Splicing Details

Libra C Studs

Libra I Studs



Notes: This drawing should be read in conjunction with the relevant sections of the manufacturer's current product literature. We would draw your attention to the Construction (Design and Management) Regulations 1994 and the Approved Code of Practice which detail the legal duties of clients, client's agents, designers and contractors involved in construction projects.

for discussion purposes only / do not scale



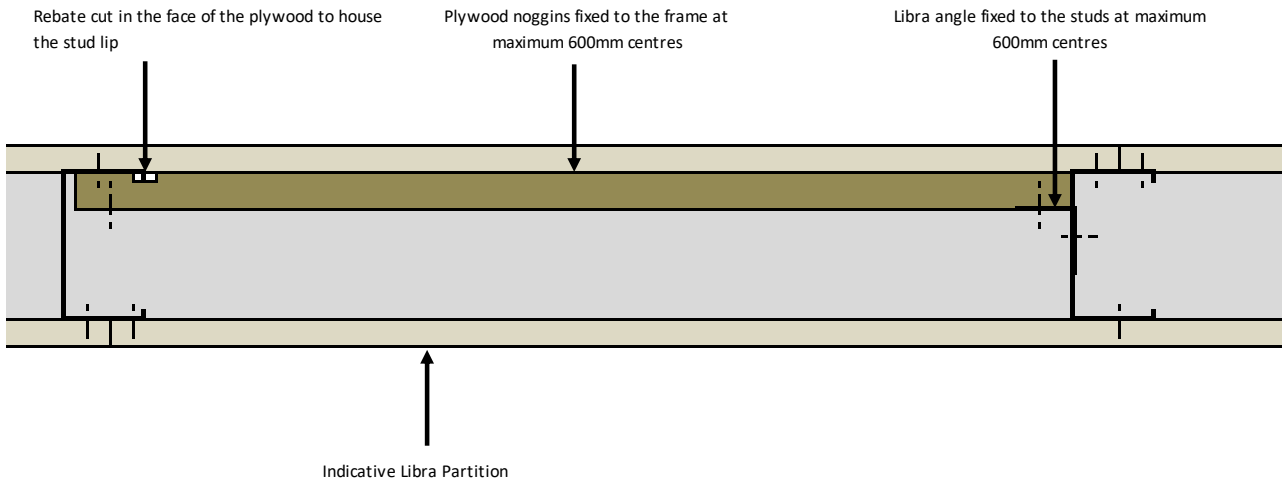
project: Typical Detail

initials: ML

date: 08/01/2020

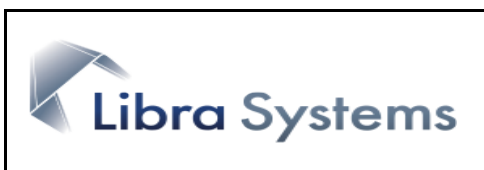
drg no: ML/TYP/032

Plywood Patresses / Noggins



Notes: This drawing should be read in conjunction with the relevant sections of the manufacturer's current product literature. We would draw your attention to the Construction (Design and Management) Regulations 1994 and the Approved Code of Practice which detail the legal duties of clients, client's agents, designers and contractors involved in construction projects.

for discussion purposes only / do not scale



project: Typical Detail			
initials: ML	date: 07/07/2023	drg no: ML/TYP/033	Rev: -