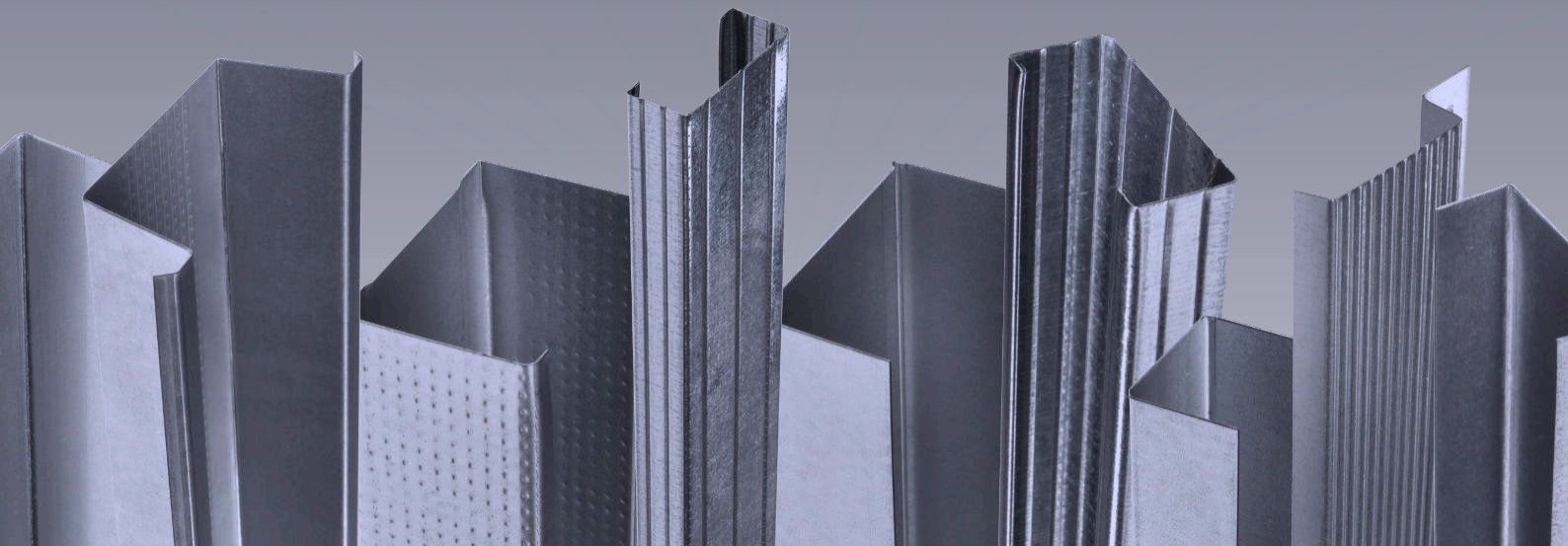




## Internal Partitions - Braced Twin Wall Details

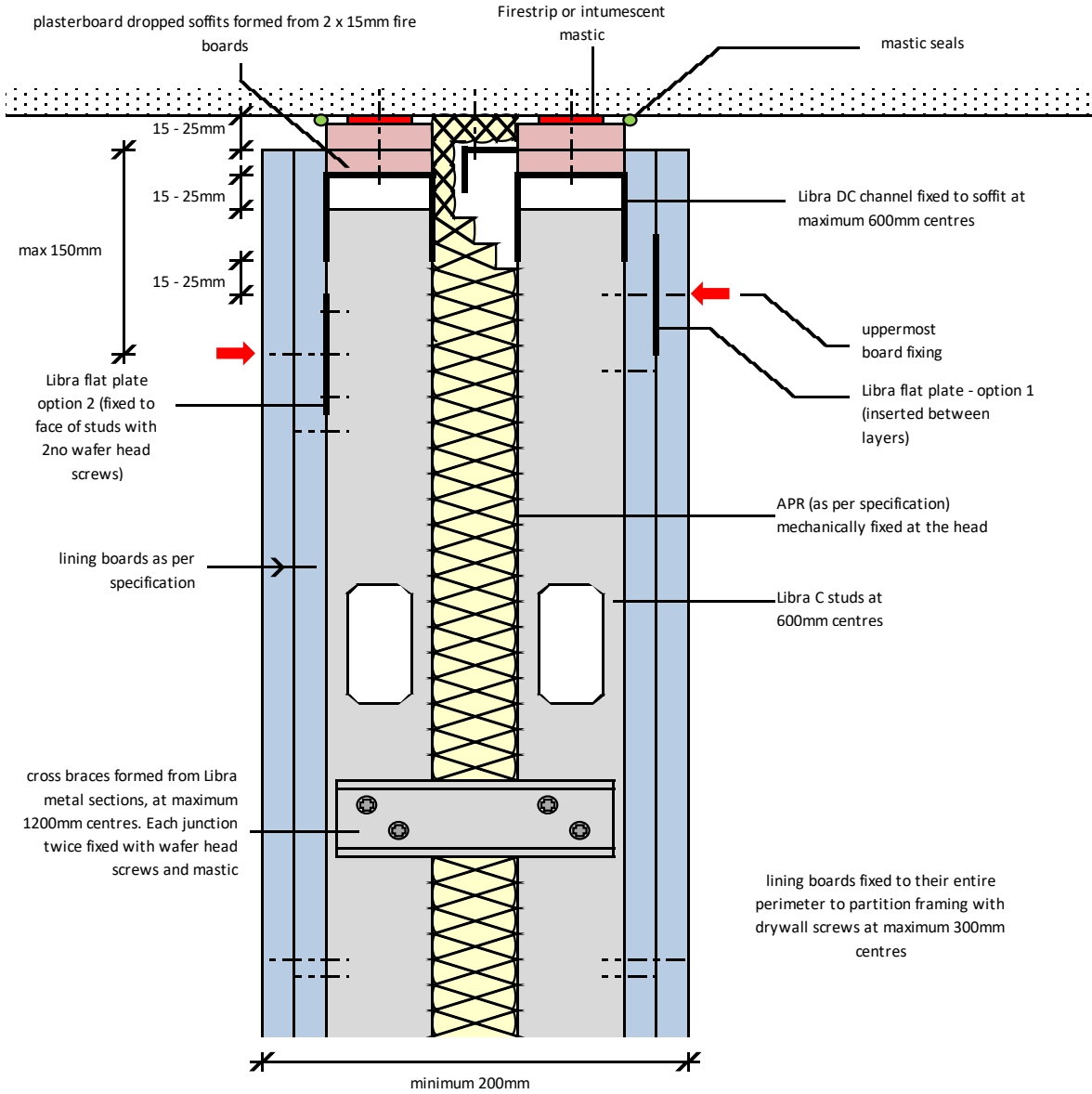


# Contents

## Metal Stud Partition System (Twin Walls)

ML/TYP/060	30 / 60 minute 15 - 25mm deflection head
ML/TYP/061	90 / 120 minute 15 - 25mm deflection head
ML/TYP/062	base detail
ML/TYP/063	internal and external corner
ML/TYP/064	abutment detail
ML/TYP/065	T junction
ML/TYP/066	horizontal joint - options 1 & 2
ML/TYP/067	heavy / severe door opening - elevation
ML/TYP/068	heavy / severe door opening - section AA
ML/TYP/069	letterbox opening over door head

**twinwall partition**  
**30 / 60 minute 15 - 25mm deflection head**



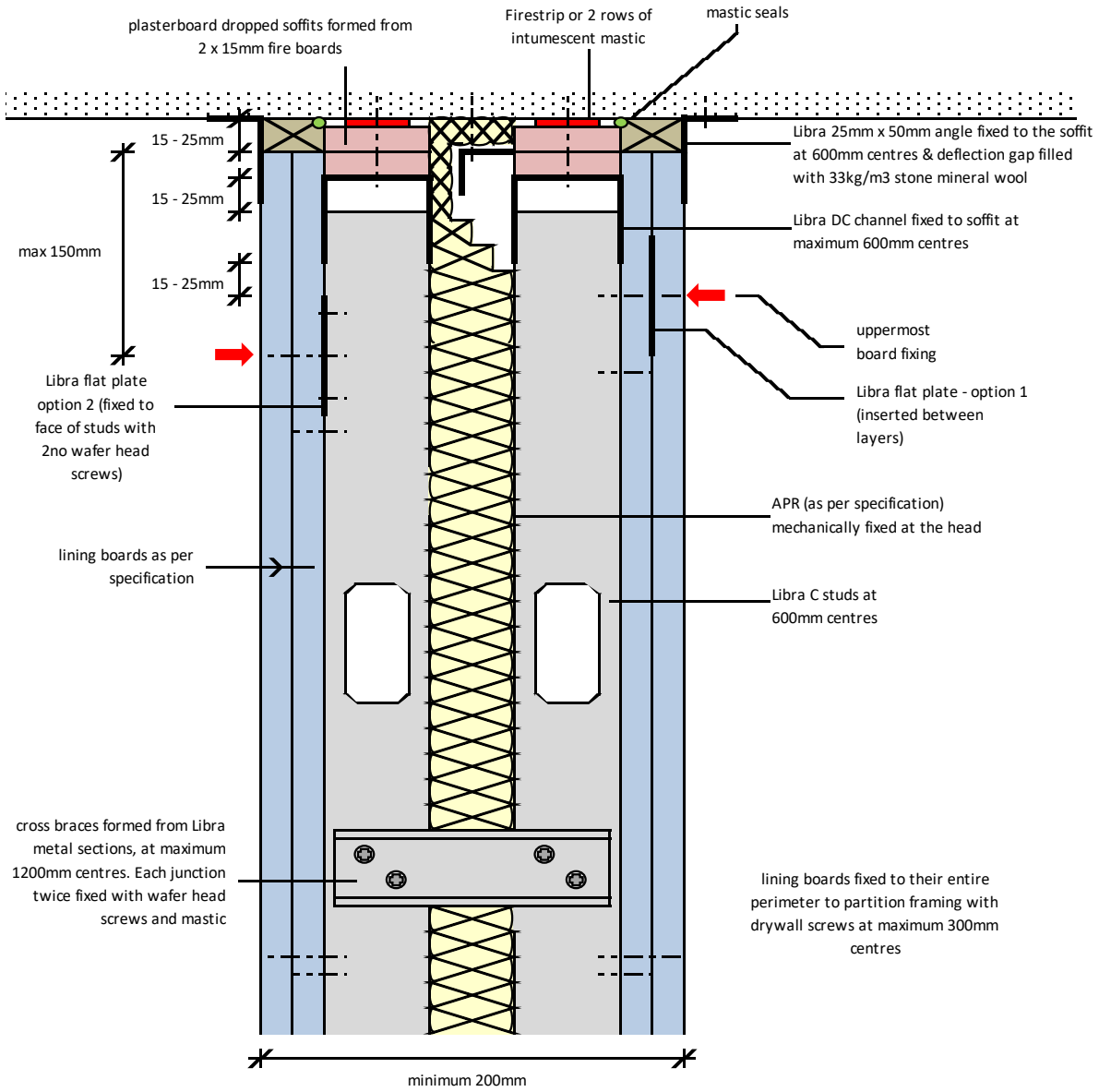
Notes: This drawing should be read in conjunction with the relevant sections of the manufacturers current product literature we would draw your attention to the Construction (Design and Management) Regulations 1994 and the Approved Code of Practice which detail the legal duties of clients, client's agents designers and contractors involved in construction projects.

for discussion purposes only / do not scale



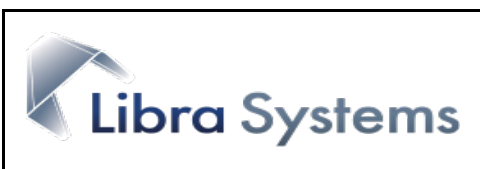
project:			Typical Detail		
initials:	date:	drg no:			
ML	21/05/2017	ML/TYP/060			

**braced twinwall partition**  
**90 / 120 minute 15 - 25mm deflection head**



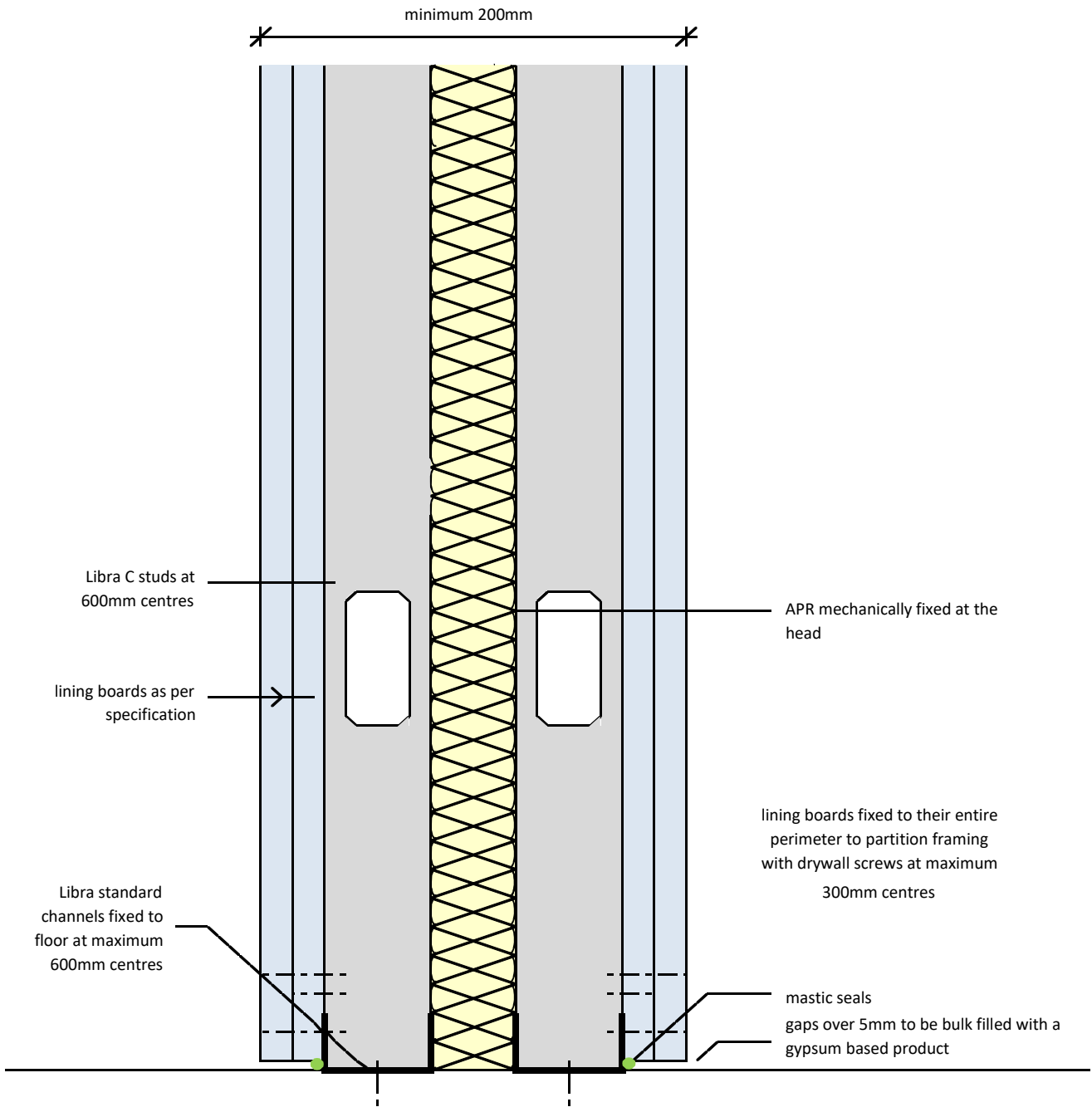
Notes: This drawing should be read in conjunction with the relevant sections of the manufacturers current product literature we would draw your attention to the Construction (Design and Management) Regulations 1994 and the Approved Code of Practice which detail the legal duties of clients, client's agents designers and contractors involved in construction projects.

for discussion purposes only / do not scale



project:			Typical Detail		
initials:	date:	drg no:			
ML	26/05/2017	ML/TYP/061			

twinwall partition  
party wall base detail



Notes: This drawing should be read in conjunction with the relevant sections of the manufacturers current product literature we would draw your attention to the Construction (Design and Management) Regulations 1994 and the Approved Code of Practice which detail the legal duties of clients, client's agents designers and contractors involved in construction projects.

for discussion purposes only / do not scale



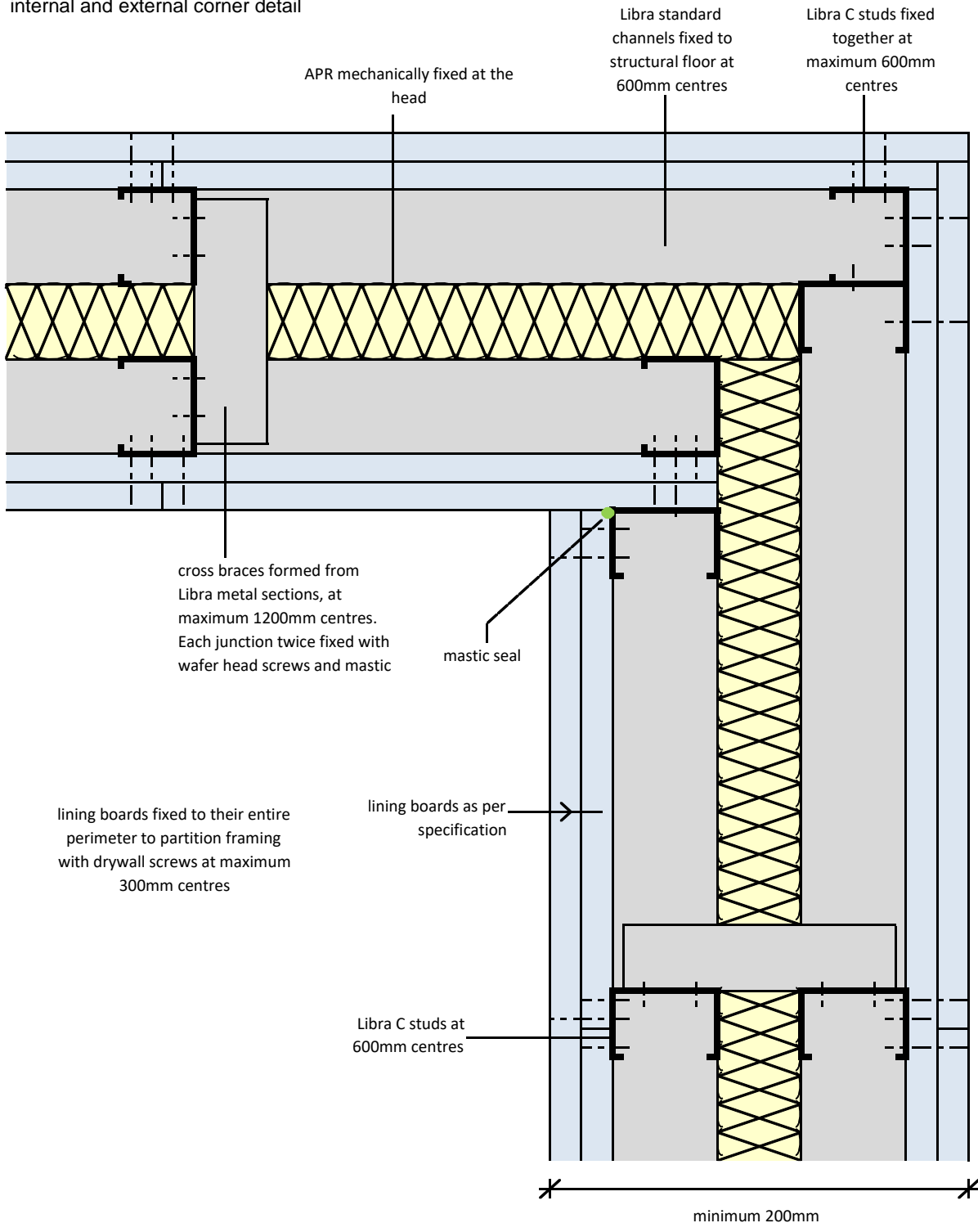
project:  
Typical Detail

initials:  
ML

date:  
21/5/2017

drg no:  
ML/TYP/062

twinwall partition  
internal and external corner detail



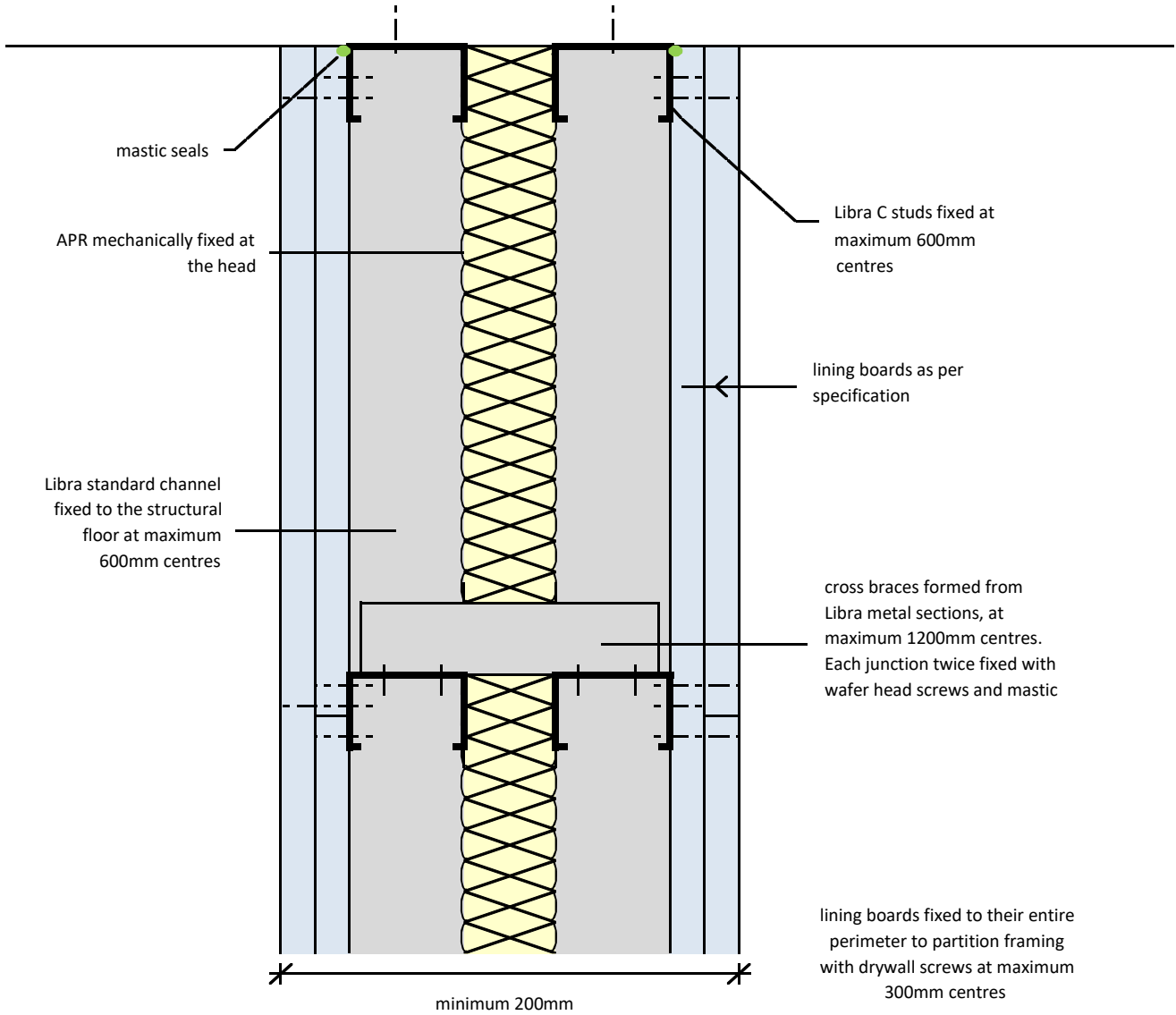
Notes: This drawing should be read in conjunction with the relevant sections of the manufacturers current product literature we would draw your attention to the Construction (Design and Management) Regulations 1994 and the Approved Code of Practice which detail the legal duties of clients, client's agents designers and contractors involved in construction projects.

for discussion purposes only / do not scale



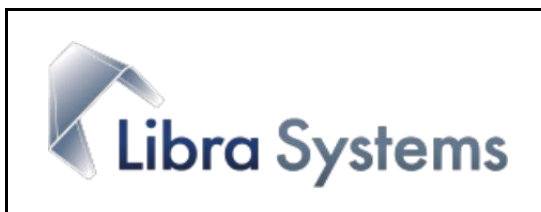
project: Typical Detail		
initials: ML	date: 21/5/2017	drg no: ML/TYP/063

twinwall partition  
Party wall abutment



Notes: This drawing should be read in conjunction with the relevant sections of the manufacturers current product literature we would draw your attention to the Construction (Design and Management) Regulations 1994 and the Approved Code of Practice which detail the legal duties of clients, client's agents designers and contractors involved in construction projects.

for discussion purposes only / do not scale



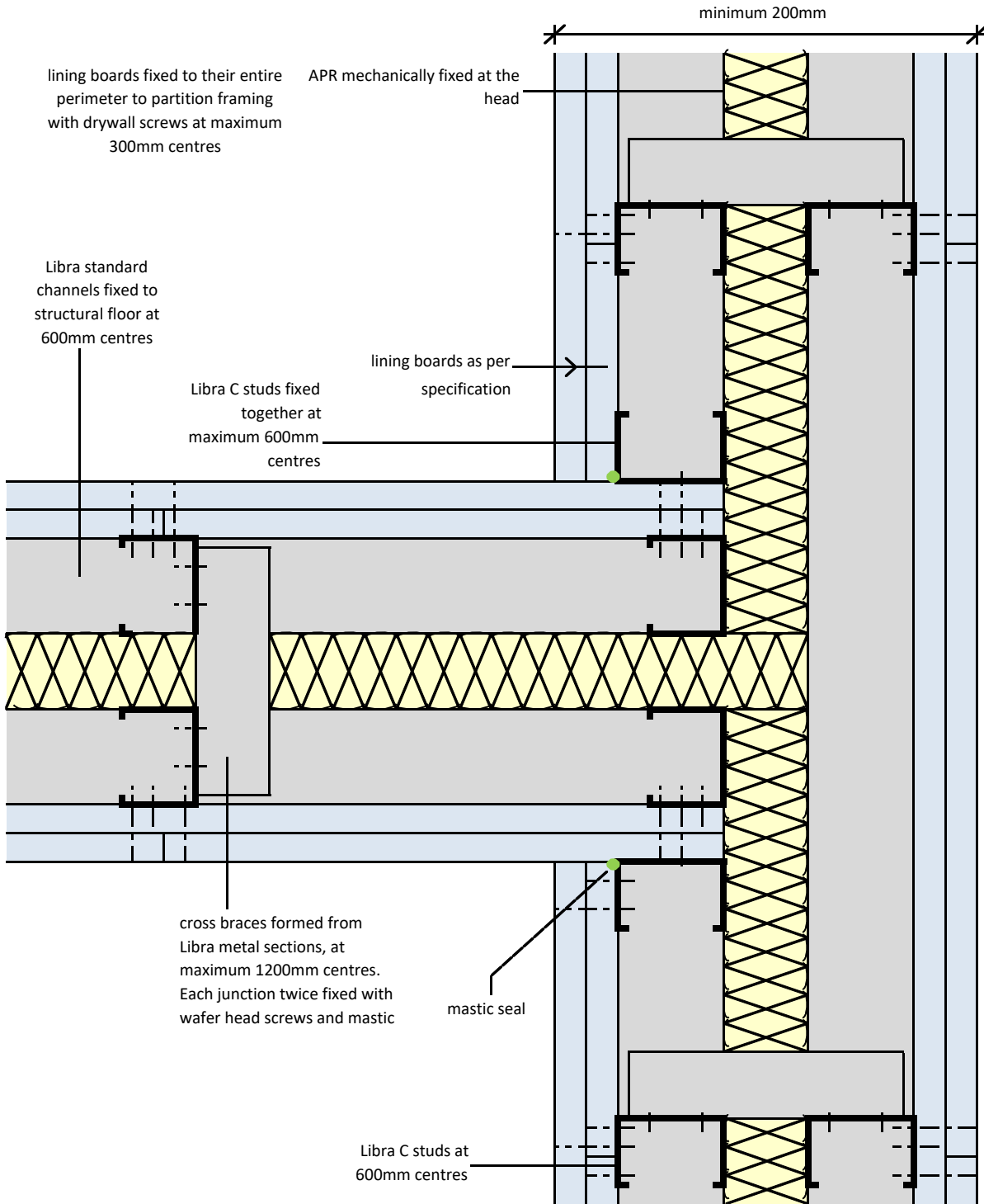
project:	Typical Detail	
----------	----------------	--

initials:	ML
-----------	----

date:	21/5/2017
-------	-----------

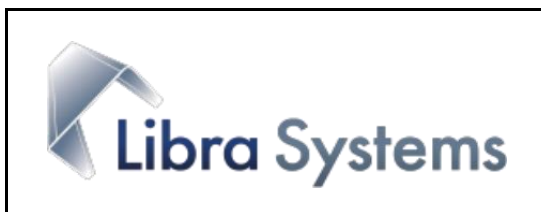
drg no:	ML/TYP/064
---------	------------

twinwall partition  
T junction



Notes: This drawing should be read in conjunction with the relevant sections of the manufacturers current product literature we would draw your attention to the Construction (Design and Management) Regulations 1994 and the Approved Code of Practice which detail the legal duties of clients, client's agents designers and contractors involved in construction projects.

for discussion purposes only / do not scale



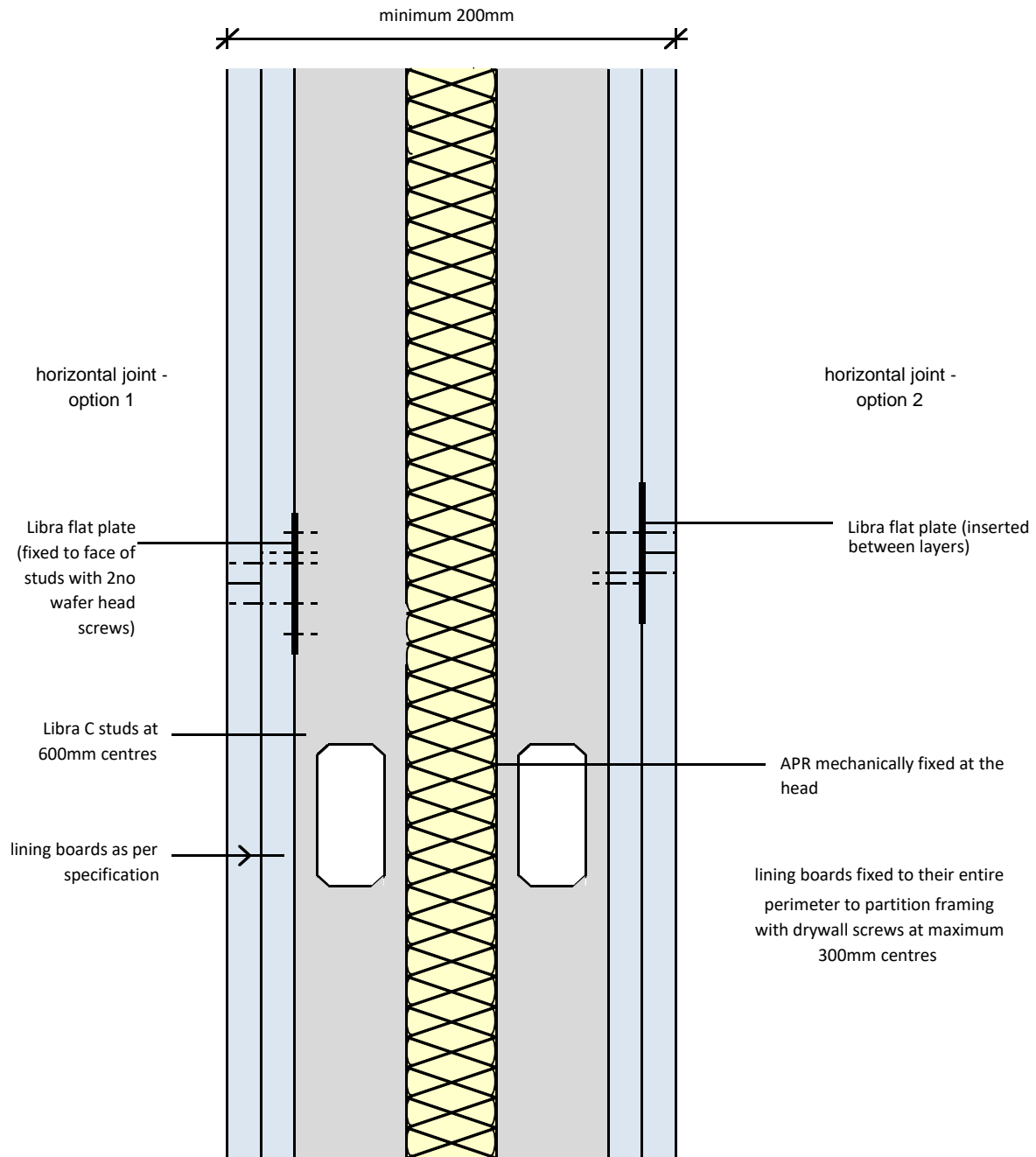
project:	Typical Detail	
----------	----------------	--

initials:	ML
-----------	----

date:	21/5/2017
-------	-----------

drg no:	ML/TYP/065
---------	------------

twinwall partition  
horizontal joint - options 1 & 2



Notes: This drawing should be read in conjunction with the relevant sections of the manufacturers current product literature we would draw your attention to the Construction (Design and Management) Regulations 1994 and the Approved Code of Practice which detail the legal duties of clients, client's agents designers and contractors involved in construction projects.

for discussion purposes only / do not scale



project:  
Typical Detail

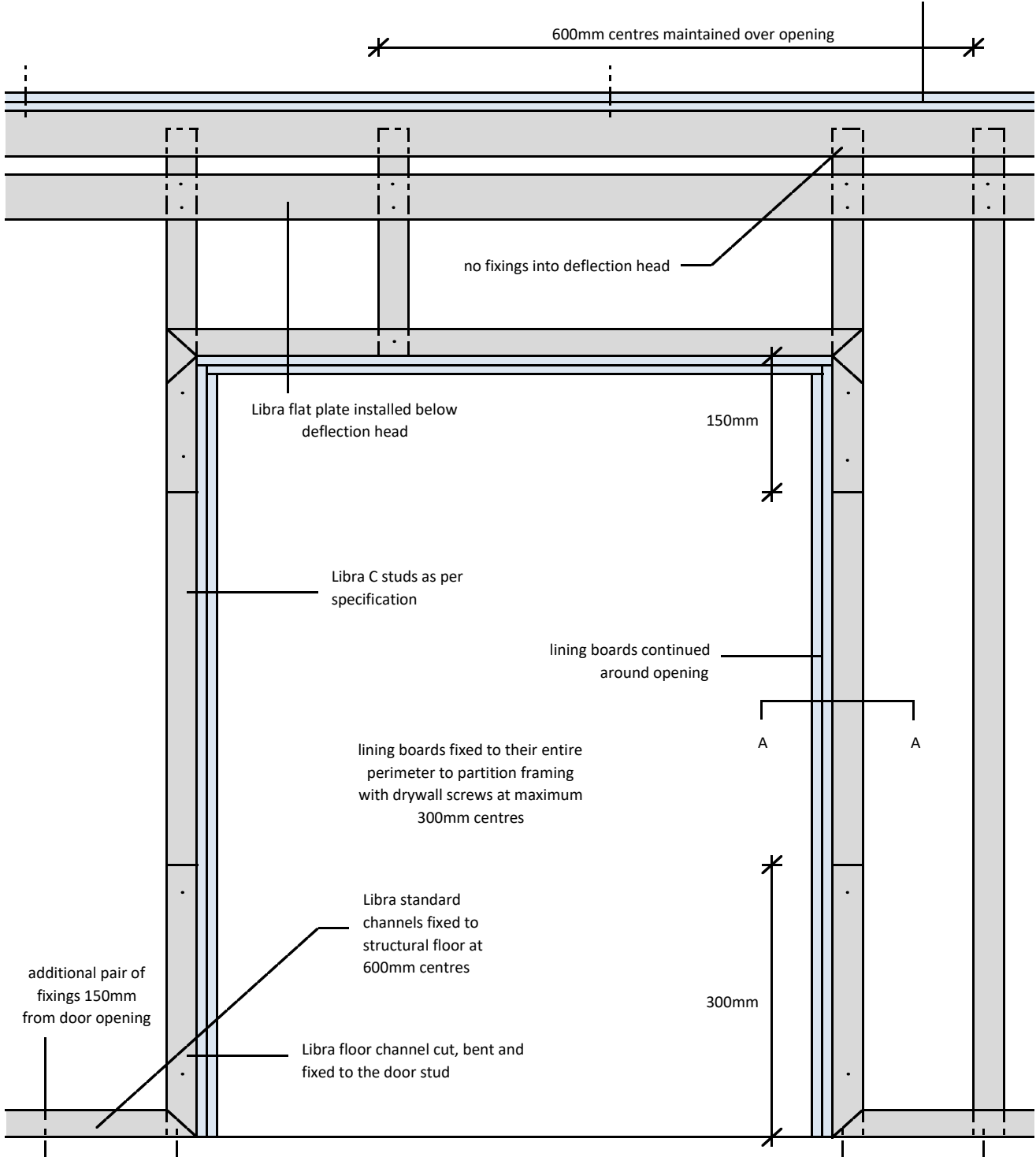
initials:  
ML

date:  
21/5/2017

drg no:  
ML/TYP/066

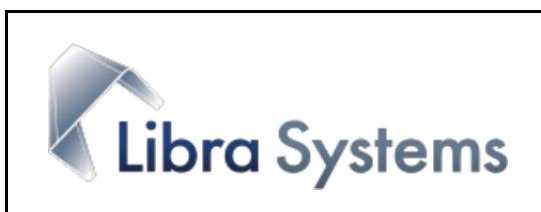
twinwall partition  
heavy / severe door opening - elevation

deflection head detail fixed to soffit at  
600mm centres



Notes: This drawing should be read in conjunction with the relevant sections of the manufacturers current product literature we would draw your attention to the Construction (Design and Management) Regulations 1994 and the Approved Code of Practice which detail the legal duties of clients, client's agents designers and contractors involved in construction projects.

for discussion purposes only / do not scale



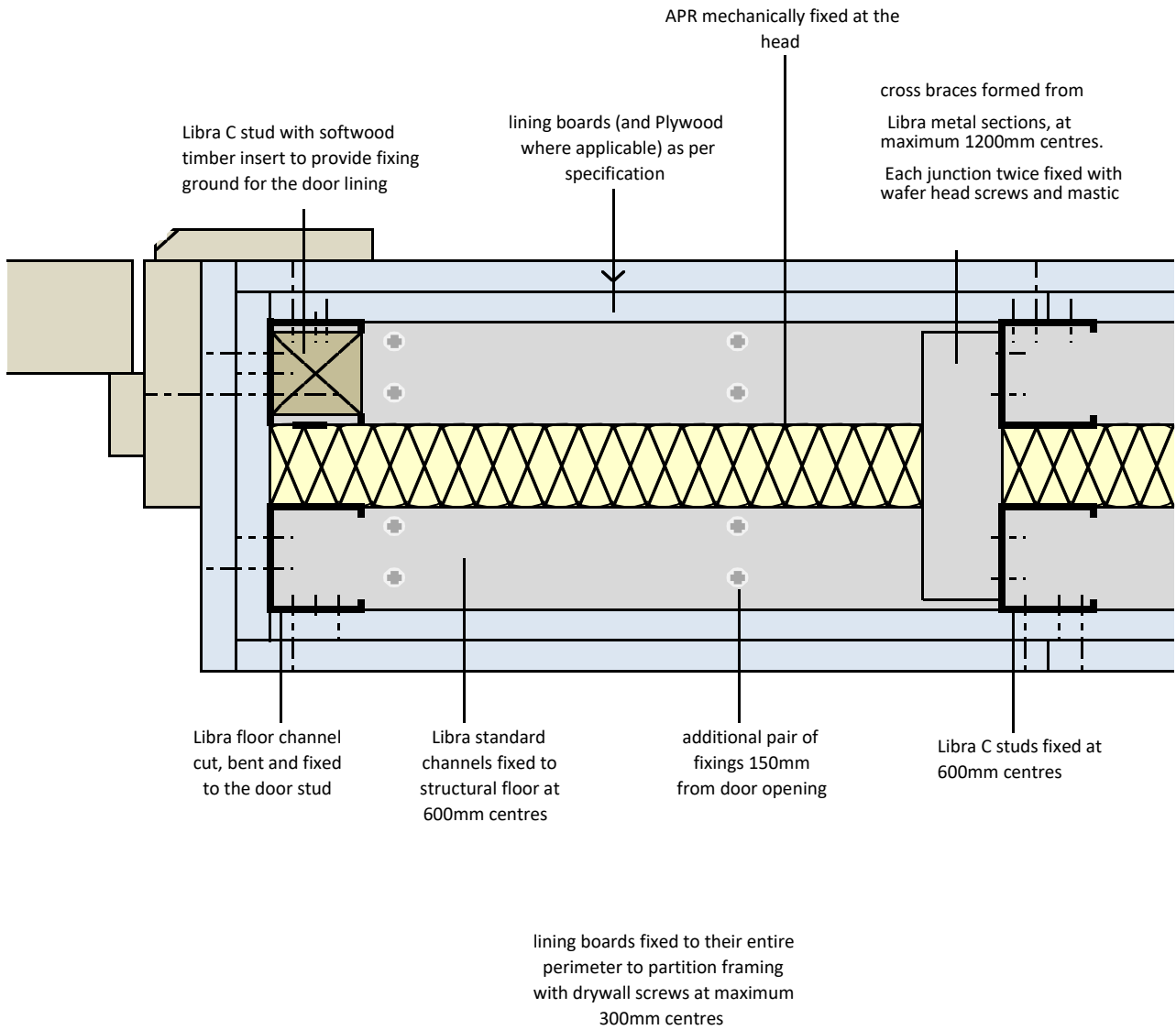
project: **Typical Detail**

initials: **DR**

date: **21/5/2017**

drg no: **ML/TYP/067**

twinwall partition  
heavy / severe door opening - section AA



Notes: This drawing should be read in conjunction with the relevant sections of the manufacturers current product literature we would draw your attention to the Construction (Design and Management) Regulations 1994 and the Approved Code of Practice which detail the legal duties of clients, client's agents designers and contractors involved in construction projects.

for discussion purposes only / do not scale



project: Typical Detail		
initials: ML	date: 21/5/2017	drg no: ML/TYP/068

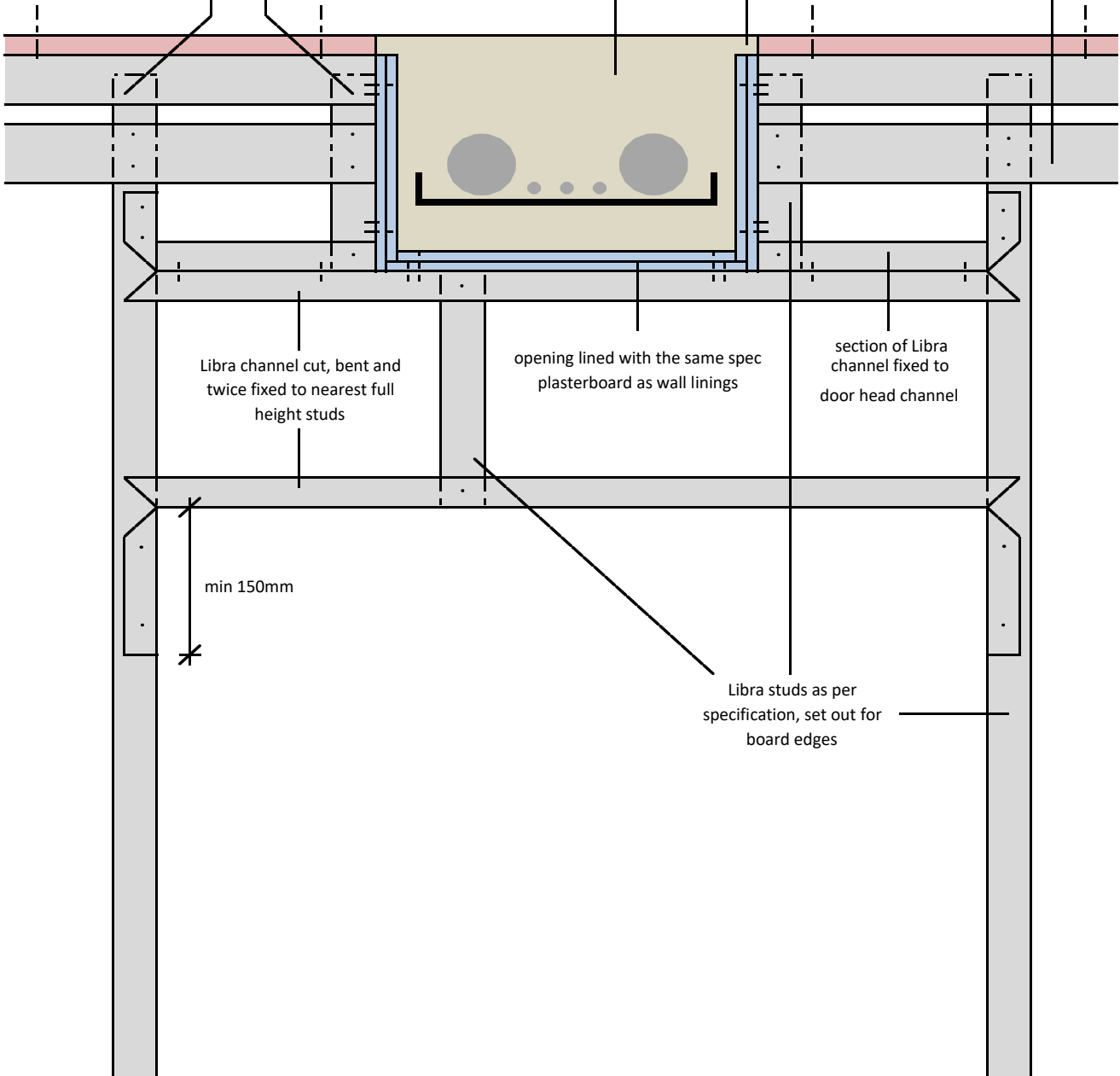
unbraced twinwall partition  
letterbox opening over door head

mineral wool fire batt

Libra flat plate  
twice fixed to each  
stud

no fixings or  
crimps to  
deflection head  
channel

ensure all gaps are sealed to  
prevent the passage of hot gasses



Notes: This drawing should be read in conjunction with the relevant sections of the manufacturers current product literature we would draw your attention to the Construction (Design and Management) Regulations 1994 and the Approved Code of Practice which detail the legal duties of clients, client's agents designers and contractors involved in construction projects.

for discussion purposes only / do not scale



project:  
Typical Details

initials:  
ML

date:  
21/5/2017

drg no:  
ML/TYP/069